

Product datasheet for CF808660

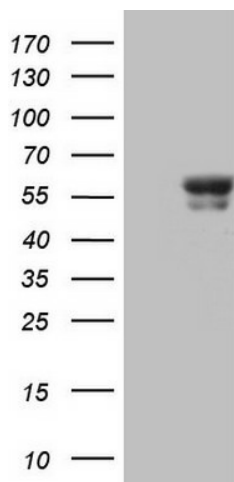
BTBD3 Mouse Monoclonal Antibody [Clone ID: OT1A10]

Product data:

Product Type:	Primary Antibodies
Clone Name:	OT1A10
Applications:	WB
Recommended Dilution:	WB 1:2000
Reactivity:	Human, Mouse, Rat
Host:	Mouse
Isotype:	IgG1
Clonality:	Monoclonal
Immunogen:	Full length human recombinant protein of human BTBD3 (NP_852108) produced in E.coli.
Formulation:	Lyophilized powder (original buffer 1X PBS, pH 7.3, 8% trehalose)
Reconstitution Method:	For reconstitution, we recommend adding 100uL distilled water to a final antibody concentration of about 1 mg/mL. To use this carrier-free antibody for conjugation experiment, we strongly recommend performing another round of desalting process. (OriGene recommends Zeba Spin Desalting Columns, 7KMWCO from Thermo Scientific)
Purification:	Purified from mouse ascites fluids or tissue culture supernatant by affinity chromatography (protein A/G)
Conjugation:	Unconjugated
Storage:	Store at -20°C as received.
Stability:	Stable for 12 months from date of receipt.
Gene Name:	BTB domain containing 3
Database Link:	NP_852108 Entrez Gene 228662 Mouse Entrez Gene 311462 Rat Entrez Gene 22903 Human Q9Y2F9
Background:	Acts as a key regulator of dendritic field orientation during development of sensory cortex. Also directs dendrites toward active axon terminals when ectopically expressed. [UniProtKB/Swiss-Prot Function]
Synonyms:	dj742j24.1


[View online »](#)

Product images:



HEK293T cells were transfected with the pCMV6-ENTRY control (Cat# [PS100001], Left lane) or pCMV6-ENTRY BTBD3 (Cat# [RC223754], Right lane) cDNA for 48 hrs and lysed. Equivalent amounts of cell lysates (5 ug per lane) were separated by SDS-PAGE and immunoblotted with anti-BTBD3 (Cat# [TA808660])(1:2000). Positive lysates [LY405759] (100ug) and [LC405759] (20ug) can be purchased separately from OriGene.