

## Product datasheet for **CF808598**

### Endothelin 3 (EDN3) Mouse Monoclonal Antibody [Clone ID: OTI3E10]

#### Product data:

Product Type:	Primary Antibodies
Clone Name:	OTI3E10
Applications:	IHC
Recommended Dilution:	IHC 1:150
Reactivity:	Human
Host:	Mouse
Isotype:	IgG1
Clonality:	Monoclonal
Immunogen:	Human recombinant protein fragment corresponding to amino acids 17-238 of human EDN3(NP_000105) produced in E.coli.
Formulation:	Lyophilized powder (original buffer 1X PBS, pH 7.3, 8% trehalose)
Reconstitution Method:	For reconstitution, we recommend adding 100uL distilled water to a final antibody concentration of about 1 mg/mL. To use this carrier-free antibody for conjugation experiment, we strongly recommend performing another round of desalting process. (OriGene recommends Zeba Spin Desalting Columns, 7KMWCO from Thermo Scientific)
Purification:	Purified from mouse ascites fluids or tissue culture supernatant by affinity chromatography (protein A/G)
Storage:	Store at -20°C as received.
Stability:	Stable for 12 months from date of receipt.
Predicted Protein Size:	22.8 kDa
Gene Name:	Homo sapiens endothelin 3 (EDN3), transcript variant 1
Database Link:	<a href="#">NP_000105 Entrez Gene 1908 Human</a>



[View online »](#)

**Background:**

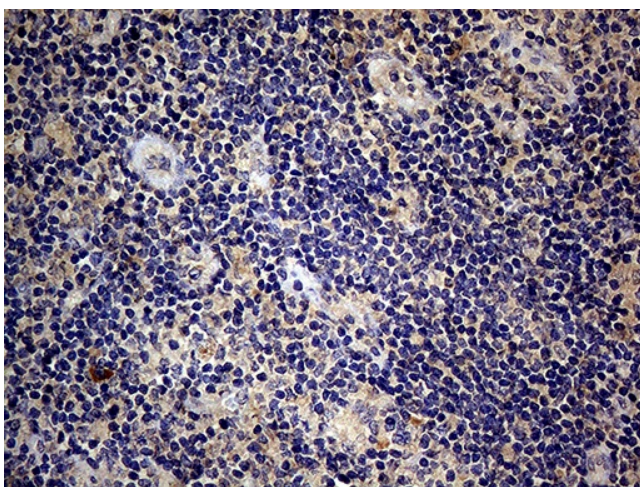
The protein encoded by this gene is a member of the endothelin family. Endothelins are endothelium-derived vasoactive peptides involved in a variety of biological functions. The active form of this protein is a 21 amino acid peptide processed from the precursor protein. The active peptide is a ligand for endothelin receptor type B (EDNRB). The interaction of this endothelin with EDNRB is essential for development of neural crest-derived cell lineages, such as melanocytes and enteric neurons. Mutations in this gene and EDNRB have been associated with Hirschsprung disease (HSCR) and Waardenburg syndrome (WS), which are congenital disorders involving neural crest-derived cells. Four alternatively spliced transcript variants encoding three distinct isoforms have been observed. [provided by RefSeq, Jul 2008]

**Synonyms:**

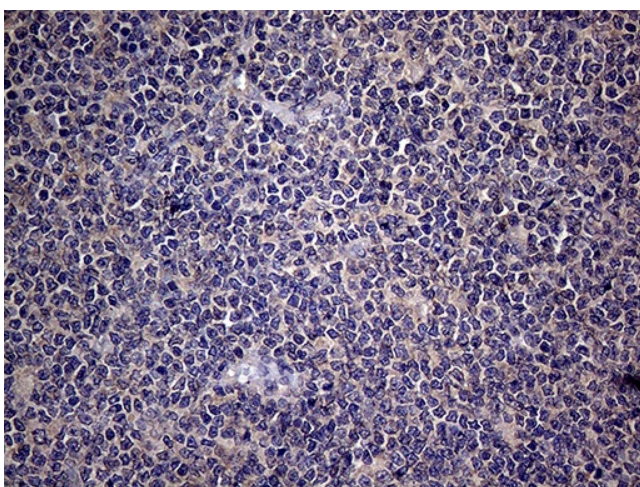
ET-3; ET3; HSCR4; PPET3; WS4B

**Protein Families:**

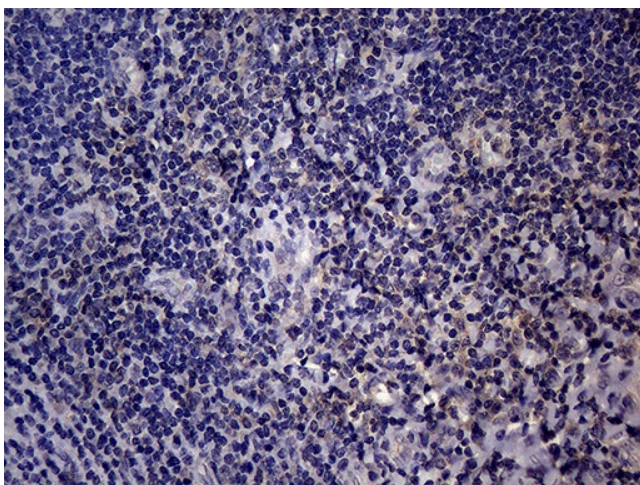
Druggable Genome, Secreted Protein

**Product images:**

Immunohistochemical staining of paraffin-embedded Carcinoma of Human lung tissue using anti-EDN3 mouse monoclonal antibody. (Heat-induced epitope retrieval by 1mM EDTA in 10mM Tris buffer (pH8.5) at 120°C for 3min, [TA808598]) (1:150)



Immunohistochemical staining of paraffin-embedded Human lymphoma tissue using anti-EDN3 mouse monoclonal antibody. (Heat-induced epitope retrieval by 1mM EDTA in 10mM Tris buffer (pH8.5) at 120°C for 3min, [TA808598]) (1:150)



Immunohistochemical staining of paraffin-embedded Human tonsil within the normal limits using anti-EDN3 mouse monoclonal antibody. (Heat-induced epitope retrieval by 1mM EDTA in 10mM Tris buffer (pH8.5) at 120°C for 3min, [TA808598]) (1:150)