

## Product datasheet for **CF808590**

### Amelotin (AMTN) Mouse Monoclonal Antibody [Clone ID: OT11H5]

#### Product data:

Product Type:	Primary Antibodies
Clone Name:	OT11H5
Applications:	WB
Recommended Dilution:	WB 1:2000
Reactivity:	Human
Host:	Mouse
Isotype:	IgG1
Clonality:	Monoclonal
Immunogen:	Full length human recombinant protein of human AMTN (NP_997722) produced in E.coli.
Formulation:	Lyophilized powder (original buffer 1X PBS, pH 7.3, 8% trehalose)
Reconstitution Method:	For reconstitution, we recommend adding 100uL distilled water to a final antibody concentration of about 1 mg/mL. To use this carrier-free antibody for conjugation experiment, we strongly recommend performing another round of desalting process. (OriGene recommends Zeba Spin Desalting Columns, 7KMWCO from Thermo Scientific)
Purification:	Purified from mouse ascites fluids or tissue culture supernatant by affinity chromatography (protein A/G)
Conjugation:	Unconjugated
Storage:	Store at -20°C as received.
Stability:	Stable for 12 months from date of receipt.
Predicted Protein Size:	21.4 kDa
Gene Name:	amelotin
Database Link:	<a href="#">NP_997722</a> <a href="#">Entrez Gene 401138 Human</a> <a href="#">Q6UX39</a>



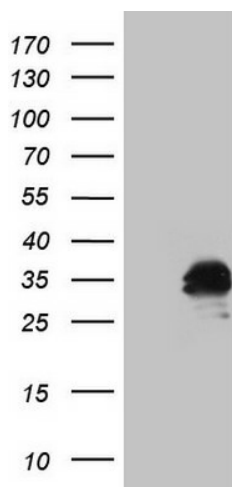
[View online »](#)

**Background:**

The mineralized portions of teeth, the dentin and enamel, are formed by mesenchyme-derived odontoblasts and epithelium-derived ameloblasts, respectively. As ameloblasts differentiate, they deposit specific proteins necessary for enamel formation, including amelogenin (AMELX; MIM 300391), enamelin (ENAM; MIM 606585), and ameloblastin (AMBN; MIM 601259), in the organic enamel matrix. Amelotin is specifically expressed in maturation-stage ameloblasts (Iwasaki et al., 2005 [PubMed 16304441]). [supplied by OMIM, Mar 2008]. Transcript Variant: This variant (2) uses an alternate in-frame splice junction at the 5' end of an exon compared to variant 1. The resulting isoform (2) has the same N- and C-termini but is 1 aa shorter compared to isoform 1. ##Evidence-Data-START## Transcript exon combination :: BC121812.1 [ECO:0000332] ##Evidence-Data-END## COMPLETENESS: complete on the 3' end.

**Synonyms:**

UNQ689

**Product images:**

HEK293T cells were transfected with the pCMV6-ENTRY control (Left lane) or pCMV6-ENTRY AMTN ([RC221473], Right lane) cDNA for 48 hrs and lysed. Equivalent amounts of cell lysates (5 ug per lane) were separated by SDS-PAGE and immunoblotted with anti-AMTN (1:2000). Positive lysates [LY403899] (100ug) and [LC403899] (20ug) can be purchased separately from OriGene.