

Product datasheet for **CF808582**

DLX4 Mouse Monoclonal Antibody [Clone ID: OTI7H10]

Product data:

Product Type:	Primary Antibodies
Clone Name:	OTI7H10
Applications:	WB
Recommended Dilution:	WB 1:2000
Reactivity:	Human
Host:	Mouse
Isotype:	IgG1
Clonality:	Monoclonal
Immunogen:	Full length human recombinant protein of human DLX4(NP_612138) produced in E.coli.
Formulation:	Lyophilized powder (original buffer 1X PBS, pH 7.3, 8% trehalose)
Reconstitution Method:	For reconstitution, we recommend adding 100uL distilled water to a final antibody concentration of about 1 mg/mL. To use this carrier-free antibody for conjugation experiment, we strongly recommend performing another round of desalting process. (OriGene recommends Zeba Spin Desalting Columns, 7KMWCO from Thermo Scientific)
Purification:	Purified from mouse ascites fluids or tissue culture supernatant by affinity chromatography (protein A/G)
Conjugation:	Unconjugated
Storage:	Store at -20°C as received.
Stability:	Stable for 12 months from date of receipt.
Predicted Protein Size:	26.1 kDa
Gene Name:	distal-less homeobox 4
Database Link:	NP_612138 Entrez Gene 1748 Human Q92988



[View online »](#)

Background:

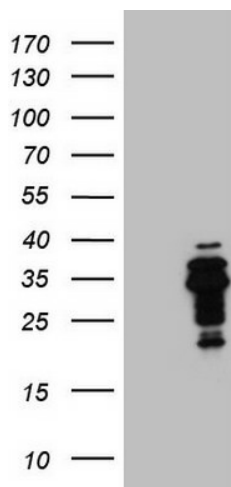
Many vertebrate homeo box-containing genes have been identified on the basis of their sequence similarity with *Drosophila* developmental genes. Members of the *Dlx* gene family contain a homeobox that is related to that of *Distal-less* (*Dll*), a gene expressed in the head and limbs of the developing fruit fly. The *Distal-less* (*Dlx*) family of genes comprises at least 6 different members, *DLX1-DLX6*. The *DLX* proteins are postulated to play a role in forebrain and craniofacial development. Three transcript variants have been described for this gene, however, the full length nature of one variant has not been described. Studies of the two splice variants revealed that one encoded isoform functions as a repressor of the beta-globin gene while the other isoform lacks that function. [provided by RefSeq, Jul 2008]

Synonyms:

BP1; DLX7; DLX8; DLX9; OFC15

Protein Families:

Transcription Factors

Product images:

HEK293T cells were transfected with the pCMV6-ENTRY control (Left lane) or pCMV6-ENTRY DLX4 ([RC202187], Right lane) cDNA for 48 hrs and lysed. Equivalent amounts of cell lysates (5 ug per lane) were separated by SDS-PAGE and immunoblotted with anti-DLX4 (1:2000). Positive lysates [LY403346] (100ug) and [LC403346] (20ug) can be purchased separately from OriGene.