

Product datasheet for **CF808575**

MCEE Mouse Monoclonal Antibody [Clone ID: OTI13B9]

Product data:

Product Type:	Primary Antibodies
Clone Name:	OTI13B9
Applications:	WB
Recommended Dilution:	WB 1:500
Reactivity:	Human
Host:	Mouse
Isotype:	IgG2a
Clonality:	Monoclonal
Immunogen:	Full length human recombinant protein of human MCEE (NP_115990) produced in E.coli.
Formulation:	Lyophilized powder (original buffer 1X PBS, pH 7.3, 8% trehalose)
Reconstitution Method:	For reconstitution, we recommend adding 100uL distilled water to a final antibody concentration of about 1 mg/mL. To use this carrier-free antibody for conjugation experiment, we strongly recommend performing another round of desalting process. (OriGene recommends Zeba Spin Desalting Columns, 7KMWCO from Thermo Scientific)
Purification:	Purified from mouse ascites fluids or tissue culture supernatant by affinity chromatography (protein A/G)
Conjugation:	Unconjugated
Storage:	Store at -20°C as received.
Stability:	Stable for 12 months from date of receipt.
Predicted Protein Size:	18.6 kDa
Gene Name:	methylmalonyl-CoA epimerase
Database Link:	NP_115990 Entrez Gene 84693 Human Q96PE7
Background:	The product of this gene catalyzes the interconversion of D- and L-methylmalonyl-CoA during the degradation of branched chain amino acids, odd chain-length fatty acids, and other metabolites. Mutations in this gene result in methylmalonyl-CoA epimerase deficiency, which is presented as mild to moderate methylmalonic aciduria. [provided by RefSeq, Jul 2008]

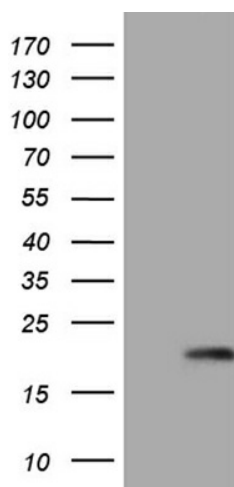


[View online »](#)

Synonyms: GLOD2

Protein Pathways: Metabolic pathways, Propanoate metabolism, Valine, leucine and isoleucine degradation

Product images:



HEK293T cells were transfected with the pCMV6-ENTRY control (Left lane) or pCMV6-ENTRY MCEE ([RC205018], Right lane) cDNA for 48 hrs and lysed. Equivalent amounts of cell lysates (5 ug per lane) were separated by SDS-PAGE and immunoblotted with anti-MCEE (1:500). Positive lysates [LY403176] (100ug) and [LC403176] (20ug) can be purchased separately from OriGene.