

Product datasheet for **CF808574**

Amelotin (AMTN) Mouse Monoclonal Antibody [Clone ID: OTI1D6]

Product data:

| | |
|-------------------------|--|
| Product Type: | Primary Antibodies |
| Clone Name: | OTI1D6 |
| Applications: | IHC, WB |
| Recommended Dilution: | WB 1:2000, IHC 1:150 |
| Reactivity: | Human |
| Host: | Mouse |
| Isotype: | IgG2b |
| Clonality: | Monoclonal |
| Immunogen: | Full length human recombinant protein of human AMTN (NP_997722) produced in E.coli. |
| Formulation: | Lyophilized powder (original buffer 1X PBS, pH 7.3, 8% trehalose) |
| Reconstitution Method: | For reconstitution, we recommend adding 100uL distilled water to a final antibody concentration of about 1 mg/mL. To use this carrier-free antibody for conjugation experiment, we strongly recommend performing another round of desalting process. (OriGene recommends Zeba Spin Desalting Columns, 7KMWCO from Thermo Scientific) |
| Purification: | Purified from mouse ascites fluids or tissue culture supernatant by affinity chromatography (protein A/G) |
| Conjugation: | Unconjugated |
| Storage: | Store at -20°C as received. |
| Stability: | Stable for 12 months from date of receipt. |
| Predicted Protein Size: | 21.4 kDa |
| Gene Name: | amelotin |
| Database Link: | NP_997722 Entrez Gene 401138 Human Q6UX39 |



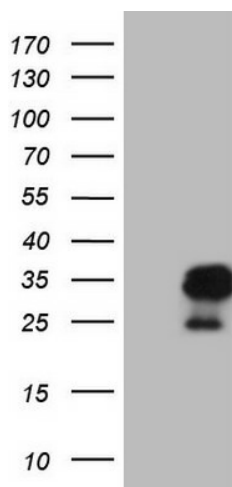
[View online »](#)

Background:

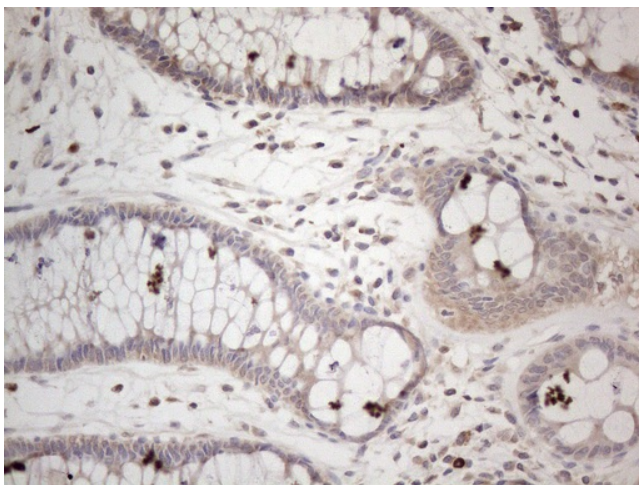
The mineralized portions of teeth, the dentin and enamel, are formed by mesenchyme-derived odontoblasts and epithelium-derived ameloblasts, respectively. As ameloblasts differentiate, they deposit specific proteins necessary for enamel formation, including amelogenin (AMELX; MIM 300391), enamelin (ENAM; MIM 606585), and ameloblastin (AMBN; MIM 601259), in the organic enamel matrix. Amelotin is specifically expressed in maturation-stage ameloblasts (Iwasaki et al., 2005 [PubMed 16304441]). [supplied by OMIM, Mar 2008]. Transcript Variant: This variant (2) uses an alternate in-frame splice junction at the 5' end of an exon compared to variant 1. The resulting isoform (2) has the same N- and C-termini but is 1 aa shorter compared to isoform 1. ##Evidence-Data-START## Transcript exon combination :: BC121812.1 [ECO:0000332] ##Evidence-Data-END## COMPLETENESS: complete on the 3' end.

Synonyms:

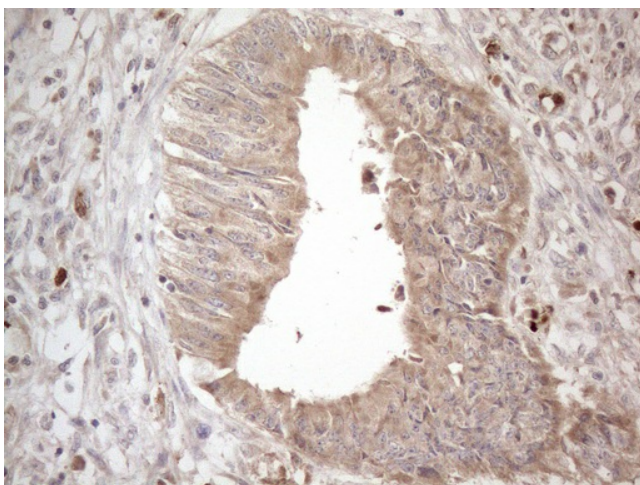
UNQ689

Product images:

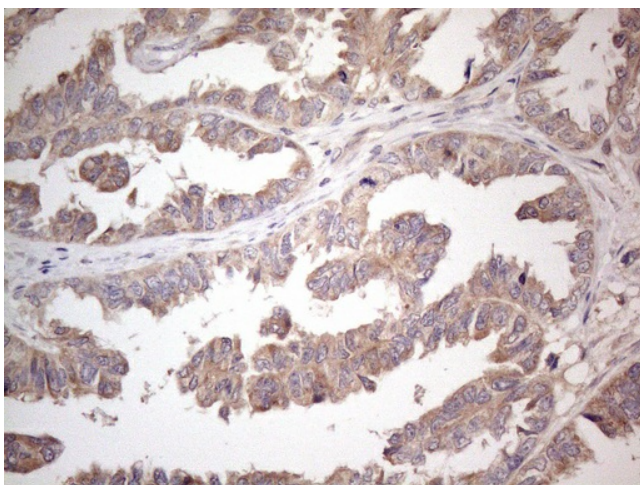
HEK293T cells were transfected with the pCMV6-ENTRY control (Left lane) or pCMV6-ENTRY AMTN ([RC221473], Right lane) cDNA for 48 hrs and lysed. Equivalent amounts of cell lysates (5 ug per lane) were separated by SDS-PAGE and immunoblotted with anti-AMTN (1:2000). Positive lysates [LY403899] (100ug) and [LC403899] (20ug) can be purchased separately from OriGene.



Immunohistochemical staining of paraffin-embedded Human colon tissue within the normal limits using anti-AMTN mouse monoclonal antibody. Heat-induced epitope retrieval by EDTA solution buffer pH 8.0 at 120°C for 3 min.



Immunohistochemical staining of paraffin-embedded Adenocarcinoma of Human colon tissue using anti-AMTN mouse monoclonal antibody. Heat-induced epitope retrieval by EDTA solution buffer pH 8.0 at 120°C for 3 min.



Immunohistochemical staining of paraffin-embedded Adenocarcinoma of Human ovary tissue using anti-AMTN mouse monoclonal antibody. Heat-induced epitope retrieval by EDTA solution buffer pH 8.0 at 120°C for 3 min.