

Product datasheet for **CF808548**

NAP1L3 Mouse Monoclonal Antibody [Clone ID: OTI2C3]

Product data:

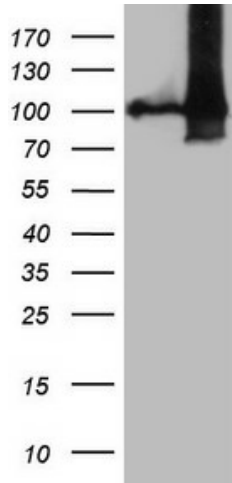
Product Type:	Primary Antibodies
Clone Name:	OTI2C3
Applications:	WB
Recommended Dilution:	WB 1:2000
Reactivity:	Human
Host:	Mouse
Isotype:	IgG1
Clonality:	Monoclonal
Immunogen:	Human recombinant protein fragment corresponding to amino acids 1-315 of human NAP1L3(NP_004529) produced in E.coli.
Formulation:	Lyophilized powder (original buffer 1X PBS, pH 7.3, 8% trehalose)
Reconstitution Method:	For reconstitution, we recommend adding 100uL distilled water to a final antibody concentration of about 1 mg/mL. To use this carrier-free antibody for conjugation experiment, we strongly recommend performing another round of desalting process. (OriGene recommends Zeba Spin Desalting Columns, 7KMWCO from Thermo Scientific)
Purification:	Purified from mouse ascites fluids or tissue culture supernatant by affinity chromatography (protein A/G)
Conjugation:	Unconjugated
Storage:	Store at -20°C as received.
Stability:	Stable for 12 months from date of receipt.
Predicted Protein Size:	57.4 kDa
Gene Name:	nucleosome assembly protein 1 like 3
Database Link:	NP_004529 Entrez Gene 4675 Human Q99457
Background:	This gene is intronless and encodes a member of the nucleosome assembly protein (NAP) family. This gene is linked closely to a region of genes responsible for several X-linked mental retardation syndromes. [provided by RefSeq, Dec 2010]



[View online »](#)

Synonyms: MB20; NPL3

Product images:



HEK293T cells were transfected with the pCMV6-ENTRY control (Left lane) or pCMV6-ENTRY NAP1L3 ([RC205297], Right lane) cDNA for 48 hrs and lysed. Equivalent amounts of cell lysates (5 ug per lane) were separated by SDS-PAGE and immunoblotted with anti-NAP1L3 (1:2000). Positive lysates [LY417930] (100ug) and [LC417930] (20ug) can be purchased separately from OriGene.