

Product datasheet for **CF808541**

SPCS2 Mouse Monoclonal Antibody [Clone ID: OT11E4]

Product data:

Product Type:	Primary Antibodies
Clone Name:	OT11E4
Applications:	WB
Recommended Dilution:	WB 1:2000
Reactivity:	Human, Mouse, Rat
Host:	Mouse
Isotype:	IgG2a
Clonality:	Monoclonal
Immunogen:	Human recombinant protein fragment corresponding to amino acids 2-64 of human SPCS2(NP_055567) produced in E.coli.
Formulation:	Lyophilized powder (original buffer 1X PBS, pH 7.3, 8% trehalose)
Reconstitution Method:	For reconstitution, we recommend adding 100uL distilled water to a final antibody concentration of about 1 mg/mL. To use this carrier-free antibody for conjugation experiment, we strongly recommend performing another round of desalting process. (OriGene recommends Zeba Spin Desalting Columns, 7KMWCO from Thermo Scientific)
Purification:	Purified from mouse ascites fluids or tissue culture supernatant by affinity chromatography (protein A/G)
Conjugation:	Unconjugated
Storage:	Store at -20°C as received.
Stability:	Stable for 12 months from date of receipt.
Predicted Protein Size:	24.8 kDa
Gene Name:	signal peptidase complex subunit 2
Database Link:	NP_055567 Entrez Gene 66624 Mouse Entrez Gene 293142 Rat Entrez Gene 9789 Human Q15005
Background:	Component of the microsomal signal peptidase complex which removes signal peptides from nascent proteins as they are translocated into the lumen of the endoplasmic reticulum. [UniProtKB/Swiss-Prot Function]

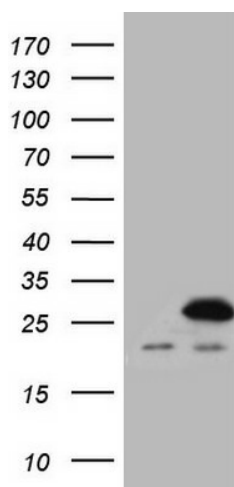


[View online »](#)

Synonyms: KIAA0102; MGC117366

Protein Families: Protease, Transmembrane

Product images:



HEK293T cells were transfected with the pCMV6-ENTRY control (Cat# [PS100001], Left lane) or pCMV6-ENTRY SPCS2 (Cat# [RC210745], Right lane) cDNA for 48 hrs and lysed. Equivalent amounts of cell lysates (5 ug per lane) were separated by SDS-PAGE and immunoblotted with anti-SPCS2 (Cat# [TA808541])(1:2000). Positive lysates [LY415050] (100ug) and [LC415050] (20ug) can be purchased separately from OriGene.