

## Product datasheet for **CF808513**

### EXOSC1 Mouse Monoclonal Antibody [Clone ID: OTI1H8]

#### Product data:

Product Type:	Primary Antibodies
Clone Name:	OTI1H8
Applications:	WB
Recommended Dilution:	WB 1:2000
Reactivity:	Human, Mouse, Rat
Host:	Mouse
Isotype:	IgG1
Clonality:	Monoclonal
Immunogen:	Full length human recombinant protein of human EXOSC1 (NP_057130) produced in E.coli.
Formulation:	Lyophilized powder (original buffer 1X PBS, pH 7.3, 8% trehalose)
Reconstitution Method:	For reconstitution, we recommend adding 100uL distilled water to a final antibody concentration of about 1 mg/mL. To use this carrier-free antibody for conjugation experiment, we strongly recommend performing another round of desalting process. (OriGene recommends Zeba Spin Desalting Columns, 7KMWCO from Thermo Scientific)
Purification:	Purified from mouse ascites fluids or tissue culture supernatant by affinity chromatography (protein A/G)
Conjugation:	Unconjugated
Storage:	Store at -20°C as received.
Stability:	Stable for 12 months from date of receipt.
Predicted Protein Size:	21.3 kDa
Gene Name:	exosome component 1
Database Link:	<a href="#">NP_057130</a> <a href="#">Entrez Gene 51013 Human</a> <a href="#">Q9Y3B2</a>



[View online »](#)

**Background:**

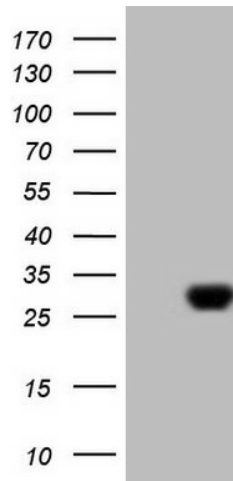
This gene encodes a core component of the exosome. The mammalian exosome is required for rapid degradation of AU rich element-containing RNAs but not for poly(A) shortening. The association of this protein with the exosome is mediated by protein-protein interactions with ribosomal RNA-processing protein 42 and ribosomal RNA-processing protein 46. [provided by RefSeq, Jul 2008]

**Synonyms:**

CGI-108; CSL4; Csl4p; hCsl4p; p13; SKI4; Ski4p

**Protein Pathways:**

RNA degradation

**Product images:**

HEK293T cells were transfected with the pCMV6-ENTRY control (Left lane) or pCMV6-ENTRY EXOSC1 ([RC206007], Right lane) cDNA for 48 hrs and lysed. Equivalent amounts of cell lysates (5 ug per lane) were separated by SDS-PAGE and immunoblotted with anti-EXOSC1 (1:2000). Positive lysates [LY414227] (100ug) and [LC414227] (20ug) can be purchased separately from OriGene.