

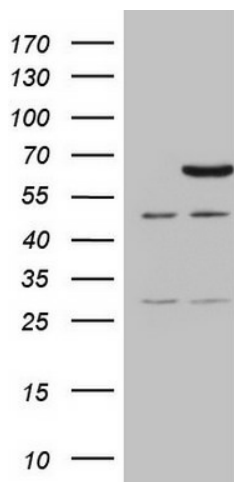
## Product datasheet for CF808462

### IHO1 Mouse Monoclonal Antibody [Clone ID: OT11H3]

#### Product data:

Product Type:	Primary Antibodies
Clone Name:	OT11H3
Applications:	WB
Recommended Dilution:	WB 1:2000
Reactivity:	Human
Host:	Mouse
Isotype:	IgG1
Clonality:	Monoclonal
Immunogen:	Full length human recombinant protein of human CCDC36 (NP_835467) produced in E.coli.
Formulation:	Lyophilized powder (original buffer 1X PBS, pH 7.3, 8% trehalose)
Reconstitution Method:	For reconstitution, we recommend adding 100uL distilled water to a final antibody concentration of about 1 mg/mL. To use this carrier-free antibody for conjugation experiment, we strongly recommend performing another round of desalting process. (OriGene recommends Zeba Spin Desalting Columns, 7KMWCO from Thermo Scientific)
Purification:	Purified from mouse ascites fluids or tissue culture supernatant by affinity chromatography (protein A/G)
Conjugation:	Unconjugated
Storage:	Store at -20°C as received.
Stability:	Stable for 12 months from date of receipt.
Predicted Protein Size:	64.9 kDa
Gene Name:	interactor of HORMAD1 1
Database Link:	<a href="#">NP_835467</a> <a href="#">Entrez Gene 339834 Human</a> <a href="#">Q8IYA8</a>
Synonyms:	CT74

[View online »](#)

**Product images:**


HEK293T cells were transfected with the pCMV6-ENTRY control (Left lane) or pCMV6-ENTRY CCDC36 ([RC206914], Right lane) cDNA for 48 hrs and lysed. Equivalent amounts of cell lysates (5 ug per lane) were separated by SDS-PAGE and immunoblotted with anti-CCDC36 (1:2000). Positive lysates [LY406013] (100ug) and [LC406013] (20ug) can be purchased separately from OriGene.