

Product datasheet for **CF808439**

CDC6 Mouse Monoclonal Antibody [Clone ID: OT11B3]

Product data:

Product Type:	Primary Antibodies
Clone Name:	OT11B3
Applications:	WB
Recommended Dilution:	WB 1:2000
Reactivity:	Human
Host:	Mouse
Isotype:	IgG1
Clonality:	Monoclonal
Immunogen:	Full length human recombinant protein of human CDC6(NP_001245) produced in E.coli.
Formulation:	Lyophilized powder (original buffer 1X PBS, pH 7.3, 8% trehalose)
Reconstitution Method:	For reconstitution, we recommend adding 100uL distilled water to a final antibody concentration of about 1 mg/mL. To use this carrier-free antibody for conjugation experiment, we strongly recommend performing another round of desalting process. (OriGene recommends Zeba Spin Desalting Columns, 7KMWCO from Thermo Scientific)
Purification:	Purified from mouse ascites fluids or tissue culture supernatant by affinity chromatography (protein A/G)
Conjugation:	Unconjugated
Storage:	Store at -20°C as received.
Stability:	Stable for 12 months from date of receipt.
Predicted Protein Size:	62.5 kDa
Gene Name:	cell division cycle 6
Database Link:	NP_001245 Entrez Gene 990 Human Q99741



[View online »](#)

Background:

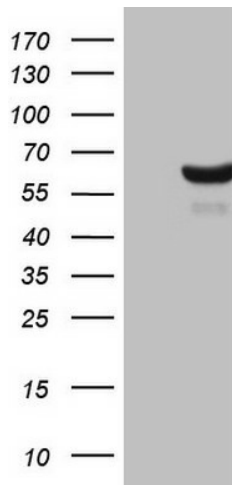
The protein encoded by this gene is highly similar to *Saccharomyces cerevisiae* Cdc6, a protein essential for the initiation of DNA replication. This protein functions as a regulator at the early steps of DNA replication. It localizes in cell nucleus during cell cycle G1, but translocates to the cytoplasm at the start of S phase. The subcellular translocation of this protein during cell cycle is regulated through its phosphorylation by Cdks. Transcription of this protein was reported to be regulated in response to mitogenic signals through transcriptional control mechanism involving E2F proteins. [provided by RefSeq, Jul 2008]

Synonyms:

CDC18L; HsCDC6; HsCDC18

Protein Pathways:

Cell cycle

Product images:

HEK293T cells were transfected with the pCMV6-ENTRY control (Left lane) or pCMV6-ENTRY CDC6 ([RC206814], Right lane) cDNA for 48 hrs and lysed. Equivalent amounts of cell lysates (5 ug per lane) were separated by SDS-PAGE and immunoblotted with anti-CDC6 (1:2000). Positive lysates [LY400502] (100ug) and [LC400502] (20ug) can be purchased separately from OriGene.