

## Product datasheet for **CF808435**

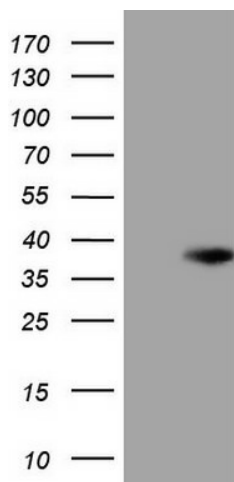
### **XRCC6BP1 (ATP23) Mouse Monoclonal Antibody [Clone ID: OTI3C5]**

#### **Product data:**

|                                |  |
|--------------------------------|--|
| <b>Product Type:</b>           | Primary Antibodies   |
| <b>Clone Name:</b>             | OTI3C5   |
| <b>Applications:</b>           | WB   |
| <b>Recommended Dilution:</b>   | WB 1:500   |
| <b>Reactivity:</b>             | Human  |
| <b>Host:</b>                   | Mouse  |
| <b>Isotype:</b>                | IgG1   |
| <b>Clonality:</b>              | Monoclonal   |
| <b>Immunogen:</b>              | Full length human recombinant protein of human XRCC6BP1 (NP_150592) produced in E.coli.  |
| <b>Formulation:</b>            | Lyophilized powder (original buffer 1X PBS, pH 7.3, 8% trehalose)  |
| <b>Reconstitution Method:</b>  | For reconstitution, we recommend adding 100uL distilled water to a final antibody concentration of about 1 mg/mL. To use this carrier-free antibody for conjugation experiment, we strongly recommend performing another round of desalting process. (OriGene recommends Zeba Spin Desalting Columns, 7KMWCO from Thermo Scientific) |
| <b>Purification:</b>           | Purified from mouse ascites fluids or tissue culture supernatant by affinity chromatography (protein A/G)  |
| <b>Conjugation:</b>            | Unconjugated   |
| <b>Storage:</b>                | Store at -20°C as received.  |
| <b>Stability:</b>              | Stable for 12 months from date of receipt.   |
| <b>Predicted Protein Size:</b> | 27.9 kDa   |
| <b>Gene Name:</b>              | ATP23 metalloproteinase and ATP synthase assembly factor homolog   |
| <b>Database Link:</b>          | <a href="#">NP_150592</a><br><a href="#">Entrez Gene 91419 Human</a><br><a href="#">Q9Y6H3</a>   |
| <b>Synonyms:</b>               | KUB3; XRCC6BP1   |



[View online »](#)

**Product images:**

HEK293T cells were transfected with the pCMV6-ENTRY control (Left lane) or pCMV6-ENTRY XRCC6BP1 ([RC203623], Right lane) cDNA for 48 hrs and lysed. Equivalent amounts of cell lysates (5 ug per lane) were separated by SDS-PAGE and immunoblotted with anti-XRCC6BP1 (1:500). Positive lysates [LY403240] (100ug) and [LC403240] (20ug) can be purchased separately from OriGene.