

Product datasheet for **CF808428**

CAMK2B Mouse Monoclonal Antibody [Clone ID: OTI4B12]

Product data:

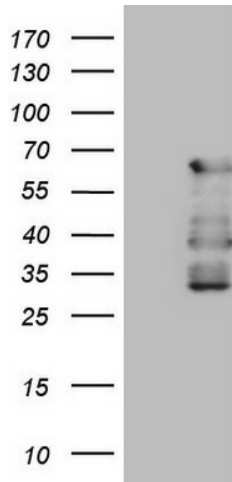
Product Type:	Primary Antibodies
Clone Name:	OTI4B12
Applications:	WB
Recommended Dilution:	WB 1:2000
Reactivity:	Human, Mouse, Rat
Host:	Mouse
Isotype:	IgG1
Clonality:	Monoclonal
Immunogen:	Human recombinant protein fragment corresponding to amino acids 311-385 of human CAMK2B(NP_001211) produced in E.coli.
Formulation:	Lyophilized powder (original buffer 1X PBS, pH 7.3, 8% trehalose)
Reconstitution Method:	For reconstitution, we recommend adding 100uL distilled water to a final antibody concentration of about 1 mg/mL. To use this carrier-free antibody for conjugation experiment, we strongly recommend performing another round of desalting process. (OriGene recommends Zeba Spin Desalting Columns, 7KMWCO from Thermo Scientific)
Purification:	Purified from mouse ascites fluids or tissue culture supernatant by affinity chromatography (protein A/G)
Conjugation:	Unconjugated
Storage:	Store at -20°C as received.
Stability:	Stable for 12 months from date of receipt.
Predicted Protein Size:	72.5 kDa
Gene Name:	calcium/calmodulin dependent protein kinase II beta
Database Link:	NP_001211 Entrez Gene 12323 Mouse Entrez Gene 24245 Rat Entrez Gene 816 Human Q13554
Synonyms:	CAM2; CAMK2; CAMKB
Protein Families:	Druggable Genome, Protein Kinase



[View online »](#)

Protein Pathways:

Calcium signaling pathway, ErbB signaling pathway, Glioma, GnRH signaling pathway, Long-term potentiation, Melanogenesis, Neurotrophin signaling pathway, Olfactory transduction, Oocyte meiosis, Wnt signaling pathway

Product images:

HEK293T cells were transfected with the pCMV6-ENTRY control (Left lane) or pCMV6-ENTRY CAMK2B ([RC215639], Right lane) cDNA for 48 hrs and lysed. Equivalent amounts of cell lysates (5 ug per lane) were separated by SDS-PAGE and immunoblotted with anti-CAMK2B (1:2000). Positive lysates [LY420062] (100ug) and [LC420062] (20ug) can be purchased separately from OriGene.