

Product datasheet for **CF808418**

C3orf43 (SMCO1) Mouse Monoclonal Antibody [Clone ID: OTI1H6]

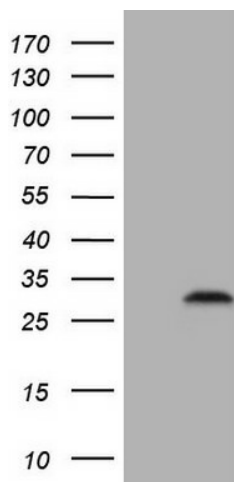
Product data:

| | |
|--------------------------------|---|
| Product Type: | Primary Antibodies |
| Clone Name: | OTI1H6 |
| Applications: | WB |
| Recommend Dilution: | WB 1:2000 |
| Reactivity: | Human |
| Host: | Mouse |
| Isotype: | IgG1 |
| Clonality: | Monoclonal |
| Immunogen: | Full length human recombinant protein of human C3orf43 (NP_001071125) produced in E.coli. |
| Formulation: | PBS (pH7.3), 8% Trehalose |
| Reconstitution Method: | Reconstitute with PBS (pH7.3). To use this carrier-free antibody for conjugation experiment, we strongly recommend you to perform another round of desalting process. (OriGene recommends Zeba Spin Desalting Columns, 7KMWCO from Thermo Scientific) |
| Purification: | Purified from cell culture supernatant by affinity chromatography |
| Predicted Protein Size: | 24.4 kDa |
| Gene Name: | Homo sapiens single-pass membrane protein with coiled-coil domains 1 (SMCO1), transcript variant 1, mRNA. |
| Database Link: | NP_001071125 Entrez Gene 255798 Human |
| Synonyms: | C3orf43 |



[View online »](#)

Product images:



HEK293T cells were transfected with the pCMV6-ENTRY control (Left lane) or pCMV6-ENTRY C3orf43 (RC223719, Right lane) cDNA for 48 hrs and lysed. Equivalent amounts of cell lysates (5 ug per lane) were separated by SDS-PAGE and immunoblotted with anti-C3orf43 (1:2000). Positive lysates LY421471 (100ug) and LC421471 (20ug) can be purchased separately from OriGene.