

## Product datasheet for **CF808409**

### ETFA Mouse Monoclonal Antibody [Clone ID: OTI5C4]

#### Product data:

Product Type:	Primary Antibodies
Clone Name:	OTI5C4
Applications:	WB
Recommended Dilution:	WB 1:2000
Reactivity:	Human, Mouse, Rat
Host:	Mouse
Isotype:	IgG1
Clonality:	Monoclonal
Immunogen:	Full length human recombinant protein of human ETFA (NP_000117) produced in E.coli.
Formulation:	Lyophilized powder (original buffer 1X PBS, pH 7.3, 8% trehalose)
Reconstitution Method:	For reconstitution, we recommend adding 100uL distilled water to a final antibody concentration of about 1 mg/mL. To use this carrier-free antibody for conjugation experiment, we strongly recommend performing another round of desalting process. (OriGene recommends Zeba Spin Desalting Columns, 7KMWCO from Thermo Scientific)
Purification:	Purified from mouse ascites fluids or tissue culture supernatant by affinity chromatography (protein A/G)
Conjugation:	Unconjugated
Storage:	Store at -20°C as received.
Stability:	Stable for 12 months from date of receipt.
Predicted Protein Size:	34.9 kDa
Gene Name:	electron transfer flavoprotein subunit alpha
Database Link:	<a href="#">NP_000117</a> <a href="#">Entrez Gene 110842 Mouse</a> <a href="#">Entrez Gene 300726 Rat</a> <a href="#">Entrez Gene 2108 Human</a> <a href="#">P13804</a>



[View online »](#)

**Background:**

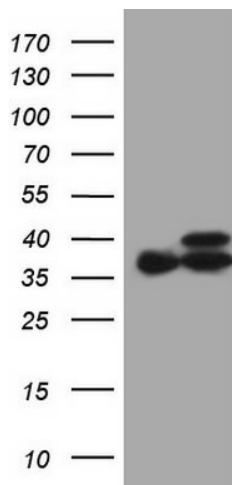
ETFA participates in catalyzing the initial step of the mitochondrial fatty acid beta-oxidation. It shuttles electrons between primary flavoprotein dehydrogenases and the membrane-bound electron transfer flavoprotein ubiquinone oxidoreductase. Defects in electron-transfer-flavoprotein have been implicated in type II glutaricaciduria in which multiple acyl-CoA dehydrogenase deficiencies result in large excretion of glutaric, lactic, ethylmalonic, butyric, isobutyric, 2-methyl-butyrac, and isovaleric acids. Two transcript variants encoding different isoforms have been found for this gene. [provided by RefSeq, Jul 2008]

**Synonyms:**

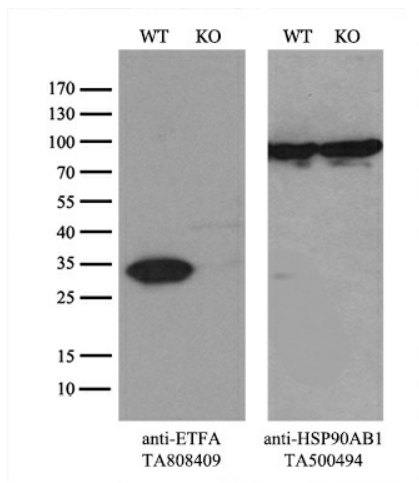
EMA; GA2; MADD

**Protein Families:**

Druggable Genome

**Product images:**


HEK293T cells were transfected with the pCMV6-ENTRY control (Cat# [PS100001], Left lane) or pCMV6-ENTRY ETFA (Cat# [RC202147], Right lane) cDNA for 48 hrs and lysed. Equivalent amounts of cell lysates (5 ug per lane) were separated by SDS-PAGE and immunoblotted with anti-ETFA (Cat# [TA808409])(1:2000). Positive lysates [LY424904] (100ug) and [LC424904] (20ug) can be purchased separately from OriGene.



Equivalent amounts of cell lysates (10 ug per lane) of wild-type 293T cells (WT, Cat# LC810293T) and ETFA-Knockout 293T cells (KO, Cat# [LC811427]) were separated by SDS-PAGE and immunoblotted with anti-ETFA monoclonal antibody [TA808409], (1:500). Then the blotted membrane was stripped and reprobed with anti-HSP90AB1 antibody ([TA500494]) as a loading control.