

## Product datasheet for CF808199

### EIF3D Mouse Monoclonal Antibody [Clone ID: OTI14D6]

#### Product data:

Product Type:	Primary Antibodies
Clone Name:	OTI14D6
Applications:	IHC, WB
Recommended Dilution:	WB 1:2000, IHC 1:150
Reactivity:	Human, Mouse, Rat
Host:	Mouse
Isotype:	IgG1
Clonality:	Monoclonal
Immunogen:	Full length human recombinant protein of human EIF3D (NP_003744) produced in HEK293T cell.
Formulation:	Lyophilized powder (original buffer 1X PBS, pH 7.3, 8% trehalose)
Reconstitution Method:	For reconstitution, we recommend adding 100uL distilled water to a final antibody concentration of about 1 mg/mL. To use this carrier-free antibody for conjugation experiment, we strongly recommend performing another round of desalting process. (OriGene recommends Zeba Spin Desalting Columns, 7KMWCO from Thermo Scientific)
Purification:	Purified from mouse ascites fluids or tissue culture supernatant by affinity chromatography (protein A/G)
Conjugation:	Unconjugated
Storage:	Store at -20°C as received.
Stability:	Stable for 12 months from date of receipt.
Predicted Protein Size:	63.8 kDa
Gene Name:	eukaryotic translation initiation factor 3 subunit D
Database Link:	<a href="#">NP_003744</a> <a href="#">Entrez Gene 55944 Mouse</a> <a href="#">Entrez Gene 8664 Human</a> <a href="#">O15371</a>

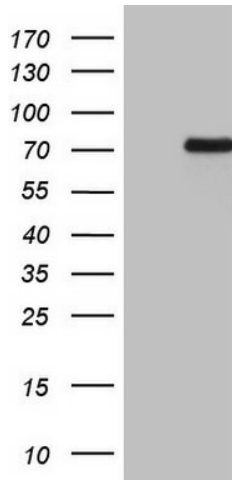

[View online »](#)

**Background:**

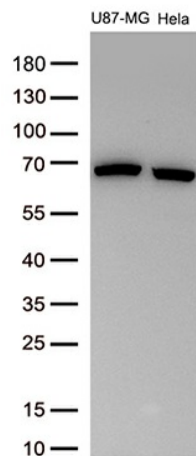
Eukaryotic translation initiation factor-3 (eIF3), the largest of the eIFs, is a multiprotein complex composed of at least ten nonidentical subunits. The complex binds to the 40S ribosome and helps maintain the 40S and 60S ribosomal subunits in a dissociated state. It is also thought to play a role in the formation of the 40S initiation complex by interacting with the ternary complex of eIF2/GTP/methionyl-tRNA, and by promoting mRNA binding. The protein encoded by this gene is the major RNA binding subunit of the eIF3 complex. [provided by RefSeq, Jul 2008]

**Synonyms:**

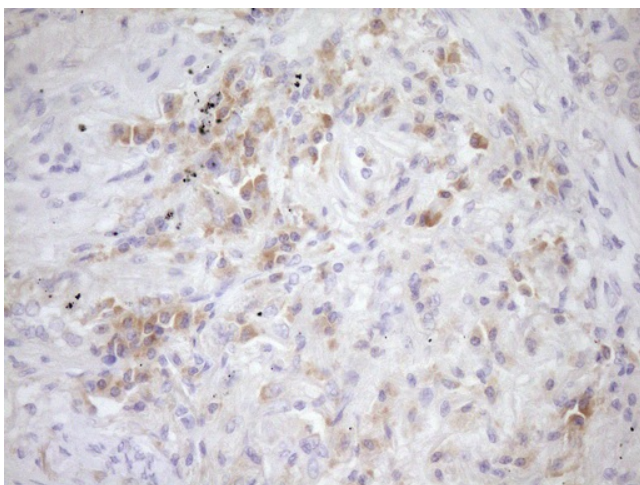
eIF3-p66; eIF3-zeta; EIF3S7

**Product images:**


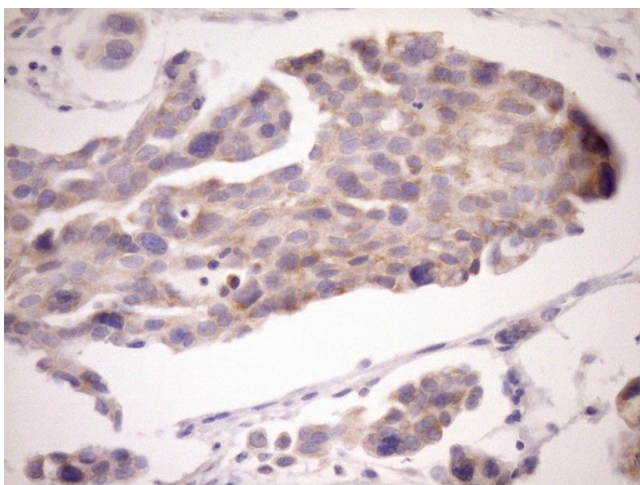
HEK293T cells were transfected with the pCMV6-ENTRY control (Cat# [PS100001], Left lane) or pCMV6-ENTRY EIF3D (Cat# [RC203830], Right lane) cDNA for 48 hrs and lysed. Equivalent amounts of cell lysates (5 ug per lane) were separated by SDS-PAGE and immunoblotted with anti-EIF3D (Cat# [TA808199])(1:2000). Positive lysates [LY401237] (100ug) and [LC401237] (20ug) can be purchased separately from OriGene.



Western blot analysis of extracts (30ug per lane) from 2 cell lines lysates by using anti-EIF3D monoclonal antibody ([TA808199], 1:500).



Immunohistochemical staining of paraffin-embedded Carcinoma of Human lung tissue using anti-EIF3D mouse monoclonal antibody. Heat-induced epitope retrieval by EDTA solution buffer pH 8.0 at 120°C for 3 min.



Immunohistochemical staining of paraffin-embedded Adenocarcinoma of Human ovary tissue using anti-EIF3D mouse monoclonal antibody. Heat-induced epitope retrieval by EDTA solution buffer pH 8.0 at 120°C for 3 min.