

Product datasheet for **CF808197**

BTG2 Mouse Monoclonal Antibody [Clone ID: OTI4C10]

Product data:

Product Type:	Primary Antibodies
Clone Name:	OTI4C10
Applications:	IHC, WB
Recommended Dilution:	WB 1:2000, IHC 1:150
Reactivity:	Human, Mouse, Rat
Host:	Mouse
Isotype:	IgG1
Clonality:	Monoclonal
Immunogen:	Full length human recombinant protein of human BTG2(NP_006754) produced in E.coli.
Formulation:	Lyophilized powder (original buffer 1X PBS, pH 7.3, 8% trehalose)
Reconstitution Method:	For reconstitution, we recommend adding 100uL distilled water to a final antibody concentration of about 1 mg/mL. To use this carrier-free antibody for conjugation experiment, we strongly recommend performing another round of desalting process. (OriGene recommends Zeba Spin Desalting Columns, 7KMWCO from Thermo Scientific)
Purification:	Purified from mouse ascites fluids or tissue culture supernatant by affinity chromatography (protein A/G)
Conjugation:	Unconjugated
Storage:	Store at -20°C as received.
Stability:	Stable for 12 months from date of receipt.
Predicted Protein Size:	17.2 kDa
Gene Name:	BTG anti-proliferation factor 2
Database Link:	NP_006754 Entrez Gene 12227 MouseEntrez Gene 29619 RatEntrez Gene 7832 Human P78543
Background:	The protein encoded by this gene is a member of the BTG/Tob family. This family has structurally related proteins that appear to have antiproliferative properties. This encoded protein is involved in the regulation of the G1/S transition of the cell cycle. [provided by RefSeq, Jul 2008]



[View online »](#)

Synonyms: APRO1; PC3; TIS21

Note: WB application: Only overexpression results are guaranteed, not endogenous.

Protein Families: Transcription Factors

Product images:

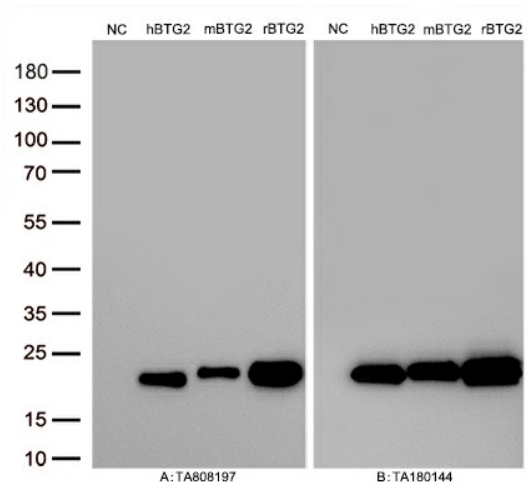
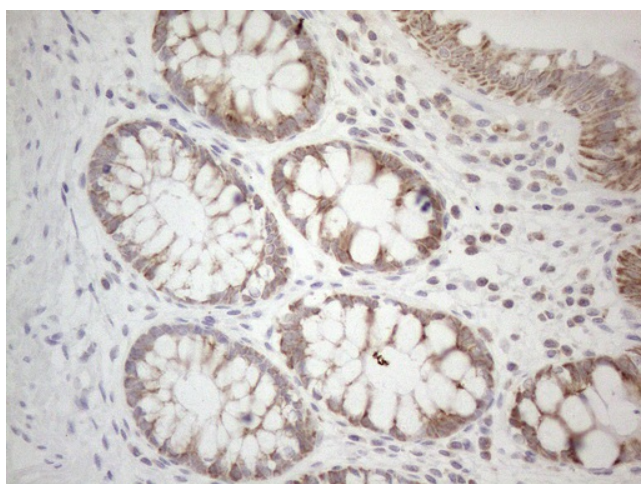
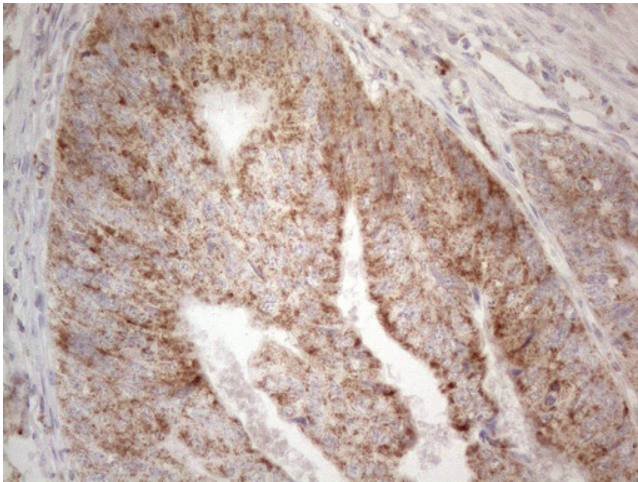


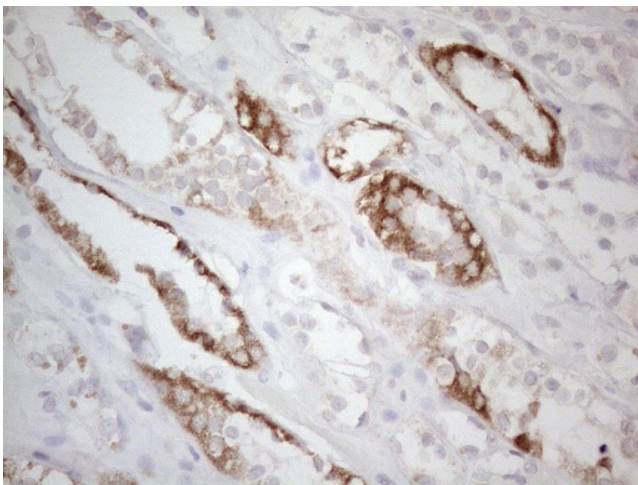
Figure A, Western blot analysis of overexpressed lysates (25ug per lane) from HEK293T cells transfected with empty plasmid ([PS100001], NC), human BTG2 plasmid ([RC214600], hBTG2), mouse BTG2 plasmid ([MR227532], mBTG2), rat BTG2 plasmid ([RR205779], rBTG2) using anti-BTG2 antibody [TA808197] (1:5000@1mg/ml). Figure B, Western blot analysis of the same samples as figure A with anti-DDK antibody ([TA180144], 1:5000@1mg/ml).



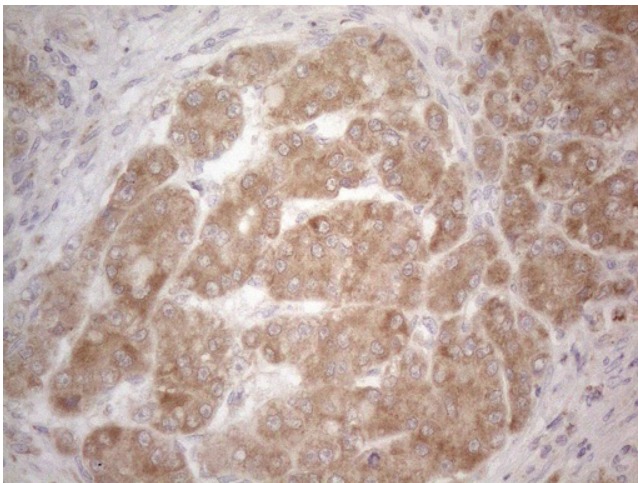
Immunohistochemical staining of paraffin-embedded Human colon tissue within the normal limits using anti-BTG2 mouse monoclonal antibody. Heat-induced epitope retrieval by EDTA solution buffer pH 8.0 at 120°C for 3 min.



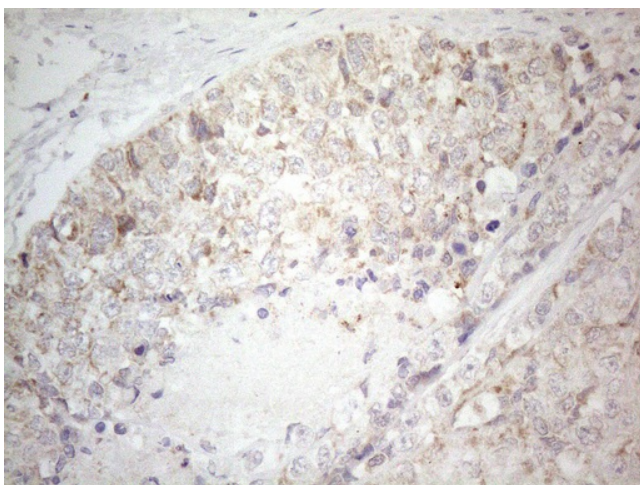
Immunohistochemical staining of paraffin-embedded Adenocarcinoma of Human colon tissue using anti-BTG2 mouse monoclonal antibody. Heat-induced epitope retrieval by EDTA solution buffer pH 8.0 at 120°C for 3 min.



Immunohistochemical staining of paraffin-embedded Human Kidney tissue within the normal limits using anti-BTG2 mouse monoclonal antibody. Heat-induced epitope retrieval by EDTA solution buffer pH 8.0 at 120°C for 3 min.



Immunohistochemical staining of paraffin-embedded Carcinoma of Human liver tissue using anti-BTG2 mouse monoclonal antibody. Heat-induced epitope retrieval by EDTA solution buffer pH 8.0 at 120°C for 3 min.



Immunohistochemical staining of paraffin-embedded Adenocarcinoma of Human endometrium tissue using anti-BTG2 mouse monoclonal antibody. Heat-induced epitope retrieval by EDTA solution buffer pH 8.0 at 120°C for 3 min.