

## Product datasheet for **CF808183**

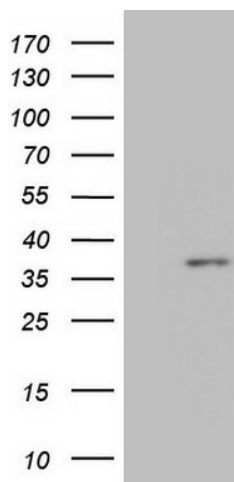
### MED6 Mouse Monoclonal Antibody [Clone ID: OTI3C9]

#### Product data:

Product Type:	Primary Antibodies
Clone Name:	OTI3C9
Applications:	WB
Recommended Dilution:	WB 1:2000
Reactivity:	Human, Mouse, Rat
Host:	Mouse
Isotype:	IgG1
Clonality:	Monoclonal
Immunogen:	Full length human recombinant protein of human MED6(NP_005457) produced in E.coli.
Formulation:	Lyophilized powder (original buffer 1X PBS, pH 7.3, 8% trehalose)
Reconstitution Method:	For reconstitution, we recommend adding 100uL distilled water to a final antibody concentration of about 1 mg/mL. To use this carrier-free antibody for conjugation experiment, we strongly recommend performing another round of desalting process. (OriGene recommends Zeba Spin Desalting Columns, 7KMWCO from Thermo Scientific)
Purification:	Purified from mouse ascites fluids or tissue culture supernatant by affinity chromatography (protein A/G)
Conjugation:	Unconjugated
Storage:	Store at -20°C as received.
Stability:	Stable for 12 months from date of receipt.
Predicted Protein Size:	28.2 kDa
Gene Name:	mediator complex subunit 6
Database Link:	<a href="#">NP_005457</a> <a href="#">Entrez Gene 69792 MouseEntrez Gene 299180 RatEntrez Gene 10001 Human O75586</a>
Synonyms:	ARC33; NY-REN-28
Protein Families:	Druggable Genome, Transcription Factors



[View online »](#)

**Product images:**

HEK293T cells were transfected with the pCMV6-ENTRY control (Left lane) or pCMV6-ENTRY MED6 ([RC202504], Right lane) cDNA for 48 hrs and lysed. Equivalent amounts of cell lysates (5 ug per lane) were separated by SDS-PAGE and immunoblotted with anti-MED6 (1:2000). Positive lysates [LY417284] (100ug) and [LC417284] (20ug) can be purchased separately from OriGene.