

Product datasheet for **CF808110**

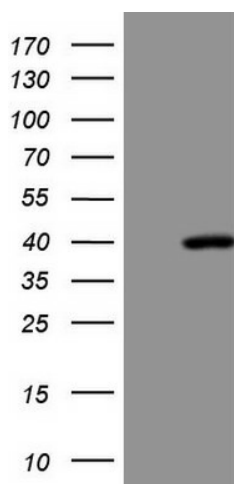
SPT3 (SUPT3H) Mouse Monoclonal Antibody [Clone ID: OTI1H7]

Product data:

Product Type:	Primary Antibodies
Clone Name:	OTI1H7
Applications:	WB
Recommended Dilution:	WB 1:2000
Reactivity:	Human, Mouse, Rat
Host:	Mouse
Isotype:	IgG1
Clonality:	Monoclonal
Immunogen:	Full length human recombinant protein of human SUPT3H(NP_852001) produced in E.coli.
Formulation:	Lyophilized powder (original buffer 1X PBS, pH 7.3, 8% trehalose)
Reconstitution Method:	For reconstitution, we recommend adding 100uL distilled water to a final antibody concentration of about 1 mg/mL. To use this carrier-free antibody for conjugation experiment, we strongly recommend performing another round of desalting process. (OriGene recommends Zeba Spin Desalting Columns, 7KMWCO from Thermo Scientific)
Purification:	Purified from mouse ascites fluids or tissue culture supernatant by affinity chromatography (protein A/G)
Conjugation:	Unconjugated
Storage:	Store at -20°C as received.
Stability:	Stable for 12 months from date of receipt.
Gene Name:	SPT3 homolog, SAGA and STAGA complex component
Database Link:	NP_852001 Entrez Gene 8464 Human O75486
Synonyms:	SPT3; SPT3L
Protein Families:	Stem cell - Pluripotency, Transcription Factors



[View online »](#)

Product images:

HEK293T cells were transfected with the pCMV6-ENTRY control (Left lane) or pCMV6-ENTRY SUPT3H ([RC208269], Right lane) cDNA for 48 hrs and lysed. Equivalent amounts of cell lysates (5 ug per lane) were separated by SDS-PAGE and immunoblotted with anti-SUPT3H (1:2000). Positive lysates [LY405748] (100ug) and [LC405748] (20ug) can be purchased separately from OriGene.