

## Product datasheet for **CF808065**

### SNRPB2 Mouse Monoclonal Antibody [Clone ID: OTI3F5]

#### Product data:

Product Type:	Primary Antibodies
Clone Name:	OTI3F5
Applications:	WB
Recommended Dilution:	WB 1:200~2000
Reactivity:	Human, Mouse, Rat
Host:	Mouse
Isotype:	IgG1
Clonality:	Monoclonal
Immunogen:	Full length human recombinant protein of human SNRPB2 (NP_937863) produced in E.coli.
Formulation:	Lyophilized powder (original buffer 1X PBS, pH 7.3, 8% trehalose)
Reconstitution Method:	For reconstitution, we recommend adding 100uL distilled water to a final antibody concentration of about 1 mg/mL. To use this carrier-free antibody for conjugation experiment, we strongly recommend performing another round of desalting process. (OriGene recommends Zeba Spin Desalting Columns, 7KMWCO from Thermo Scientific)
Purification:	Purified from mouse ascites fluids or tissue culture supernatant by affinity chromatography (protein A/G)
Conjugation:	Unconjugated
Storage:	Store at -20°C as received.
Stability:	Stable for 12 months from date of receipt.
Predicted Protein Size:	25.3 kDa
Gene Name:	small nuclear ribonucleoprotein polypeptide B2
Database Link:	<a href="#">NP_937863</a> <a href="#">Entrez Gene 6629 Human</a> <a href="#">P08579</a>



[View online »](#)

**Background:**

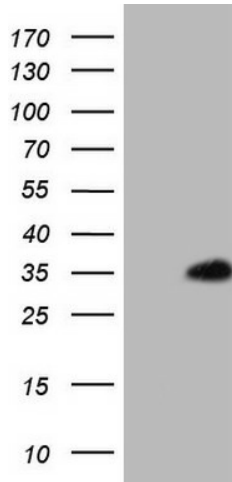
The protein encoded by this gene associates with stem loop IV of U2 small nuclear ribonucleoprotein (U2 snRNP) in the presence of snRNP-A'. The encoded protein may play a role in pre-mRNA splicing. Autoantibodies from patients with systemic lupus erythematosus frequently recognize epitopes on the encoded protein. Two transcript variants encoding the same protein have been found for this gene. [provided by RefSeq, Jul 2008]

**Synonyms:**

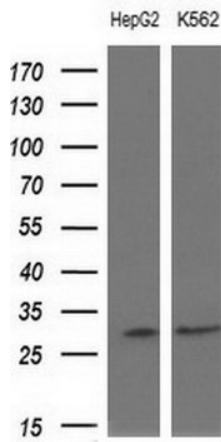
Msl1; U2B; U2B''

**Protein Pathways:**

Spliceosome

**Product images:**


HEK293T cells were transfected with the pCMV6-ENTRY control (Left lane) or pCMV6-ENTRY SNRPB2 ([RC207603], Right lane) cDNA for 48 hrs and lysed. Equivalent amounts of cell lysates (5 ug per lane) were separated by SDS-PAGE and immunoblotted with anti-SNRPB2. Positive lysates [LY404952] (100ug) and [LC404952] (20ug) can be purchased separately from OriGene.



Western blot analysis of extracts (10ug) from 2 different cell lines by using anti-SNRPB2 monoclonal antibody at 1:200 dilution.