

## Product datasheet for **CF808021**

### LCOR Mouse Monoclonal Antibody [Clone ID: OTI3D10]

#### Product data:

Product Type:	Primary Antibodies
Clone Name:	OTI3D10
Applications:	WB
Recommended Dilution:	WB 1:2000
Reactivity:	Human, Mouse
Host:	Mouse
Isotype:	IgG1
Clonality:	Monoclonal
Immunogen:	Human recombinant protein fragment corresponding to amino acids 204-433 of human LCOR(NP_115816) produced in E.coli.
Formulation:	Lyophilized powder (original buffer 1X PBS, pH 7.3, 8% trehalose)
Reconstitution Method:	For reconstitution, we recommend adding 100uL distilled water to a final antibody concentration of about 1 mg/mL. To use this carrier-free antibody for conjugation experiment, we strongly recommend performing another round of desalting process. (OriGene recommends Zeba Spin Desalting Columns, 7KMWCO from Thermo Scientific)
Purification:	Purified from mouse ascites fluids or tissue culture supernatant by affinity chromatography (protein A/G)
Conjugation:	Unconjugated
Storage:	Store at -20°C as received.
Stability:	Stable for 12 months from date of receipt.
Predicted Protein Size:	46.8 kDa
Gene Name:	ligand dependent nuclear receptor corepressor
Database Link:	<a href="#">NP_115816</a> <a href="#">Entrez Gene 212391 Mouse</a> <a href="#">Entrez Gene 84458 Human</a> <a href="#">Q96JN0</a>

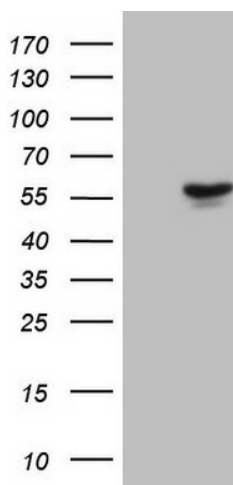
[View online »](#)

**Background:** LCOR is a transcriptional corepressor widely expressed in fetal and adult tissues that is recruited to agonist-bound nuclear receptors through a single LxxLL motif, also referred to as a nuclear receptor (NR) box (Fernandes et al., 2003 [PubMed 12535528]). [supplied by OMIM, Mar 2008]

**Synonyms:** MLR2

**Protein Families:** Druggable Genome

**Product images:**



HEK293T cells were transfected with the pCMV6-ENTRY control (Cat# [PS100001], Left lane) or pCMV6-ENTRY LCOR (Cat# [RC224042], Right lane) cDNA for 48 hrs and lysed. Equivalent amounts of cell lysates (5 ug per lane) were separated by SDS-PAGE and immunoblotted with anti-LCOR (Cat# [TA808021])(1:2000). Positive lysates [LY410134] (100ug) and [LC410134] (20ug) can be purchased separately from OriGene.