

## Product datasheet for **CF807945**

### Jagged1 (JAG1) Mouse Monoclonal Antibody [Clone ID: OT11F1]

#### Product data:

Product Type:	Primary Antibodies
Clone Name:	OT11F1
Applications:	WB
Recommended Dilution:	WB 1:500~2000
Reactivity:	Human, Mouse, Rat
Host:	Mouse
Isotype:	IgG1
Clonality:	Monoclonal
Immunogen:	Human recombinant protein fragment corresponding to amino acids 523-759 of human JAG1(NP_000205) produced in E.coli.
Formulation:	Lyophilized powder (original buffer 1X PBS, pH 7.3, 8% trehalose)
Reconstitution Method:	For reconstitution, we recommend adding 100uL distilled water to a final antibody concentration of about 1 mg/mL. To use this carrier-free antibody for conjugation experiment, we strongly recommend performing another round of desalting process. (OriGene recommends Zeba Spin Desalting Columns, 7KMWCO from Thermo Scientific)
Purification:	Purified from mouse ascites fluids or tissue culture supernatant by affinity chromatography (protein A/G)
Conjugation:	Unconjugated
Storage:	Store at -20°C as received.
Stability:	Stable for 12 months from date of receipt.
Predicted Protein Size:	133.6 kDa
Gene Name:	jagged canonical Notch ligand 1
Database Link:	<a href="#">NP_000205</a> <a href="#">Entrez Gene 16449 Mouse</a> <a href="#">Entrez Gene 29146 Rat</a> <a href="#">Entrez Gene 182 Human P78504</a>
Synonyms:	AGS; AHD; AWS; CD339; HJ1; JAGL1
Protein Families:	Druggable Genome, ES Cell Differentiation/IPS, Transmembrane



[View online »](#)

Protein Pathways: Notch signaling pathway

**Product images:**

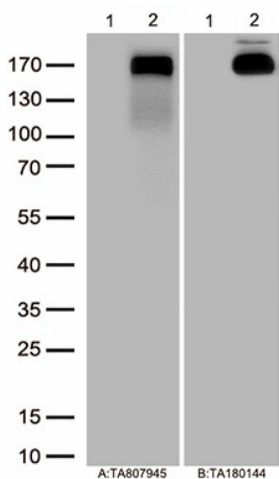
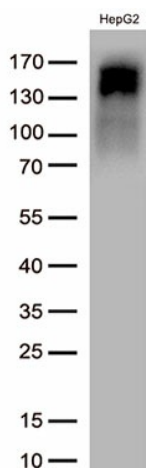


Figure A, Western blot analysis of overexpressed lysates(25ug per lane) from HEK293T cells transfected with empty plasmid ([PS100001], lane 1) , human JAG1 plasmid ([RC210516], lane 2) using anti-JAG1 antibody [TA807945] (1:5000). Figure B, Western blot analysis of the same samples as figure A with anti-DDK antibody ([TA180144], 1:5000)



Western blot analysis of extracts (50ug per lane) from HepG2 cell lines lysates by using anti-JAG1 monoclonal antibody([TA807945], 1:3000)