

## Product datasheet for **CF807845**

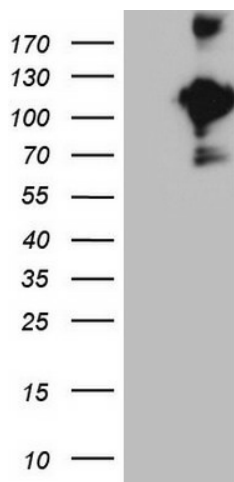
### CD22 Mouse Monoclonal Antibody [Clone ID: OT1E6]

#### Product data:

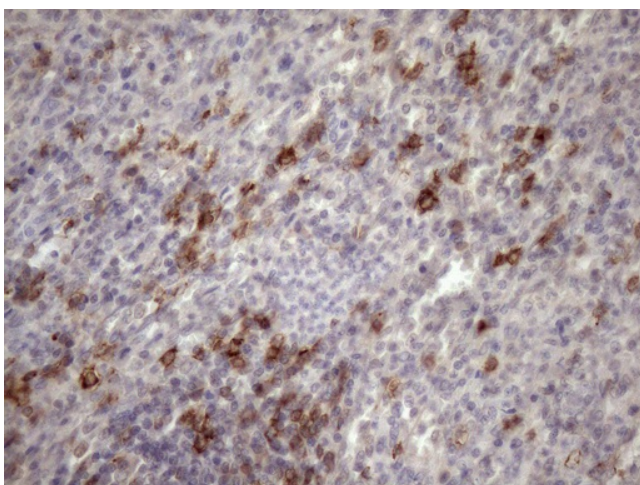
Product Type:	Primary Antibodies
Clone Name:	OT1E6
Applications:	IHC, WB
Recommended Dilution:	WB 1:2000, IHC 1:150
Reactivity:	Human
Host:	Mouse
Isotype:	IgG1
Clonality:	Monoclonal
Immunogen:	Human recombinant protein fragment corresponding to amino acids 707-847 of human CD22(NP_001762) produced in E.coli.
Formulation:	Lyophilized powder (original buffer 1X PBS, pH 7.3, 8% trehalose)
Reconstitution Method:	For reconstitution, we recommend adding 100uL distilled water to a final antibody concentration of about 1 mg/mL. To use this carrier-free antibody for conjugation experiment, we strongly recommend performing another round of desalting process. (OriGene recommends Zeba Spin Desalting Columns, 7KMWCO from Thermo Scientific)
Purification:	Purified from mouse ascites fluids or tissue culture supernatant by affinity chromatography (protein A/G)
Conjugation:	Unconjugated
Storage:	Store at -20°C as received.
Stability:	Stable for 12 months from date of receipt.
Gene Name:	CD22 molecule
Database Link:	<a href="#">NP_001762</a> <a href="#">Entrez Gene 933 Human P20273</a>
Synonyms:	SIGLEC-2; SIGLEC2
Protein Families:	Druggable Genome, Transmembrane
Protein Pathways:	B cell receptor signaling pathway, Cell adhesion molecules (CAMs), Hematopoietic cell lineage



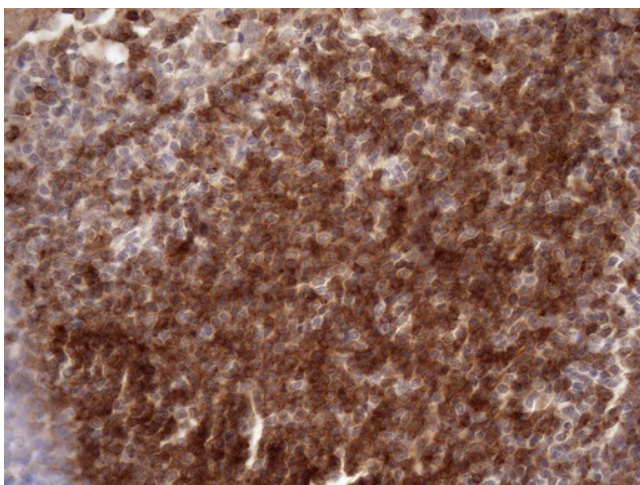
[View online »](#)

**Product images:**

HEK293T cells were transfected with the pCMV6-ENTRY control (Left lane) or pCMV6-ENTRY CD22 ([RC216939], Right lane) cDNA for 48 hrs and lysed. Equivalent amounts of cell lysates (5 ug per lane) were separated by SDS-PAGE and immunoblotted with anti-CD22 (1:2000).



Immunohistochemical staining of paraffin-embedded Human lymph node tissue within the normal limits using anti-CD22 mouse monoclonal antibody. (Heat-induced epitope retrieval by 1mM EDTA in 10mM Tris buffer (pH8.5) at 120°C for 3min, [TA807845]) (1:150)



Immunohistochemical staining of paraffin-embedded Human tonsil within the normal limits using anti-CD22 mouse monoclonal antibody. (Heat-induced epitope retrieval by 1mM EDTA in 10mM Tris buffer (pH8.5) at 120°C for 3min, [TA807845]) (1:150)