

Product datasheet for **CF807835**

IGF1 Receptor (IGF1R) Mouse Monoclonal Antibody [Clone ID: OTI4C4]

Product data:

Product Type:	Primary Antibodies
Clone Name:	OTI4C4
Applications:	FC, WB
Recommended Dilution:	WB 1:2000
Reactivity:	Human, Mouse, Rat
Host:	Mouse
Isotype:	IgG1
Clonality:	Monoclonal
Immunogen:	Human recombinant protein fragment corresponding to amino acids 741-935 of human IGF1R(NP_000866) produced in Insect.
Formulation:	Lyophilized powder (original buffer 1X PBS, pH 7.3, 8% trehalose)
Reconstitution Method:	For reconstitution, we recommend adding 100uL distilled water to a final antibody concentration of about 1 mg/mL. To use this carrier-free antibody for conjugation experiment, we strongly recommend performing another round of desalting process. (OriGene recommends Zeba Spin Desalting Columns, 7KMWCO from Thermo Scientific)
Purification:	Purified from mouse ascites fluids or tissue culture supernatant by affinity chromatography (protein A/G)
Conjugation:	Unconjugated
Storage:	Store at -20°C as received.
Stability:	Stable for 12 months from date of receipt.
Predicted Protein Size:	81 kDa
Gene Name:	insulin like growth factor 1 receptor
Database Link:	NP_000866 Entrez Gene 16001 Mouse Entrez Gene 25718 Rat Entrez Gene 3480 Human P08069



[View online »](#)

Background:

This receptor binds insulin-like growth factor with a high affinity. It has tyrosine kinase activity. The insulin-like growth factor I receptor plays a critical role in transformation events. Cleavage of the precursor generates alpha and beta subunits. It is highly overexpressed in most malignant tissues where it functions as an anti-apoptotic agent by enhancing cell survival. Alternatively spliced transcript variants encoding distinct isoforms have been found for this gene. [provided by RefSeq, May

Synonyms:

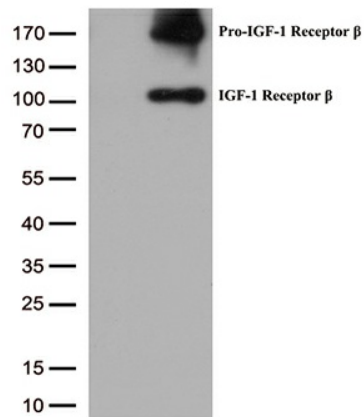
CD221; IGFIR; IGFR; JTK13

Protein Families:

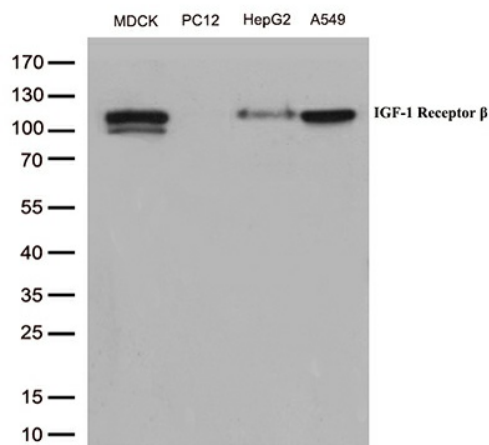
Druggable Genome, Protein Kinase, Transmembrane

Protein Pathways:

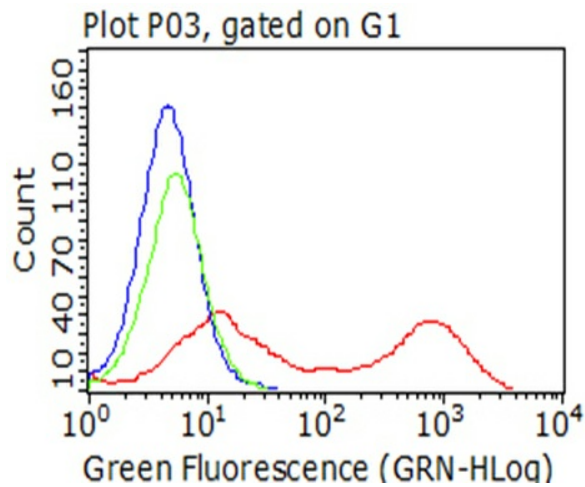
Adherens junction, Colorectal cancer, Endocytosis, Focal adhesion, Glioma, Long-term depression, Melanoma, Oocyte meiosis, Pathways in cancer, Progesterone-mediated oocyte maturation, Prostate cancer

Product images:


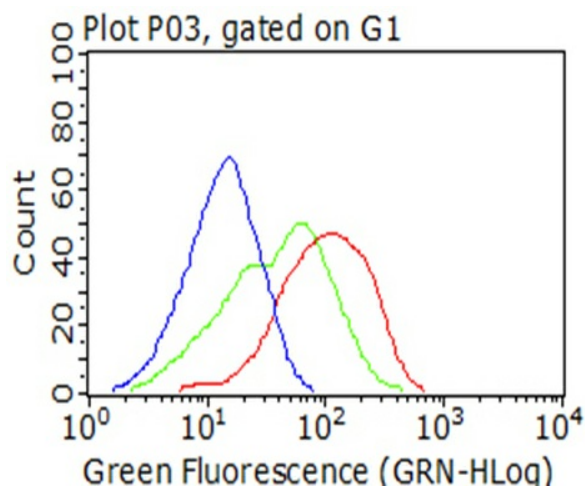
HEK293T cells were transfected with the pCMV6-ENTRY control (Cat# [PS100001], Left lane) or pCMV6-ENTRY IGF1R (Cat# [RC214928], Right lane) cDNA for 48 hrs and lysed. Equivalent amounts of cell lysates (5 ug per lane) were separated by SDS-PAGE and immunoblotted with anti-IGF1R (Cat# [TA807835])(1:2000). Positive lysates [LY400311] (100ug) and [LC400311] (20ug) can be purchased separately from OriGene.



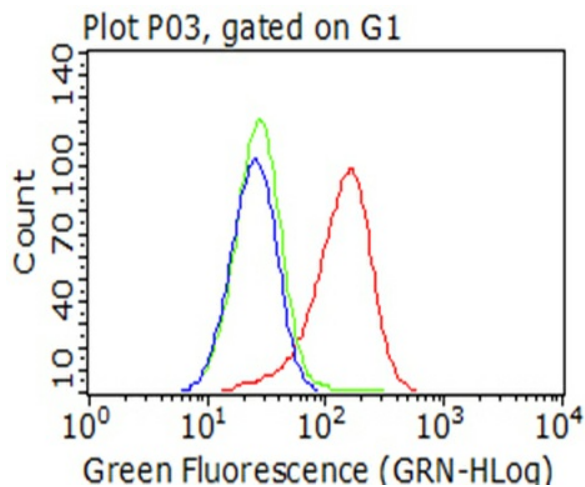
Western blot analysis of extracts (35ug) from 4 cell lines lysates by using anti-IGF1R monoclonal antibody (1:500).



Living HEK293T cells transfected with either [RC214928] overexpress plasmid (Red), compared to an IgG isotype control, (Green) or empty vector control plasmid (Blue) were immunostained by anti-IGF1R antibody ([TA807835]), and then analyzed by flow cytometry (1:100).



Flow cytometric analysis of living HepG2 cells, using anti-IGF1R antibody ([TA807835]), (red), compared to an IgG isotype control, (green), and negative control (PBS), (blue) (1:25).



Flow cytometric analysis of living A549 cells, using anti-IGF1R antibody ([TA807835]), (red), compared to an IgG isotype control, (green), and negative control (PBS), (blue) (1:25).