

## Product datasheet for **CF807809**

### **B4GALT4 Mouse Monoclonal Antibody [Clone ID: OTI8B6]**

#### **Product data:**

<b>Product Type:</b>	Primary Antibodies
<b>Clone Name:</b>	OTI8B6
<b>Applications:</b>	IHC, WB
<b>Recommended Dilution:</b>	WB 1:500, IHC 1:150
<b>Reactivity:</b>	Human
<b>Host:</b>	Mouse
<b>Isotype:</b>	IgG1
<b>Clonality:</b>	Monoclonal
<b>Immunogen:</b>	Human recombinant protein fragment corresponding to amino acids 40-322 of human B4GALT4(NP_003769) produced in E.coli.
<b>Formulation:</b>	Lyophilized powder (original buffer 1X PBS, pH 7.3, 8% trehalose)
<b>Reconstitution Method:</b>	For reconstitution, we recommend adding 100uL distilled water to a final antibody concentration of about 1 mg/mL. To use this carrier-free antibody for conjugation experiment, we strongly recommend performing another round of desalting process. (OriGene recommends Zeba Spin Desalting Columns, 7KMWCO from Thermo Scientific)
<b>Purification:</b>	Purified from mouse ascites fluids or tissue culture supernatant by affinity chromatography (protein A/G)
<b>Conjugation:</b>	Unconjugated
<b>Storage:</b>	Store at -20°C as received.
<b>Stability:</b>	Stable for 12 months from date of receipt.
<b>Predicted Protein Size:</b>	39.9 kDa
<b>Gene Name:</b>	beta-1,4-galactosyltransferase 4
<b>Database Link:</b>	<a href="#">NP_003769</a> <a href="#">Entrez Gene 8702 Human</a> <a href="#">O60513</a>



[View online »](#)

**Background:**

This gene is one of seven beta-1,4-galactosyltransferase (beta4GalT) genes. They encode type II membrane-bound glycoproteins that appear to have exclusive specificity for the donor substrate UDP-galactose; all transfer galactose in a beta1,4 linkage to similar acceptor sugars: GlcNAc, Glc, and Xyl. Each beta4GalT has a distinct function in the biosynthesis of different glycoconjugates and saccharide structures. As type II membrane proteins, they have an N-terminal hydrophobic signal sequence that directs the protein to the Golgi apparatus and which then remains uncleaved to function as a transmembrane anchor. By sequence similarity, the beta4GalTs form four groups: beta4GalT1 and beta4GalT2, beta4GalT3 and beta4GalT4, beta4GalT5 and beta4GalT6, and beta4GalT7. The enzyme encoded by this gene appears to mainly play a role in glycolipid biosynthesis. Two alternatively spliced transcript variants have been found for this gene. [provided by RefSeq, Jul 2008]

**Synonyms:**

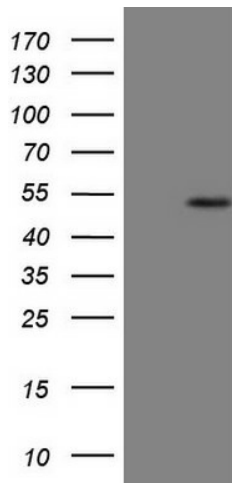
B4Gal-T4; beta4Gal-T4

**Protein Families:**

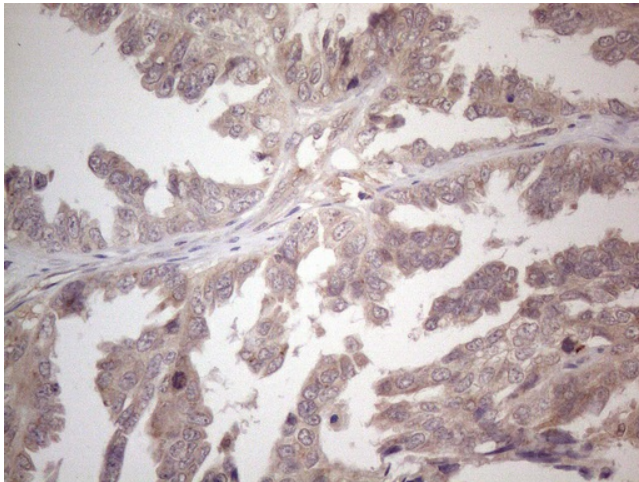
Transmembrane

**Protein Pathways:**

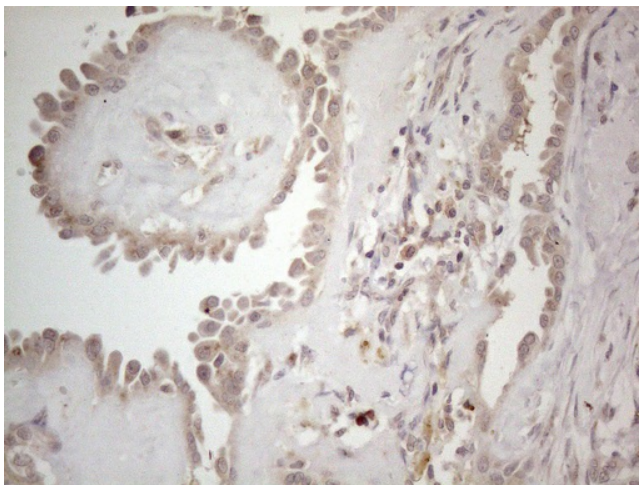
Glycosphingolipid biosynthesis - lacto and neolacto series, Keratan sulfate biosynthesis, Metabolic pathways

**Product images:**


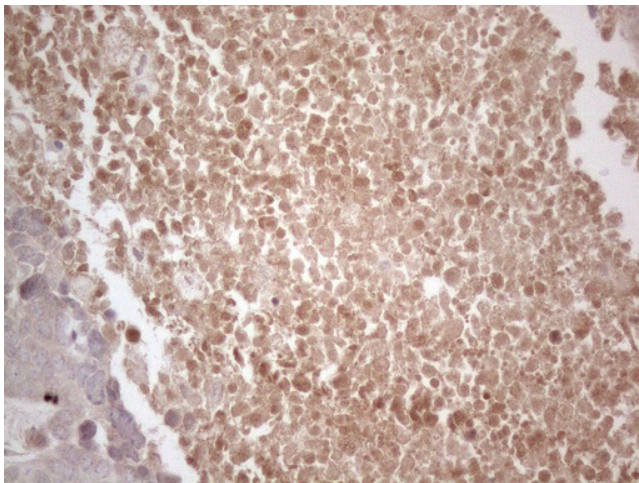
HEK293T cells were transfected with the pCMV6-ENTRY control (Cat# [PS100001], Left lane) or pCMV6-ENTRY B4GALT4 (Cat# [RC209493], Right lane) cDNA for 48 hrs and lysed. Equivalent amounts of cell lysates (5 ug per lane) were separated by SDS-PAGE and immunoblotted with anti-B4GALT4 (Cat# [TA807809])(1:500). Positive lysates [LY418441] (100ug) and [LC418441] (20ug) can be purchased separately from OriGene.



Immunohistochemical staining of paraffin-embedded Adenocarcinoma of Human ovary tissue using anti-B4GALT4 mouse monoclonal antibody. (Heat-induced epitope retrieval by 1mM EDTA in 10mM Tris buffer (pH8.5) at 120°C for 3min, [TA807809]) (1:150)



Immunohistochemical staining of paraffin-embedded Carcinoma of Human thyroid tissue using anti-B4GALT4 mouse monoclonal antibody. (Heat-induced epitope retrieval by 1mM EDTA in 10mM Tris buffer (pH8.5) at 120°C for 3min, [TA807809]) (1:150)



Immunohistochemical staining of paraffin-embedded Adenocarcinoma of Human endometrium tissue using anti-B4GALT4 mouse monoclonal antibody. (Heat-induced epitope retrieval by 1mM EDTA in 10mM Tris buffer (pH8.5) at 120°C for 3min, [TA807809]) (1:150)