

## Product datasheet for **CF807769**

### **CGK2 (PRKG2) Mouse Monoclonal Antibody [Clone ID: OTI15E6]**

#### **Product data:**

<b>Product Type:</b>	Primary Antibodies
<b>Clone Name:</b>	OTI15E6
<b>Applications:</b>	WB
<b>Recommended Dilution:</b>	WB 1:2000
<b>Reactivity:</b>	Human, Mouse, Rat
<b>Host:</b>	Mouse
<b>Isotype:</b>	IgG1
<b>Clonality:</b>	Monoclonal
<b>Immunogen:</b>	Human recombinant protein fragment corresponding to amino acids 40-320 of human PRKG2 (NP_006250) produced in E.coli.
<b>Formulation:</b>	Lyophilized powder (original buffer 1X PBS, pH 7.3, 8% trehalose)
<b>Reconstitution Method:</b>	For reconstitution, we recommend adding 100uL distilled water to a final antibody concentration of about 1 mg/mL. To use this carrier-free antibody for conjugation experiment, we strongly recommend performing another round of desalting process. (OriGene recommends Zeba Spin Desalting Columns, 7KMWCO from Thermo Scientific)
<b>Purification:</b>	Purified from mouse ascites fluids or tissue culture supernatant by affinity chromatography (protein A/G)
<b>Conjugation:</b>	Unconjugated
<b>Storage:</b>	Store at -20°C as received.
<b>Stability:</b>	Stable for 12 months from date of receipt.
<b>Predicted Protein Size:</b>	87.3 kDa
<b>Gene Name:</b>	protein kinase cGMP-dependent 2
<b>Database Link:</b>	<a href="#">NP_006250</a> <a href="#">Entrez Gene 19092 Mouse</a> <a href="#">Entrez Gene 25523 Rat</a> <a href="#">Entrez Gene 5593 Human</a> <a href="#">Q13237</a>



[View online »](#)

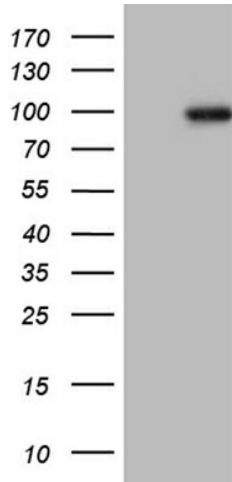
**Background:** This gene encodes a protein that belongs to the serine/threonine protein kinase family of proteins. The encoded protein plays a role in the regulation of fluid balance in the intestine. A similar protein in mouse is thought to regulate differentiation and proliferation of cells in the colon. Alternate splicing results in multiple transcript variants. [provided by RefSeq, Sep 2013]

**Synonyms:** cGK2; cGKII; PRKGR2

**Protein Families:** Druggable Genome, Protein Kinase

**Protein Pathways:** Gap junction, Long-term depression, Olfactory transduction

**Product images:**



HEK293T cells were transfected with the pCMV6-ENTRY control (Left lane) or pCMV6-ENTRY PRKG2 ([RC215879], Right lane) cDNA for 48 hrs and lysed. Equivalent amounts of cell lysates (5 ug per lane) were separated by SDS-PAGE and immunoblotted with anti-PRKG2 (1:2000). Positive lysates [LY401884] (100ug) and [LC401884] (20ug) can be purchased separately from OriGene.