

Product datasheet for **CF807767**

APPL (APPL1) Mouse Monoclonal Antibody [Clone ID: OTI7C3]

Product data:

Product Type:	Primary Antibodies
Clone Name:	OTI7C3
Applications:	WB
Recommended Dilution:	WB 1:500
Reactivity:	Human, Mouse, Rat
Host:	Mouse
Isotype:	IgG1
Clonality:	Monoclonal
Immunogen:	Full length human recombinant protein of human APPL1 (NP_036228) produced in HEK293T cell.
Formulation:	Lyophilized powder (original buffer 1X PBS, pH 7.3, 8% trehalose)
Reconstitution Method:	For reconstitution, we recommend adding 100uL distilled water to a final antibody concentration of about 1 mg/mL. To use this carrier-free antibody for conjugation experiment, we strongly recommend performing another round of desalting process. (OriGene recommends Zeba Spin Desalting Columns, 7KMWCO from Thermo Scientific)
Purification:	Purified from mouse ascites fluids or tissue culture supernatant by affinity chromatography (protein A/G)
Conjugation:	Unconjugated
Storage:	Store at -20°C as received.
Stability:	Stable for 12 months from date of receipt.
Gene Name:	adaptor protein, phosphotyrosine interacting with PH domain and leucine zipper 1
Database Link:	NP_036228 Entrez Gene 72993 Mouse Entrez Gene 290537 Rat Entrez Gene 26060 Human Q9UKG1



[View online »](#)

Background:

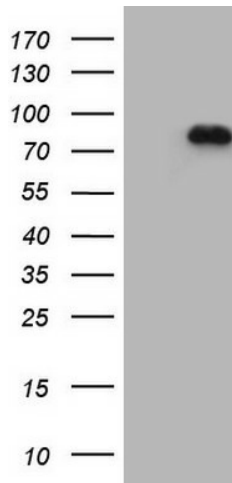
The protein encoded by this gene has been shown to be involved in the regulation of cell proliferation, and in the crosstalk between the adiponectin signalling and insulin signalling pathways. The encoded protein binds many other proteins, including RAB5A, DCC, AKT2, PIK3CA, adiponectin receptors, and proteins of the NuRD/MeCP1 complex. This protein is found associated with endosomal membranes, but can be released by EGF and translocated to the nucleus. [provided by RefSeq, Jul 2008]

Synonyms:

APPL; DIP13alpha; MODY14

Protein Pathways:

Colorectal cancer, Pathways in cancer

Product images:

HEK293T cells were transfected with the pCMV6-ENTRY control (Left lane) or pCMV6-ENTRY APPL1 ([RC206021], Right lane) cDNA for 48 hrs and lysed. Equivalent amounts of cell lysates (5 ug per lane) were separated by SDS-PAGE and immunoblotted with anti-APPL1 (1:500). Positive lysates [LY402145] (100ug) and [LC402145] (20ug) can be purchased separately from OriGene.