

## Product datasheet for **CF807724**

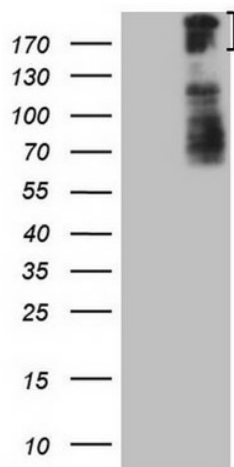
### BCOR Mouse Monoclonal Antibody [Clone ID: OTI4F6]

#### Product data:

Product Type:	Primary Antibodies
Clone Name:	OTI4F6
Applications:	WB
Recommended Dilution:	WB 1:2000
Reactivity:	Human, Mouse, Rat
Host:	Mouse
Isotype:	IgG2b
Clonality:	Monoclonal
Immunogen:	Human recombinant protein fragment corresponding to amino acids 384-668 of human BCOR(NP_060215) produced in E.coli.
Formulation:	Lyophilized powder (original buffer 1X PBS, pH 7.3, 8% trehalose)
Reconstitution Method:	For reconstitution, we recommend adding 100uL distilled water to a final antibody concentration of about 1 mg/mL. To use this carrier-free antibody for conjugation experiment, we strongly recommend performing another round of desalting process. (OriGene recommends Zeba Spin Desalting Columns, 7KMWCO from Thermo Scientific)
Purification:	Purified from mouse ascites fluids or tissue culture supernatant by affinity chromatography (protein A/G)
Conjugation:	Unconjugated
Storage:	Store at -20°C as received.
Stability:	Stable for 12 months from date of receipt.
Predicted Protein Size:	188 kDa
Gene Name:	BCL6 corepressor
Database Link:	<a href="#">NP_060215</a> <a href="#">Entrez Gene 71458 Mouse</a> <a href="#">Entrez Gene 317346 Rat</a> <a href="#">Entrez Gene 54880 Human</a> <a href="#">Q6W2J9</a>
Synonyms:	ANOP2; MAA2; MCOPS2
Protein Families:	Transcription Factors



[View online »](#)

**Product images:**

HEK293T cells were transfected with the pCMV6-ENTRY control (Cat# [PS100001], Left lane) or pCMV6-ENTRY BCOR (Cat# [RC213468], Right lane) cDNA for 48 hrs and lysed. Equivalent amounts of cell lysates (5 ug per lane) were separated by SDS-PAGE and immunoblotted with anti-BCOR antibody (Cat# [TA807724]). Positive lysates [LY413571] (100ug) and [LC413571] (20ug) can be purchased separately from OriGene.