

## Product datasheet for **CF807714**

### CTLA4 Mouse Monoclonal Antibody [Clone ID: OTI8D12]

#### Product data:

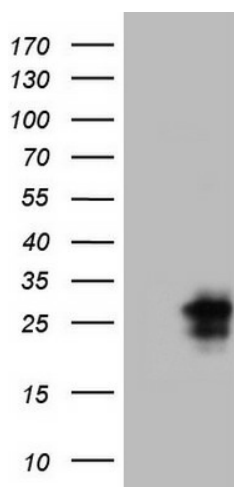
Product Type:	Primary Antibodies
Clone Name:	OTI8D12
Applications:	WB
Recommended Dilution:	WB 1:2000
Reactivity:	Human
Host:	Mouse
Isotype:	IgG1
Clonality:	Monoclonal
Immunogen:	Full length human recombinant protein of human CTLA4 (NP_001032720) produced in HEK293T cell.
Formulation:	Lyophilized powder (original buffer 1X PBS, pH 7.3, 8% trehalose)
Reconstitution Method:	For reconstitution, we recommend adding 100uL distilled water to a final antibody concentration of about 1 mg/mL. To use this carrier-free antibody for conjugation experiment, we strongly recommend performing another round of desalting process. (OriGene recommends Zeba Spin Desalting Columns, 7KMWCO from Thermo Scientific)
Purification:	Purified from mouse ascites fluids or tissue culture supernatant by affinity chromatography (protein A/G)
Conjugation:	Unconjugated
Storage:	Store at -20°C as received.
Stability:	Stable for 12 months from date of receipt.
Predicted Protein Size:	15 kDa
Gene Name:	cytotoxic T-lymphocyte associated protein 4
Database Link:	<a href="#">NP_001032720</a> <a href="#">Entrez Gene 1493 Human</a> <a href="#">P16410</a>
Synonyms:	ALPS5; CD; CD152; CELIAC3; CTLA-4; GRD4; GSE; IDDM12
Protein Families:	Druggable Genome, Transmembrane



[View online »](#)

**Protein Pathways:** Autoimmune thyroid disease, Cell adhesion molecules (CAMs), T cell receptor signaling pathway

**Product images:**



HEK293T cells were transfected with the pCMV6-ENTRY control (Left lane) or pCMV6-ENTRY CTLA4 ([RC213631], Right lane) cDNA for 48 hrs and lysed. Equivalent amounts of cell lysates (5 ug per lane) were separated by SDS-PAGE and immunoblotted with anti-CTLA4 (1:2000). Positive lysates [LY421970] (100ug) and [LC421970] (20ug) can be purchased separately from OriGene.