

## Product datasheet for **CF807710**

### NDUFB11 Mouse Monoclonal Antibody [Clone ID: OTI2E10]

#### Product data:

Product Type:	Primary Antibodies
Clone Name:	OTI2E10
Applications:	WB
Recommended Dilution:	WB 1:2000
Reactivity:	Human
Host:	Mouse
Isotype:	IgG1
Clonality:	Monoclonal
Immunogen:	Human recombinant protein fragment corresponding to amino acids 30-163 of human NDUFB11(NP_061929) produced in E.coli.
Formulation:	Lyophilized powder (original buffer 1X PBS, pH 7.3, 8% trehalose)
Reconstitution Method:	For reconstitution, we recommend adding 100uL distilled water to a final antibody concentration of about 1 mg/mL. To use this carrier-free antibody for conjugation experiment, we strongly recommend performing another round of desalting process. (OriGene recommends Zeba Spin Desalting Columns, 7KMWCO from Thermo Scientific)
Purification:	Purified from mouse ascites fluids or tissue culture supernatant by affinity chromatography (protein A/G)
Conjugation:	Unconjugated
Storage:	Store at -20°C as received.
Stability:	Stable for 12 months from date of receipt.
Predicted Protein Size:	18.2 kDa
Gene Name:	NADH:ubiquinone oxidoreductase subunit B11
Database Link:	<a href="#">NP_061929</a> <a href="#">Entrez Gene 54539 Human</a> <a href="#">Q9NX14</a>



[View online »](#)

**Background:**

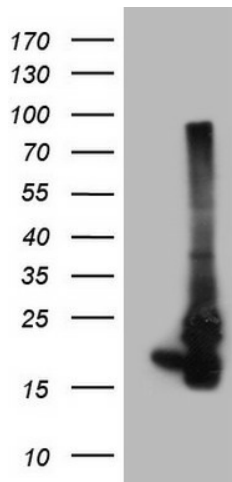
NDUFB11 is a component of mitochondrial complex I. Complex I catalyzes the first step in the electron transport chain, the transfer of 2 electrons from NADH to ubiquinone, coupled to the translocation of 4 protons across the membrane (Carroll et al., 2002 [PubMed 12381726]). [supplied by OMIM, Feb 2009]. Transcript Variant: This variant (2) uses a different splice site in the 3' coding region, compared to variant 1. The resulting protein (isoform 2) has a shorter C-terminus when it is compared to isoform 1. ##Evidence-Data-START## Transcript exon combination :: AY359056.1, BE781599.1 [ECO:0000332] RNAseq introns :: single sample supports all introns ERS025084, ERS025087 [ECO:0000348] ##Evidence-Data-END## ##RefSeq-Attributes-START## gene product(s) localized to mito. :: reported by MitoCarta ##RefSeq-Attributes-END##

**Synonyms:**

CI-ESSS; ESSH; Np15; NP17.3; P17.3

**Protein Families:**

Transmembrane

**Product images:**

HEK293T cells were transfected with the pCMV6-ENTRY control (Left lane) or pCMV6-ENTRY NDUFB11 ([RC213937], Right lane) cDNA for 48 hrs and lysed. Equivalent amounts of cell lysates (5 ug per lane) were separated by SDS-PAGE and immunoblotted with anti-NDUFB11 (1:2000). Positive lysates [LY412795] (100ug) and [LC412795] (20ug) can be purchased separately from OriGene.