

Product datasheet for **CF807654**

LIME (LIME1) Mouse Monoclonal Antibody [Clone ID: OTI7A9]

Product data:

Product Type:	Primary Antibodies
Clone Name:	OTI7A9
Applications:	WB
Recommended Dilution:	WB 1:2000
Reactivity:	Human
Host:	Mouse
Isotype:	IgG1
Clonality:	Monoclonal
Immunogen:	Human recombinant protein fragment corresponding to amino acids 30-295 of human LIME1(NP_060276) produced in E.coli.
Formulation:	Lyophilized powder (original buffer 1X PBS, pH 7.3, 8% trehalose)
Reconstitution Method:	For reconstitution, we recommend adding 100uL distilled water to a final antibody concentration of about 1 mg/mL. To use this carrier-free antibody for conjugation experiment, we strongly recommend performing another round of desalting process. (OriGene recommends Zeba Spin Desalting Columns, 7KMWCO from Thermo Scientific)
Purification:	Purified from mouse ascites fluids or tissue culture supernatant by affinity chromatography (protein A/G)
Conjugation:	Unconjugated
Storage:	Store at -20°C as received.
Stability:	Stable for 12 months from date of receipt.
Predicted Protein Size:	31.1 kDa
Gene Name:	Lck interacting transmembrane adaptor 1
Database Link:	NP_060276 Entrez Gene 54923 Human Q9H400



[View online »](#)

Background:

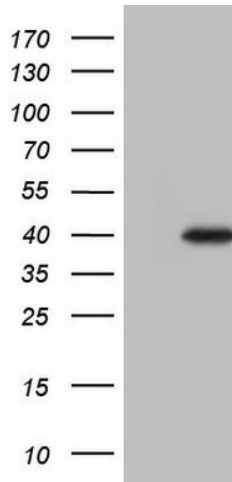
LIME1 is a raft-associated transmembrane adaptor phosphoprotein that is preferentially expressed in hemopoietic cells, particularly T cells (Brdickova et al., 2003 [PubMed 14610046]; Hur et al., 2003 [PubMed 14610044]). [supplied by OMIM, Mar 2008]. ##Evidence-Data-START## Transcript exon combination :: AK000413.1, BC017016.1 [ECO:0000332] RNAseq introns :: single sample supports all introns ERS025081, ERS025083 [ECO:0000348] ##Evidence-Data-END## COMPLETENESS: complete on the 3' end.

Synonyms:

dj583P15.4; LIME

Protein Families:

Transmembrane

Product images:

HEK293T cells were transfected with the pCMV6-ENTRY control (Left lane) or pCMV6-ENTRY LIME1 ([RC201909], Right lane) cDNA for 48 hrs and lysed. Equivalent amounts of cell lysates (5 ug per lane) were separated by SDS-PAGE and immunoblotted with anti-LIME1 (1:2000). Positive lysates [LY413516] (100ug) and [LC413516] (20ug) can be purchased separately from OriGene.