

## Product datasheet for **CF807637**

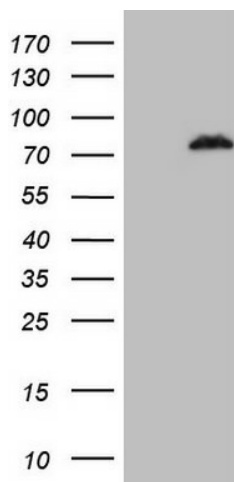
### **POLA2 Mouse Monoclonal Antibody [Clone ID: OTI3G7]**

#### **Product data:**

<b>Product Type:</b>	Primary Antibodies
<b>Clone Name:</b>	OTI3G7
<b>Applications:</b>	WB
<b>Recommended Dilution:</b>	WB 1:2000
<b>Reactivity:</b>	Human
<b>Host:</b>	Mouse
<b>Isotype:</b>	IgG1
<b>Clonality:</b>	Monoclonal
<b>Immunogen:</b>	Human recombinant protein fragment corresponding to amino acids 1-284 of human POLA2(NP_002680) produced in E.coli.
<b>Formulation:</b>	Lyophilized powder (original buffer 1X PBS, pH 7.3, 8% trehalose)
<b>Reconstitution Method:</b>	For reconstitution, we recommend adding 100uL distilled water to a final antibody concentration of about 1 mg/mL. To use this carrier-free antibody for conjugation experiment, we strongly recommend performing another round of desalting process. (OriGene recommends Zeba Spin Desalting Columns, 7KMWCO from Thermo Scientific)
<b>Purification:</b>	Purified from mouse ascites fluids or tissue culture supernatant by affinity chromatography (protein A/G)
<b>Conjugation:</b>	Unconjugated
<b>Storage:</b>	Store at -20°C as received.
<b>Stability:</b>	Stable for 12 months from date of receipt.
<b>Predicted Protein Size:</b>	65.8 kDa
<b>Gene Name:</b>	DNA polymerase alpha 2, accessory subunit
<b>Database Link:</b>	<a href="#">NP_002680</a> <a href="#">Entrez Gene 23649 Human</a> <a href="#">Q14181</a>
<b>Synonyms:</b>	FLJ21662; FLJ37250
<b>Protein Pathways:</b>	DNA replication, Metabolic pathways, Purine metabolism, Pyrimidine metabolism



[View online »](#)

**Product images:**

HEK293T cells were transfected with the pCMV6-ENTRY control (Left lane) or pCMV6-ENTRY POLA2 ([RC201145], Right lane) cDNA for 48 hrs and lysed. Equivalent amounts of cell lysates (5 ug per lane) were separated by SDS-PAGE and immunoblotted with anti-POLA2 (1:2000). Positive lysates [LY419168] (100ug) and [LC419168] (20ug) can be purchased separately from OriGene.