

## Product datasheet for **CF807631**

### **IKBKE Mouse Monoclonal Antibody [Clone ID: OTI1E4]**

#### **Product data:**

<b>Product Type:</b>	Primary Antibodies
<b>Clone Name:</b>	OTI1E4
<b>Applications:</b>	IHC, WB
<b>Recommended Dilution:</b>	WB 1:500, IHC 1:150
<b>Reactivity:</b>	Human
<b>Host:</b>	Mouse
<b>Isotype:</b>	IgG1
<b>Clonality:</b>	Monoclonal
<b>Immunogen:</b>	Human recombinant protein fragment corresponding to amino acids 474-716 of human IKBKE(NP_054721) produced in E.coli.
<b>Formulation:</b>	Lyophilized powder (original buffer 1X PBS, pH 7.3, 8% trehalose)
<b>Reconstitution Method:</b>	For reconstitution, we recommend adding 100uL distilled water to a final antibody concentration of about 1 mg/mL. To use this carrier-free antibody for conjugation experiment, we strongly recommend performing another round of desalting process. (OriGene recommends Zeba Spin Desalting Columns, 7KMWCO from Thermo Scientific)
<b>Purification:</b>	Purified from mouse ascites fluids or tissue culture supernatant by affinity chromatography (protein A/G)
<b>Conjugation:</b>	Unconjugated
<b>Storage:</b>	Store at -20°C as received.
<b>Stability:</b>	Stable for 12 months from date of receipt.
<b>Predicted Protein Size:</b>	80.3 kDa
<b>Gene Name:</b>	inhibitor of nuclear factor kappa B kinase subunit epsilon
<b>Database Link:</b>	<a href="#">NP_054721</a> <a href="#">Entrez Gene 9641 Human</a> <a href="#">Q14164</a>



[View online »](#)

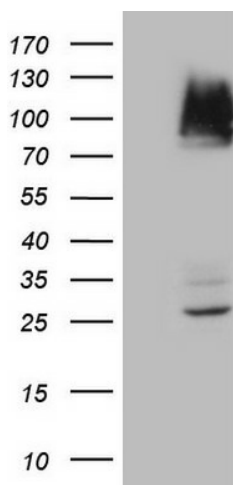
**Background:** IKBKE is a noncanonical I-kappa-B (see MIM 164008) kinase (IKK) that is essential for regulating antiviral signaling pathways. IKBKE has also been identified as a breast cancer (MIM 114480) oncogene and is amplified and overexpressed in over 30% of breast carcinomas and breast cancer cell lines (Hutti et al., 2009 [PubMed 19481526]). [supplied by OMIM, Oct 2009]

**Synonyms:** IKK-E; IKK-i; IKKE; IKKI

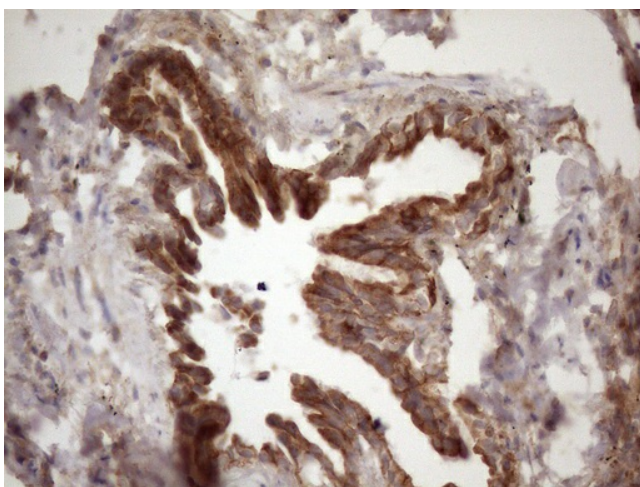
**Protein Families:** Druggable Genome, Protein Kinase

**Protein Pathways:** Cytosolic DNA-sensing pathway, RIG-I-like receptor signaling pathway, Toll-like receptor signaling pathway

### Product images:



HEK293T cells were transfected with the pCMV6-ENTRY control (Left lane) or pCMV6-ENTRY IKBKE ([RC212481], Right lane) cDNA for 48 hrs and lysed. Equivalent amounts of cell lysates (5 ug per lane) were separated by SDS-PAGE and immunoblotted with anti-IKBKE (1:500). Positive lysates [LY415533] (100ug) and [LC415533] (20ug) can be purchased separately from OriGene.



Immunohistochemical staining of paraffin-embedded Human lung tissue within the normal limits using anti-IKBKE mouse monoclonal antibody. Heat-induced epitope retrieval by EDTA solution buffer pH 8.0 at 120°C for 3 min.