

## Product datasheet for **CF807619**

### CDCA8 Mouse Monoclonal Antibody [Clone ID: OTI6A8]

#### Product data:

Product Type:	Primary Antibodies
Clone Name:	OTI6A8
Applications:	WB
Recommended Dilution:	WB 1:2000
Reactivity:	Human
Host:	Mouse
Isotype:	IgG1
Clonality:	Monoclonal
Immunogen:	Full length human recombinant protein of human CDCA8 (NP_060571) produced in E.coli.
Formulation:	Lyophilized powder (original buffer 1X PBS, pH 7.3, 8% trehalose)
Reconstitution Method:	For reconstitution, we recommend adding 100uL distilled water to a final antibody concentration of about 1 mg/mL. To use this carrier-free antibody for conjugation experiment, we strongly recommend performing another round of desalting process. (OriGene recommends Zeba Spin Desalting Columns, 7KMWCO from Thermo Scientific)
Purification:	Purified from mouse ascites fluids or tissue culture supernatant by affinity chromatography (protein A/G)
Conjugation:	Unconjugated
Storage:	Store at -20°C as received.
Stability:	Stable for 12 months from date of receipt.
Predicted Protein Size:	31.1 kDa
Gene Name:	cell division cycle associated 8
Database Link:	<a href="#">NP_060571</a> <a href="#">Entrez Gene 55143 Human</a> <a href="#">Q53HL2</a>



[View online »](#)

**Background:**

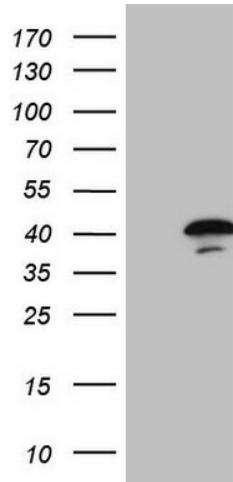
This gene encodes a component of the chromosomal passenger complex. This complex is an essential regulator of mitosis and cell division. This protein is cell-cycle regulated and is required for chromatin-induced microtubule stabilization and spindle formation. Alternate splicing results in multiple transcript variants. Pseudogenes of this gene are found on chromosomes 7, 8 and 16. [provided by RefSeq, Apr 2013]

**Synonyms:**

BOR; BOREALIN; DasraB; MESRGP

**Protein Families:**

Druggable Genome

**Product images:**

HEK293T cells were transfected with the pCMV6-ENTRY control (Left lane) or pCMV6-ENTRY CDCA8 ([RC201385], Right lane) cDNA for 48 hrs and lysed. Equivalent amounts of cell lysates (5 ug per lane) were separated by SDS-PAGE and immunoblotted with anti-CDCA8 (1:2000). Positive lysates [LY402655] (100ug) and [LC402655] (20ug) can be purchased separately from OriGene.