

Product datasheet for **CF807537**

G CSF (CSF3) Mouse Monoclonal Antibody [Clone ID: OTI4H9]

Product data:

Product Type:	Primary Antibodies
Clone Name:	OTI4H9
Applications:	WB
Recommended Dilution:	WB 1:2000
Reactivity:	Human
Host:	Mouse
Isotype:	IgG1
Clonality:	Monoclonal
Immunogen:	Human recombinant protein fragment corresponding to amino acids 30-200 of human CSF3(NP_757374) produced in E.coli.
Formulation:	Lyophilized powder (original buffer 1X PBS, pH 7.3, 8% trehalose)
Reconstitution Method:	For reconstitution, we recommend adding 100uL distilled water to a final antibody concentration of about 1 mg/mL. To use this carrier-free antibody for conjugation experiment, we strongly recommend performing another round of desalting process. (OriGene recommends Zeba Spin Desalting Columns, 7KMWCO from Thermo Scientific)
Purification:	Purified from mouse ascites fluids or tissue culture supernatant by affinity chromatography (protein A/G)
Conjugation:	Unconjugated
Storage:	Store at -20°C as received.
Stability:	Stable for 12 months from date of receipt.
Predicted Protein Size:	21.4 kDa
Gene Name:	colony stimulating factor 3
Database Link:	NP_757374 Entrez Gene 1440 Human P09919
Background:	The protein encoded by this gene is a cytokine that controls the production, differentiation, and function of granulocytes. The active protein is found extracellularly. Alternatively spliced transcript variants have been described for this gene. [provided by RefSeq, May 2010]



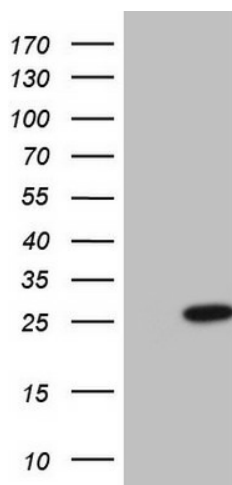
[View online »](#)

Synonyms: C17orf33; CSF3OS; GCSF

Protein Families: Druggable Genome, ES Cell Differentiation/IPS, Secreted Protein

Protein Pathways: Cytokine-cytokine receptor interaction, Hematopoietic cell lineage, Jak-STAT signaling pathway

Product images:



HEK293T cells were transfected with the pCMV6-ENTRY control (Left lane) or pCMV6-ENTRY CSF3 ([RC207709], Right lane) cDNA for 48 hrs and lysed. Equivalent amounts of cell lysates (5 ug per lane) were separated by SDS-PAGE and immunoblotted with anti-CSF3 (1:2000). Positive lysates [LY403533] (100ug) and [LC403533] (20ug) can be purchased separately from OriGene.