

Product datasheet for **CF807357**

Granulin (GRN) Mouse Monoclonal Antibody [Clone ID: OTI2D1]

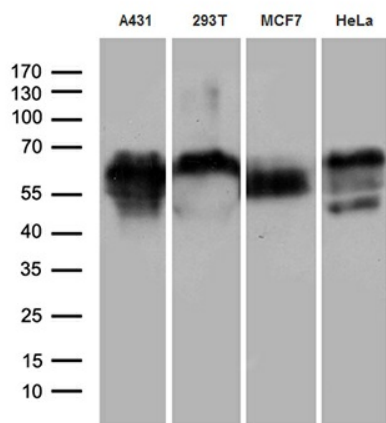
Product data:

Product Type:	Primary Antibodies
Clone Name:	OTI2D1
Applications:	IHC, WB
Recommended Dilution:	WB 1:500, IHC 1:500
Reactivity:	Human
Host:	Mouse
Isotype:	IgG1
Clonality:	Monoclonal
Immunogen:	Human recombinant protein fragment corresponding to amino acids 327-593 of human GRN(NP_002078) produced in E.coli.
Formulation:	Lyophilized powder (original buffer 1X PBS, pH 7.3, 8% trehalose)
Reconstitution Method:	For reconstitution, we recommend adding 100uL distilled water to a final antibody concentration of about 1 mg/mL. To use this carrier-free antibody for conjugation experiment, we strongly recommend performing another round of desalting process. (OriGene recommends Zeba Spin Desalting Columns, 7KMWCO from Thermo Scientific)
Purification:	Purified from mouse ascites fluids or tissue culture supernatant by affinity chromatography (protein A/G)
Conjugation:	Unconjugated
Storage:	Store at -20°C as received.
Stability:	Stable for 12 months from date of receipt.
Predicted Protein Size:	63.54 kDa
Gene Name:	granulin precursor
Database Link:	NP_002078 Entrez Gene 2896 Human P28799
Synonyms:	CLN11; GEP; GP88; PCDGF; PEPI; PGRN
Protein Families:	Druggable Genome, Secreted Protein

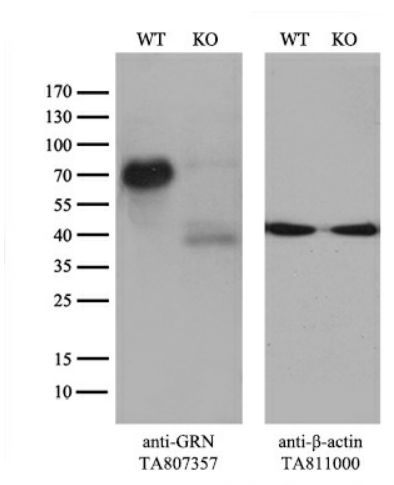


[View online »](#)

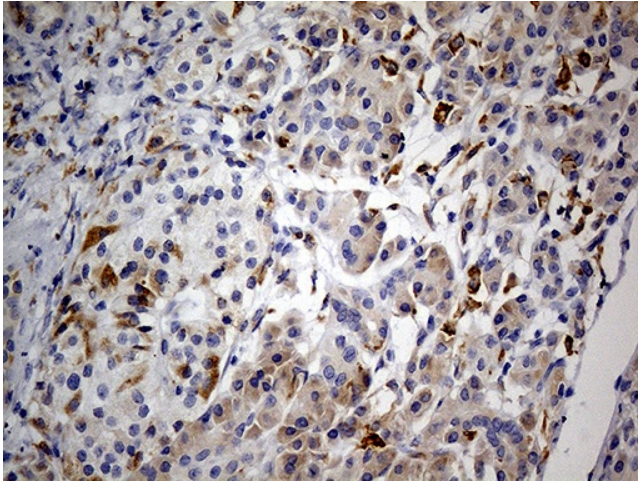
Product images:



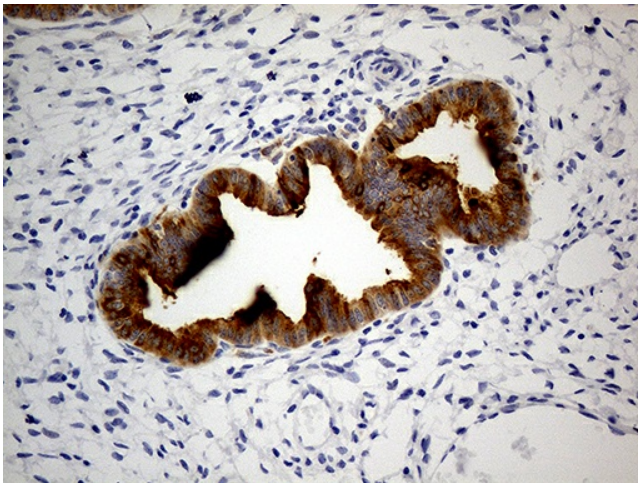
Western blot analysis of extracts (35ug) from 4 different cell lines by using anti-GRN monoclonal antibody (1:500).



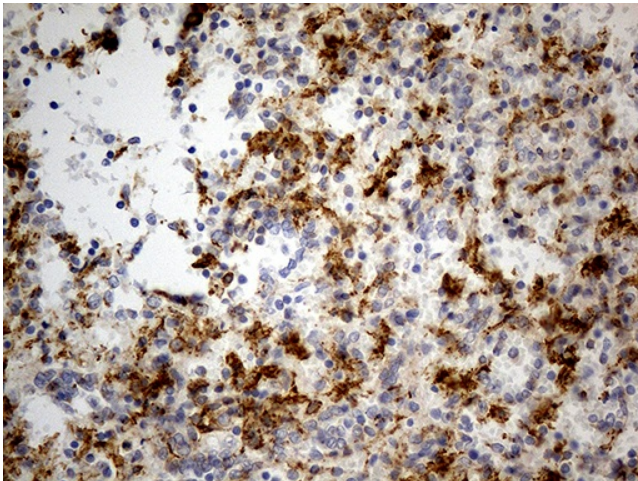
Equivalent amounts of cell lysates (10 ug per lane) of wild-type 293T cells (WT, Cat# LC810293T) and GRN-Knockout 293T cells (KO, Cat# [LC811733]) were separated by SDS-PAGE and immunoblotted with anti-GRN monoclonal antibody [TA807357], (1:100). Then the blotted membrane was stripped and reprobed with anti- β -actin antibody ([TA811000]) as a loading control.



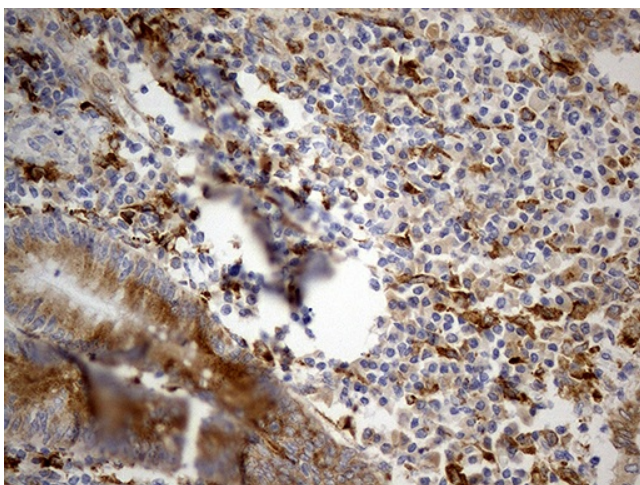
Immunohistochemical staining of paraffin-embedded Human pancreas tissue within the normal limits using anti-GRN mouse monoclonal antibody. (Heat-induced epitope retrieval by 1mM EDTA in 10mM Tris buffer (pH8.5) at 120°C for 3min, [TA807357]) (1:500)



Immunohistochemical staining of paraffin-embedded Human endometrium tissue within the normal limits using anti-GRN mouse monoclonal antibody. (Heat-induced epitope retrieval by 1mM EDTA in 10mM Tris buffer (pH8.5) at 120°C for 3min, [TA807357]) (1:500)



Immunohistochemical staining of paraffin-embedded Human spleen tissue within the normal limits using anti-GRN mouse monoclonal antibody. (Heat-induced epitope retrieval by Tris-EDTA (1:500)



Immunohistochemical staining of paraffin-embedded Human appendix tissue within the normal limits using anti-GRN mouse monoclonal antibody. (Heat-induced epitope retrieval by Tris-EDTA (1:0) (1:500)