

## Product datasheet for **CF807352**

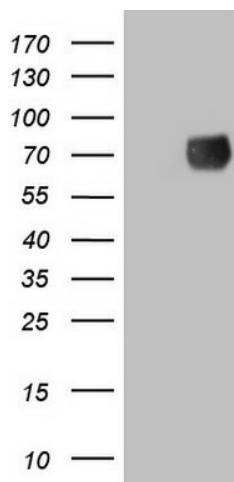
### Granulin (GRN) Mouse Monoclonal Antibody [Clone ID: OTI1F9]

#### Product data:

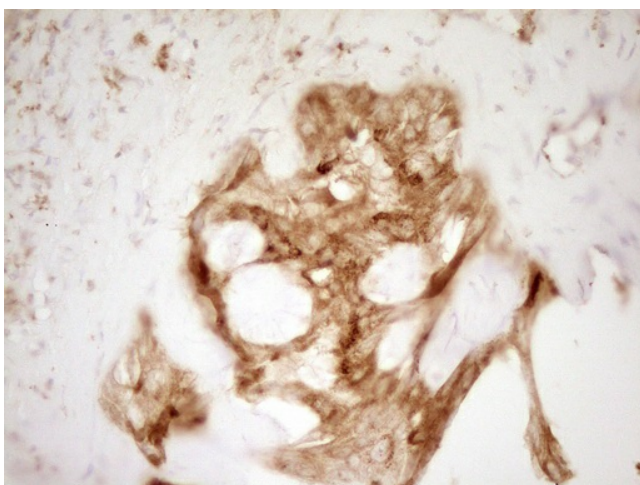
Product Type:	Primary Antibodies
Clone Name:	OTI1F9
Applications:	IHC, WB
Recommended Dilution:	WB 1:2000, IHC 1:150
Reactivity:	Human
Host:	Mouse
Isotype:	IgG1
Clonality:	Monoclonal
Immunogen:	Human recombinant protein fragment corresponding to amino acids 327-593 of human GRN(NP_002078) produced in E.coli.
Formulation:	Lyophilized powder (original buffer 1X PBS, pH 7.3, 8% trehalose)
Reconstitution Method:	For reconstitution, we recommend adding 100uL distilled water to a final antibody concentration of about 1 mg/mL. To use this carrier-free antibody for conjugation experiment, we strongly recommend performing another round of desalting process. (OriGene recommends Zeba Spin Desalting Columns, 7KMWCO from Thermo Scientific)
Purification:	Purified from mouse ascites fluids or tissue culture supernatant by affinity chromatography (protein A/G)
Conjugation:	Unconjugated
Storage:	Store at -20°C as received.
Stability:	Stable for 12 months from date of receipt.
Predicted Protein Size:	61.7 kDa
Gene Name:	granulin precursor
Database Link:	<a href="#">NP_002078</a> <a href="#">Entrez Gene 2896 Human</a> <a href="#">P28799</a>
Synonyms:	CLN11; GEP; GP88; PCDGF; PEPI; PGRN
Protein Families:	Druggable Genome, Secreted Protein



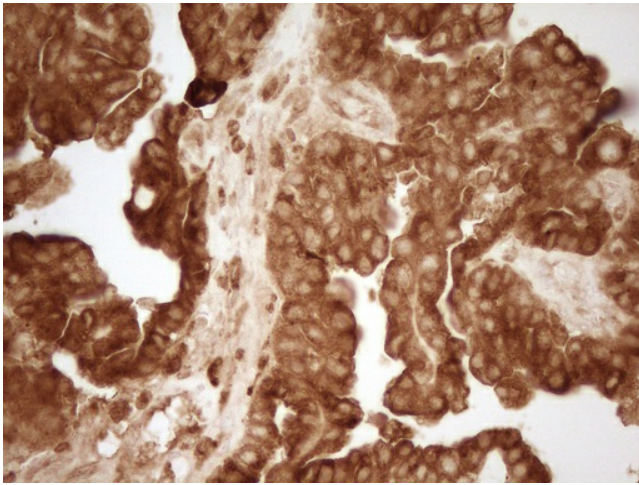
[View online »](#)

**Product images:**

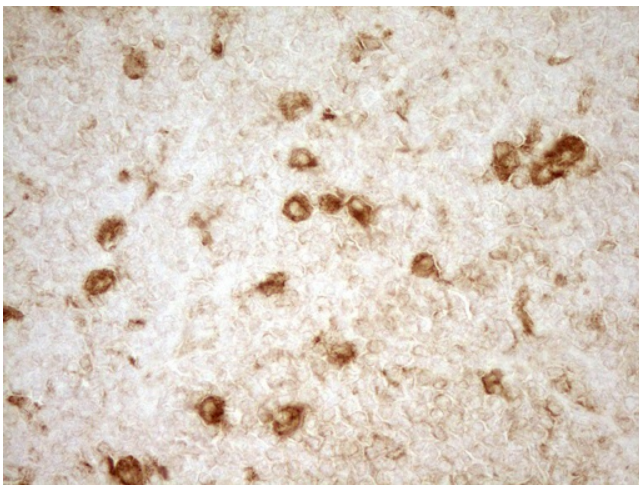
HEK293T cells were transfected with the pCMV6-ENTRY control (Left lane) or pCMV6-ENTRY GRN ([RC202139], Right lane) cDNA for 48 hrs and lysed. Equivalent amounts of cell lysates (5 ug per lane) were separated by SDS-PAGE and immunoblotted with anti-GRN. Positive lysates [LY419545] (100ug) and [LC419545] (20ug) can be purchased separately from OriGene.



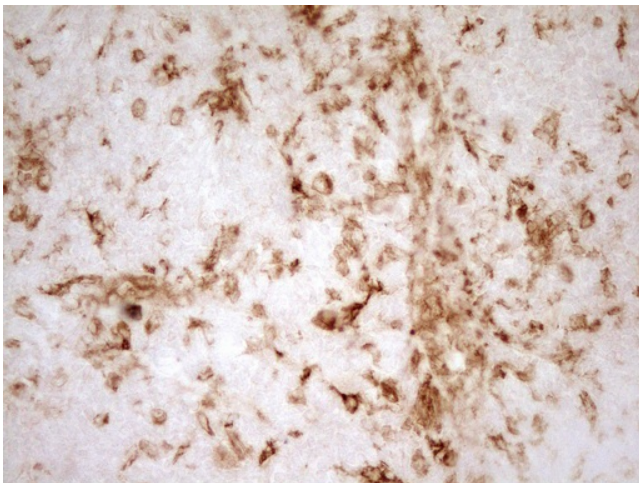
Immunohistochemical staining of paraffin-embedded Carcinoma of Human liver tissue using anti-GRN mouse monoclonal antibody. (Heat-induced epitope retrieval by 1mM EDTA in 10mM Tris, pH8.5, 120°C for 3min, [TA807352])



Immunohistochemical staining of paraffin-embedded Adenocarcinoma of Human ovary tissue using anti-GRN mouse monoclonal antibody. (Heat-induced epitope retrieval by 1mM EDTA in 10mM Tris, pH8.5, 120°C for 3min, [TA807352])



Immunohistochemical staining of paraffin-embedded Human lymphoma tissue using anti-GRN mouse monoclonal antibody. (Heat-induced epitope retrieval by 1mM EDTA in 10mM Tris, pH8.5, 120°C for 3min, [TA807352])



Immunohistochemical staining of paraffin-embedded Human tonsil within the normal limits using anti-GRN mouse monoclonal antibody. (Heat-induced epitope retrieval by 1mM EDTA in 10mM Tris, pH8.5, 120°C for 3min, [TA807352])