

## Product datasheet for **CF807347**

### PR3 (PRTN3) Mouse Monoclonal Antibody [Clone ID: OT15B9]

#### Product data:

Product Type:	Primary Antibodies
Clone Name:	OT15B9
Applications:	WB
Recommended Dilution:	WB 1:2000
Reactivity:	Human
Host:	Mouse
Isotype:	IgG2b
Clonality:	Monoclonal
Immunogen:	Human recombinant protein fragment corresponding to amino acids 28-248 of human PRTN3(NP_002768) produced in E.coli.
Formulation:	Lyophilized powder (original buffer 1X PBS, pH 7.3, 8% trehalose)
Reconstitution Method:	For reconstitution, we recommend adding 100uL distilled water to a final antibody concentration of about 1 mg/mL. To use this carrier-free antibody for conjugation experiment, we strongly recommend performing another round of desalting process. (OriGene recommends Zeba Spin Desalting Columns, 7KMWCO from Thermo Scientific)
Purification:	Purified from mouse ascites fluids or tissue culture supernatant by affinity chromatography (protein A/G)
Conjugation:	Unconjugated
Storage:	Store at -20°C as received.
Stability:	Stable for 12 months from date of receipt.
Predicted Protein Size:	27.6 kDa
Gene Name:	proteinase 3
Database Link:	<a href="#">NP_002768</a> <a href="#">Entrez Gene 5657 Human P24158</a>
Background:	Hydrolysis of proteins, including elastin, by preferential cleavage: -Ala- -Xaa- > -Val- -Xaa-. [UniProtKB/Swiss-Prot Function]

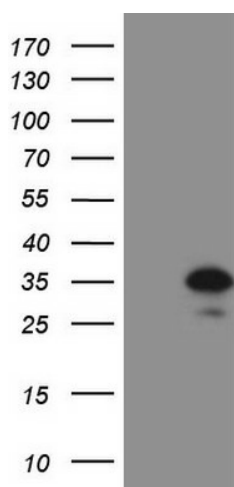


[View online »](#)

**Synonyms:** ACPA; AGP7; C-ANCA; CANCA; MBN; MBT; NP-4; NP4; P29; PR-3; PR3

**Protein Families:** Druggable Genome, Protease

**Product images:**



HEK293T cells were transfected with the pCMV6-ENTRY control (Left lane) or pCMV6-ENTRY PRTN3 ([RC220949], Right lane) cDNA for 48 hrs and lysed. Equivalent amounts of cell lysates (5 ug per lane) were separated by SDS-PAGE and immunoblotted with anti-PRTN3 (1:2000). Positive lysates [LY400985] (100ug) and [LC400985] (20ug) can be purchased separately from OriGene.