

Product datasheet for **CF807331**

PISD Mouse Monoclonal Antibody [Clone ID: OTI2H1]

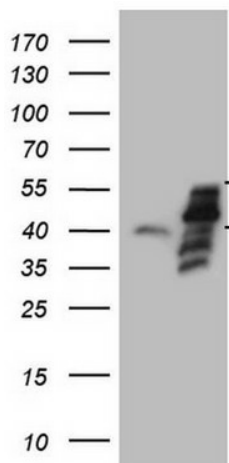
Product data:

Product Type:	Primary Antibodies
Clone Name:	OTI2H1
Applications:	WB
Recommended Dilution:	WB 1:200~2000
Reactivity:	Human, Mouse, Rat
Host:	Mouse
Isotype:	IgG2a
Clonality:	Monoclonal
Immunogen:	Human recombinant protein fragment corresponding to amino acids 80-340 of human PISD(NP_055153) produced in E.coli.
Formulation:	Lyophilized powder (original buffer 1X PBS, pH 7.3, 8% trehalose)
Reconstitution Method:	For reconstitution, we recommend adding 100uL distilled water to a final antibody concentration of about 1 mg/mL. To use this carrier-free antibody for conjugation experiment, we strongly recommend performing another round of desalting process. (OriGene recommends Zeba Spin Desalting Columns, 7KMWCO from Thermo Scientific)
Purification:	Purified from mouse ascites fluids or tissue culture supernatant by affinity chromatography (protein A/G)
Conjugation:	Unconjugated
Storage:	Store at -20°C as received.
Stability:	Stable for 12 months from date of receipt.
Gene Name:	phosphatidylserine decarboxylase
Database Link:	NP_055153 Entrez Gene 320951 Mouse Entrez Gene 681361 Rat Entrez Gene 23761 Human Q9UG56
Synonyms:	DJ858B16; dj858B16.2; PSD; PSDC; PSSC
Protein Pathways:	Glycerophospholipid metabolism, Metabolic pathways

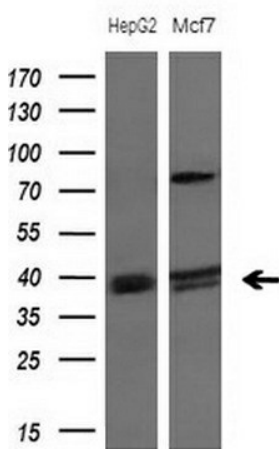


[View online »](#)

Product images:



HEK293T cells were transfected with the pCMV6-ENTRY control (Left lane) or pCMV6-ENTRY PISD ([RC200269], Right lane) cDNA for 48 hrs and lysed. Equivalent amounts of cell lysates (5 ug per lane) were separated by SDS-PAGE and immunoblotted with anti-PISD.



Western blot analysis of extracts (10ug) from 2 different cell lines by using anti-PISD monoclonal antibody at 1:200 dilution.