

Product datasheet for **CF807328**

MALT1 Mouse Monoclonal Antibody [Clone ID: OTI3E10]

Product data:

Product Type:	Primary Antibodies
Clone Name:	OTI3E10
Applications:	IHC
Recommended Dilution:	IHC 1:150
Reactivity:	Human, Mouse, Rat
Host:	Mouse
Isotype:	IgG1
Clonality:	Monoclonal
Immunogen:	Full length human recombinant protein of human MALT1 (NP_006776) produced in HEK293T cell.
Formulation:	Lyophilized powder (original buffer 1X PBS, pH 7.3, 8% trehalose)
Reconstitution Method:	For reconstitution, we recommend adding 100uL distilled water to a final antibody concentration of about 1 mg/mL. To use this carrier-free antibody for conjugation experiment, we strongly recommend performing another round of desalting process. (OriGene recommends Zeba Spin Desalting Columns, 7KMWCO from Thermo Scientific)
Purification:	Purified from mouse ascites fluids or tissue culture supernatant by affinity chromatography (protein A/G)
Conjugation:	Unconjugated
Storage:	Store at -20°C as received.
Stability:	Stable for 12 months from date of receipt.
Predicted Protein Size:	92.1 kDa
Gene Name:	MALT1 paracaspase
Database Link:	NP_006776 Entrez Gene 240354 Mouse Entrez Gene 307366 Rat Entrez Gene 10892 Human Q9UDY8



[View online »](#)

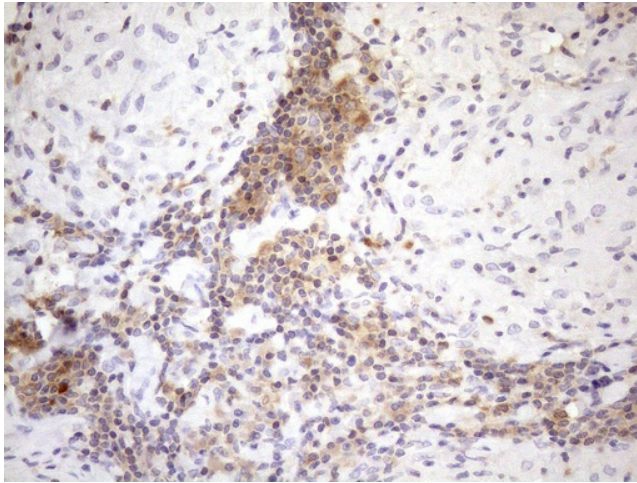
Background: This gene has been found to be recurrently rearranged in chromosomal translocation with two other genes - baculoviral IAP repeat-containing protein 3 (also known as apoptosis inhibitor 2) and immunoglobulin heavy chain locus - in mucosa-associated lymphoid tissue lymphomas. The protein encoded by this gene may play a role in NF-kappaB activation. Two alternatively spliced transcript variants encoding different isoforms have been described for this gene. [provided by RefSeq, Jul 2008]

Synonyms: IMD12; MLT; MLT1

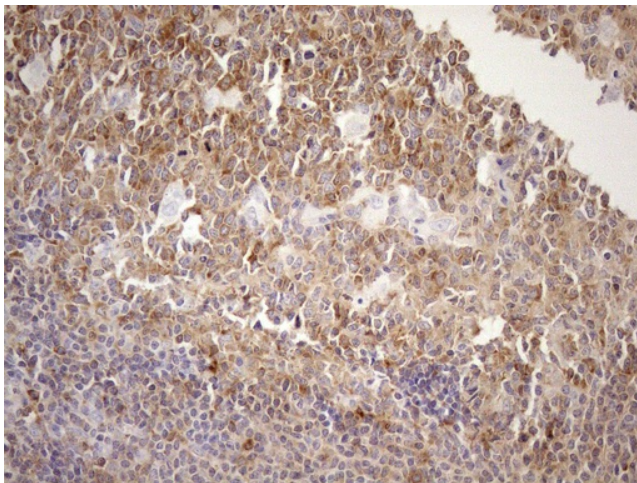
Protein Families: Druggable Genome, Protease

Protein Pathways: B cell receptor signaling pathway, T cell receptor signaling pathway

Product images:



Immunohistochemical staining of paraffin-embedded Human lymph node tissue within the normal limits using anti-MALT1 mouse monoclonal antibody. (Heat-induced epitope retrieval by 1mM EDTA in 10mM Tris buffer (pH8.5) at 120°C for 3min, [TA807328]) (1:150)



Immunohistochemical staining of paraffin-embedded Human tonsil within the normal limits using anti-MALT1 mouse monoclonal antibody. (Heat-induced epitope retrieval by 1mM EDTA in 10mM Tris buffer (pH8.5) at 120°C for 3min, [TA807328]) (1:150)