

Product datasheet for **CF807327**

MALT1 Mouse Monoclonal Antibody [Clone ID: OTI4H10]

Product data:

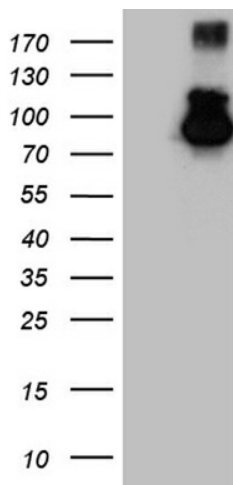
Product Type:	Primary Antibodies
Clone Name:	OTI4H10
Applications:	WB
Recommended Dilution:	WB 1:500~2000
Reactivity:	Human, Mouse, Rat
Host:	Mouse
Isotype:	IgG2a
Clonality:	Monoclonal
Immunogen:	Full length human recombinant protein of human MALT1 (NP_006776) produced in HEK293T cell.
Formulation:	Lyophilized powder (original buffer 1X PBS, pH 7.3, 8% trehalose)
Reconstitution Method:	For reconstitution, we recommend adding 100uL distilled water to a final antibody concentration of about 1 mg/mL. To use this carrier-free antibody for conjugation experiment, we strongly recommend performing another round of desalting process. (OriGene recommends Zeba Spin Desalting Columns, 7KMWCO from Thermo Scientific)
Purification:	Purified from mouse ascites fluids or tissue culture supernatant by affinity chromatography (protein A/G)
Conjugation:	Unconjugated
Storage:	Store at -20°C as received.
Stability:	Stable for 12 months from date of receipt.
Predicted Protein Size:	92.1 kDa
Gene Name:	MALT1 paracaspase
Database Link:	NP_006776 Entrez Gene 240354 Mouse Entrez Gene 307366 Rat Entrez Gene 10892 Human Q9UDY8
Synonyms:	IMD12; MLT; MLT1
Protein Families:	Druggable Genome, Protease



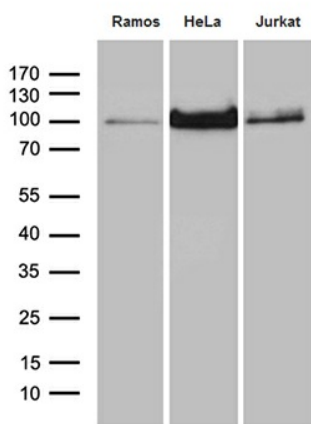
[View online »](#)

Protein Pathways: B cell receptor signaling pathway, T cell receptor signaling pathway

Product images:



HEK293T cells were transfected with the pCMV6-ENTRY control (Left lane) or pCMV6-ENTRY MALT1 ([RC214639], Right lane) cDNA for 48 hrs and lysed. Equivalent amounts of cell lysates (5 ug per lane) were separated by SDS-PAGE and immunoblotted with anti-MALT1 (1:2000). Positive lysates [LY402030] (100ug) and [LC402030] (20ug) can be purchased separately from OriGene.



Western blot analysis of extracts (35ug) from 3 different cell lines by using anti-MALT1 monoclonal antibody (1:500).