

## Product datasheet for **CF807326**

### **MALT1 Mouse Monoclonal Antibody [Clone ID: OTI4C3]**

#### **Product data:**

|                                |  |
|--------------------------------|--|
| <b>Product Type:</b>           | Primary Antibodies   |
| <b>Clone Name:</b>             | OTI4C3   |
| <b>Applications:</b>           | IHC, WB  |
| <b>Recommended Dilution:</b>   | WB 1:2000, IHC 1:150   |
| <b>Reactivity:</b>             | Human, Mouse, Rat  |
| <b>Host:</b>                   | Mouse  |
| <b>Isotype:</b>                | IgG1   |
| <b>Clonality:</b>              | Monoclonal   |
| <b>Immunogen:</b>              | Full length human recombinant protein of human MALT1 (NP_006776) produced in HEK293T cell.   |
| <b>Formulation:</b>            | Lyophilized powder (original buffer 1X PBS, pH 7.3, 8% trehalose)  |
| <b>Reconstitution Method:</b>  | For reconstitution, we recommend adding 100uL distilled water to a final antibody concentration of about 1 mg/mL. To use this carrier-free antibody for conjugation experiment, we strongly recommend performing another round of desalting process. (OriGene recommends Zeba Spin Desalting Columns, 7KMWCO from Thermo Scientific) |
| <b>Purification:</b>           | Purified from mouse ascites fluids or tissue culture supernatant by affinity chromatography (protein A/G)  |
| <b>Conjugation:</b>            | Unconjugated   |
| <b>Storage:</b>                | Store at -20°C as received.  |
| <b>Stability:</b>              | Stable for 12 months from date of receipt.   |
| <b>Predicted Protein Size:</b> | 92.1 kDa   |
| <b>Gene Name:</b>              | MALT1 paracaspase  |
| <b>Database Link:</b>          | <a href="#">NP_006776</a><br><a href="#">Entrez Gene 240354 Mouse</a> <a href="#">Entrez Gene 307366 Rat</a> <a href="#">Entrez Gene 10892 Human</a><br><a href="#">Q9UDY8</a>   |



[View online »](#)

**Background:**

This gene has been found to be recurrently rearranged in chromosomal translocation with two other genes - baculoviral IAP repeat-containing protein 3 (also known as apoptosis inhibitor 2) and immunoglobulin heavy chain locus - in mucosa-associated lymphoid tissue lymphomas. The protein encoded by this gene may play a role in NF-kappaB activation. Two alternatively spliced transcript variants encoding different isoforms have been described for this gene. [provided by RefSeq, Jul 2008]

**Synonyms:**

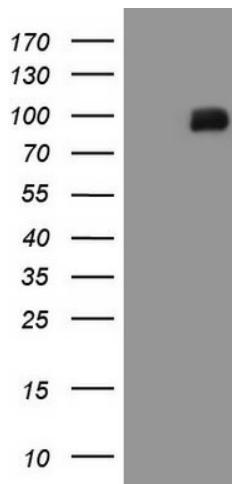
IMD12; MLT; MLT1

**Protein Families:**

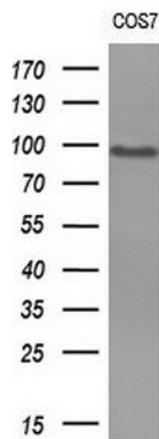
Druggable Genome, Protease

**Protein Pathways:**

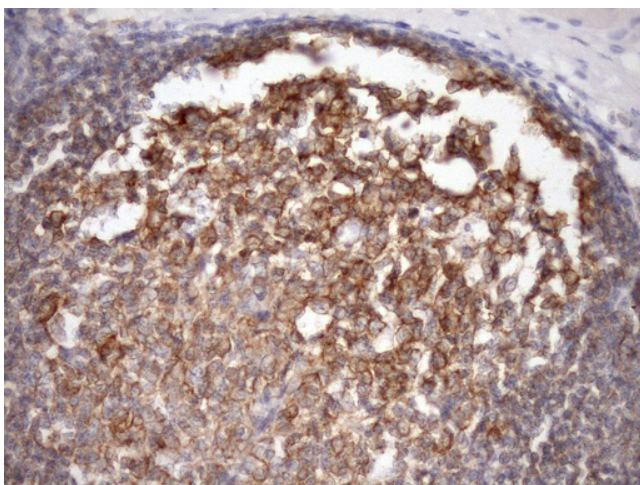
B cell receptor signaling pathway, T cell receptor signaling pathway

**Product images:**


HEK293T cells were transfected with the pCMV6-ENTRY control (Left lane) or pCMV6-ENTRY MALT1 ([RC214639], Right lane) cDNA for 48 hrs and lysed. Equivalent amounts of cell lysates (5 ug per lane) were separated by SDS-PAGE and immunoblotted with anti-MALT1 (1:2000). Positive lysates [LY402030] (100ug) and [LC402030] (20ug) can be purchased separately from OriGene.



Western blot analysis of extracts (10ug) from 1 cell lines by using anti-MALT1 monoclonal antibody (1:200).



Immunohistochemical staining of paraffin-embedded Human tonsil within the normal limits using anti-MALT1 mouse monoclonal antibody. (Heat-induced epitope retrieval by Tris-EDTA, pH8.0, [TA807326]) (1:150)