

Product datasheet for **CF807318**

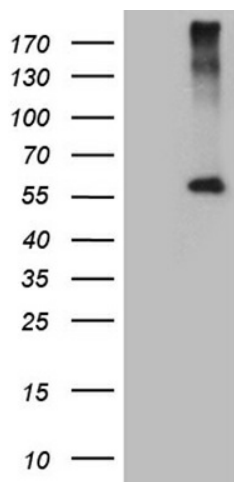
Carboxypeptidase M (CPM) Mouse Monoclonal Antibody [Clone ID: OTI1C10]

Product data:

Product Type:	Primary Antibodies
Clone Name:	OTI1C10
Applications:	WB
Recommended Dilution:	WB 1:2000
Reactivity:	Human, Mouse, Rat
Host:	Mouse
Isotype:	IgG2a
Clonality:	Monoclonal
Immunogen:	Human recombinant protein fragment corresponding to amino acids 124-423 of human CPM(NP_001865) produced in E.coli.
Formulation:	Lyophilized powder (original buffer 1X PBS, pH 7.3, 8% trehalose)
Reconstitution Method:	For reconstitution, we recommend adding 100uL distilled water to a final antibody concentration of about 1 mg/mL. To use this carrier-free antibody for conjugation experiment, we strongly recommend performing another round of desalting process. (OriGene recommends Zeba Spin Desalting Columns, 7KMWCO from Thermo Scientific)
Purification:	Purified from mouse ascites fluids or tissue culture supernatant by affinity chromatography (protein A/G)
Conjugation:	Unconjugated
Storage:	Store at -20°C as received.
Stability:	Stable for 12 months from date of receipt.
Predicted Protein Size:	50.51 kDa
Gene Name:	carboxypeptidase M
Database Link:	NP_001865 Entrez Gene 70574 Mouse Entrez Gene 314855 Rat Entrez Gene 1368 Human P14384
Synonyms:	carboxypeptidase M
Protein Families:	Druggable Genome, Protease



[View online »](#)

Product images:

HEK293T cells were transfected with the pCMV6-ENTRY control (Left lane) or pCMV6-ENTRY CPM ([RC224582], Right lane) cDNA for 48 hrs and lysed. Equivalent amounts of cell lysates (5 ug per lane) were separated by SDS-PAGE and immunoblotted with anti-CPM (1:2000). Positive lysates [LY400704] (100ug) and [LC400704] (20ug) can be purchased separately from OriGene.