

## Product datasheet for **CF807185**

### HGF Mouse Monoclonal Antibody [Clone ID: OTI1C6]

#### Product data:

Product Type:	Primary Antibodies
Clone Name:	OTI1C6
Applications:	WB
Recommended Dilution:	WB 1:2000
Reactivity:	Human, Mouse, Rat
Host:	Mouse
Isotype:	IgG2b
Clonality:	Monoclonal
Immunogen:	Human recombinant protein fragment corresponding to amino acids 200-494 of human HGF(NP_000592) produced in E.coli.
Formulation:	Lyophilized powder (original buffer 1X PBS, pH 7.3, 8% trehalose)
Reconstitution Method:	For reconstitution, we recommend adding 100uL distilled water to a final antibody concentration of about 1 mg/mL. To use this carrier-free antibody for conjugation experiment, we strongly recommend performing another round of desalting process. (OriGene recommends Zeba Spin Desalting Columns, 7KMWCO from Thermo Scientific)
Purification:	Purified from mouse ascites fluids or tissue culture supernatant by affinity chromatography (protein A/G)
Conjugation:	Unconjugated
Storage:	Store at -20°C as received.
Stability:	Stable for 12 months from date of receipt.
Predicted Protein Size:	79.6 kDa
Gene Name:	hepatocyte growth factor
Database Link:	<a href="#">NP_000592</a> <a href="#">Entrez Gene 15234 Mouse</a> <a href="#">Entrez Gene 24446 Rat</a> <a href="#">Entrez Gene 3082 Human</a> <a href="#">P14210</a>

[View online »](#)

**Background:**

Hepatocyte growth factor regulates cell growth, cell motility, and morphogenesis by activating a tyrosine kinase signaling cascade after binding to the proto-oncogenic c-Met receptor. Hepatocyte growth factor is secreted by mesenchymal cells and acts as a multi-functional cytokine on cells of mainly epithelial origin. Its ability to stimulate mitogenesis, cell motility, and matrix invasion gives it a central role in angiogenesis, tumorigenesis, and tissue regeneration. It is secreted as a single inactive polypeptide and is cleaved by serine proteases into a 69-kDa alpha-chain and 34-kDa beta-chain. A disulfide bond between the alpha and beta chains produces the active, heterodimeric molecule. The protein belongs to the plasminogen subfamily of S1 peptidases but has no detectable protease activity. Alternative splicing of this gene produces multiple transcript variants encoding different isoforms. [provided by RefSeq, Jul 2008]

**Synonyms:**

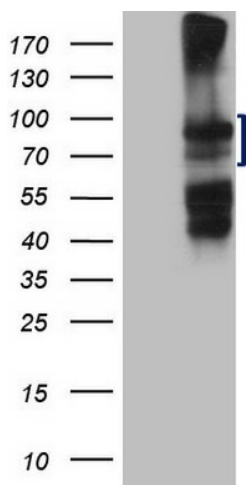
DFNB39; F-TCF; HGFB; HPTA; SF

**Protein Families:**

Adult stem cells, Druggable Genome, ES Cell Differentiation/IPS, Protease, Transmembrane

**Protein Pathways:**

Cytokine-cytokine receptor interaction, Focal adhesion, Melanoma, Pathways in cancer, Renal cell carcinoma

**Product images:**


HEK293T cells were transfected with the pCMV6-ENTRY control (Left lane) or pCMV6-ENTRY HGF ([RC215593], Right lane) cDNA for 48 hrs and lysed. Equivalent amounts of cell lysates (5 ug per lane) were separated by SDS-PAGE and immunoblotted with anti-HGF (1:2000). Positive lysates [LY400200] (100ug) and [LC400200] (20ug) can be purchased separately from OriGene.