

Product datasheet for **CF807179**

Apolipoprotein H (APOH) Mouse Monoclonal Antibody [Clone ID: OTI2C9]

Product data:

Product Type:	Primary Antibodies
Clone Name:	OTI2C9
Applications:	IHC, WB
Recommended Dilution:	WB 1:2000, IHC 1:250
Reactivity:	Human
Host:	Mouse
Isotype:	IgG2b
Clonality:	Monoclonal
Immunogen:	Human recombinant protein fragment corresponding to amino acids 120-345 of human APOH(NP_000033) produced in E.coli.
Formulation:	Lyophilized powder (original buffer 1X PBS, pH 7.3, 8% trehalose)
Reconstitution Method:	For reconstitution, we recommend adding 100uL distilled water to a final antibody concentration of about 1 mg/mL. To use this carrier-free antibody for conjugation experiment, we strongly recommend performing another round of desalting process. (OriGene recommends Zeba Spin Desalting Columns, 7KMWCO from Thermo Scientific)
Purification:	Purified from mouse ascites fluids or tissue culture supernatant by affinity chromatography (protein A/G)
Conjugation:	Unconjugated
Storage:	Store at -20°C as received.
Stability:	Stable for 12 months from date of receipt.
Predicted Protein Size:	36.2 kDa
Gene Name:	apolipoprotein H
Database Link:	NP_000033 Entrez Gene 350 Human P02749



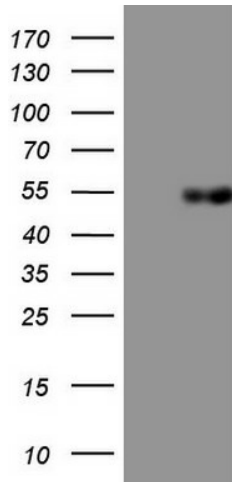
[View online »](#)

Background: Apolipoprotein H has been implicated in a variety of physiologic pathways including lipoprotein metabolism, coagulation, and the production of antiphospholipid autoantibodies. APOH may be a required cofactor for anionic phospholipid binding by the antiphospholipid autoantibodies found in sera of many patients with lupus and primary antiphospholipid syndrome, but it does not seem to be required for the reactivity of antiphospholipid autoantibodies associated with infections. [provided by RefSeq, Jul

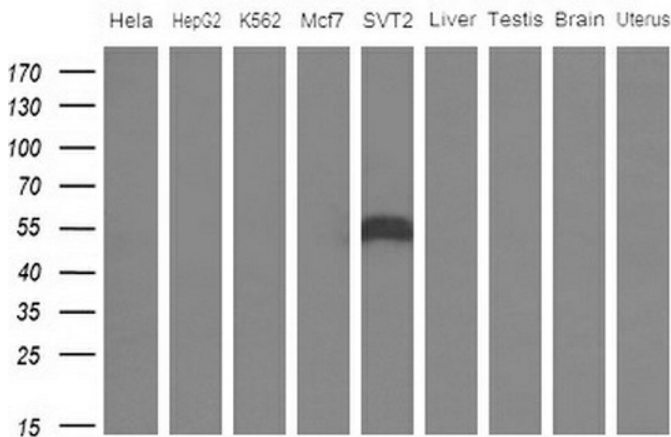
Synonyms: B2G1; B2GP1; BG

Protein Families: Druggable Genome, Secreted Protein

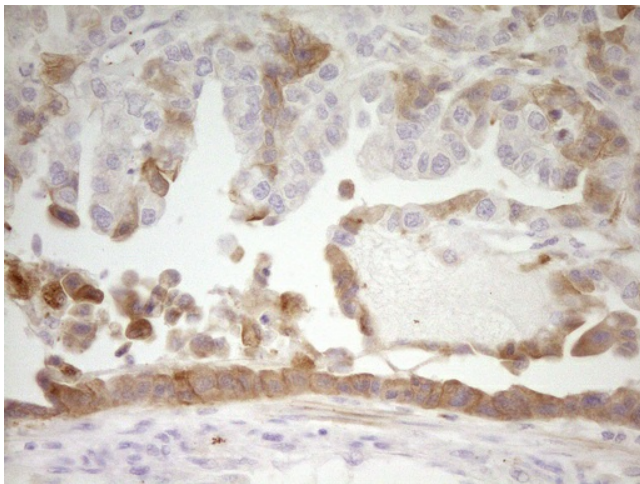
Product images:



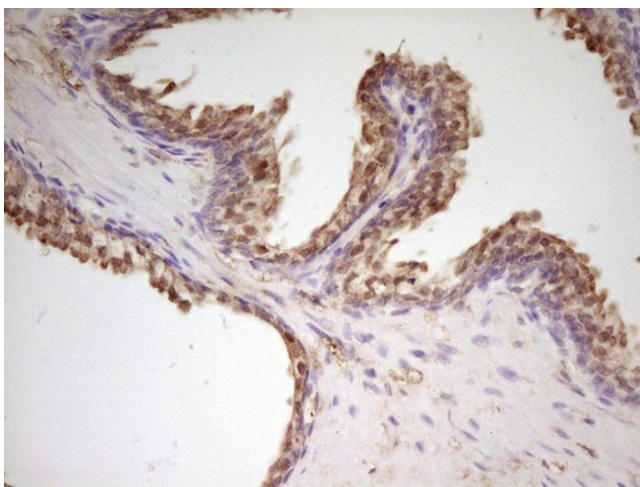
HEK293T cells were transfected with the pCMV6-ENTRY control (Left lane) or pCMV6-ENTRY APOH ([RC205017], Right lane) cDNA for 48 hrs and lysed. Equivalent amounts of cell lysates (5 ug per lane) were separated by SDS-PAGE and immunoblotted with anti-APOH. Positive lysates [LY424960] (100ug) and [LC424960] (20ug) can be purchased separately from OriGene.



Western blot analysis of extracts (10ug) from 5 different cell lines and 4 human tissue by using anti-APOH monoclonal antibody (1: Hela; 2: HepG2; 3: K562; 4: Mcf7; 5: SVT2; 6: Liver; 7: Testis; 8: Brain; 9: Uterus) at 1:200 dilution.



Immunohistochemical staining of paraffin-embedded Adenocarcinoma of Human ovary tissue using anti-APOH mouse monoclonal antibody. Heat-induced epitope retrieval by EDTA solution buffer pH 8.0 at 120°C for 3 min.



Immunohistochemical staining of paraffin-embedded Human prostate tissue within the normal limits using anti-APOH mouse monoclonal antibody. Heat-induced epitope retrieval by EDTA solution buffer pH 8.0 at 120°C for 3 min.