

## Product datasheet for **CF807019**

### Ezrin (EZR) Mouse Monoclonal Antibody [Clone ID: OTI1F3]

#### Product data:

Product Type:	Primary Antibodies
Clone Name:	OTI1F3
Applications:	IF, WB
Recommended Dilution:	WB 1:500, IF 1:100
Reactivity:	Human, Mouse, Rat
Host:	Mouse
Isotype:	IgG2b
Clonality:	Monoclonal
Immunogen:	Full length human recombinant protein of human EZR (NP_003370) produced in HEK293T cell.
Formulation:	Lyophilized powder (original buffer 1X PBS, pH 7.3, 8% trehalose)
Reconstitution Method:	For reconstitution, we recommend adding 100uL distilled water to a final antibody concentration of about 1 mg/mL. To use this carrier-free antibody for conjugation experiment, we strongly recommend performing another round of desalting process. (OriGene recommends Zeba Spin Desalting Columns, 7KMWCO from Thermo Scientific)
Purification:	Purified from mouse ascites fluids or tissue culture supernatant by affinity chromatography (protein A/G)
Conjugation:	Unconjugated
Storage:	Store at -20°C as received.
Stability:	Stable for 12 months from date of receipt.
Predicted Protein Size:	69.2 kDa
Gene Name:	ezrin
Database Link:	<a href="#">NP_003370</a> <a href="#">Entrez Gene 22350 Mouse</a> <a href="#">Entrez Gene 54319 Rat</a> <a href="#">Entrez Gene 7430 Human</a> <a href="#">P15311</a>



[View online »](#)

**Background:**

The cytoplasmic peripheral membrane protein encoded by this gene functions as a protein-tyrosine kinase substrate in microvilli. As a member of the ERM protein family, this protein serves as an intermediate between the plasma membrane and the actin cytoskeleton. This protein plays a key role in cell surface structure adhesion, migration and organization, and it has been implicated in various human cancers. A pseudogene located on chromosome 3 has been identified for this gene. Alternatively spliced variants have also been described for this gene. [provided by RefSeq, Jul 2008]

**Synonyms:**

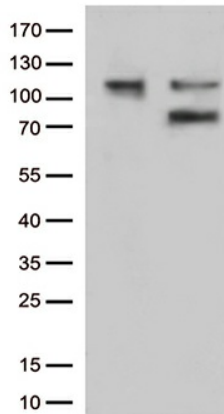
CVIL; CVL; HEL-S-105; VIL2

**Protein Families:**

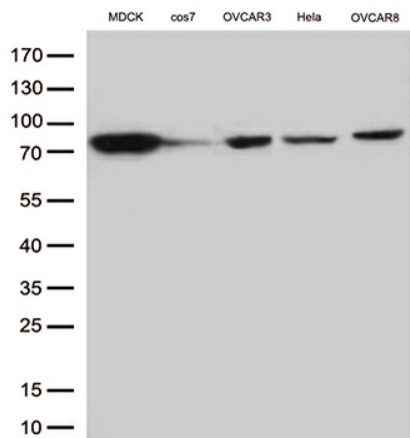
Druggable Genome

**Protein Pathways:**

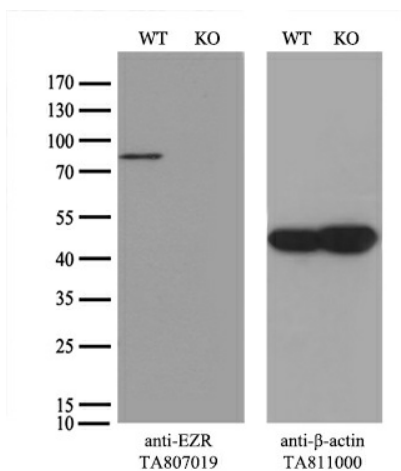
Leukocyte transendothelial migration, Pathogenic Escherichia coli infection, Regulation of actin cytoskeleton

**Product images:**


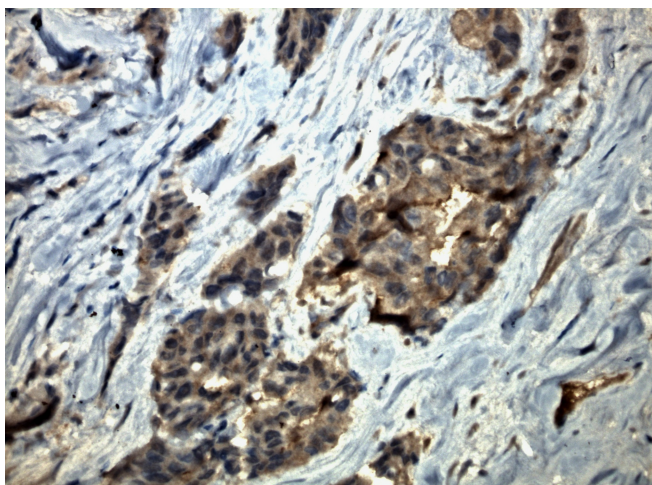
HEK293T cells were transfected with the pCMV6-ENTRY control (Cat# [PS100001], Left lane) or pCMV6-ENTRY EZR (Cat# [RC200404], Right lane) cDNA for 48 hrs and lysed. Equivalent amounts of cell lysates (5 ug per lane) were separated by SDS-PAGE and immunoblotted with anti-EZR (Cat# [TA807019])(1:500). Positive lysates [LY401164] (100ug) and [LC401164] (20ug) can be purchased separately from OriGene.



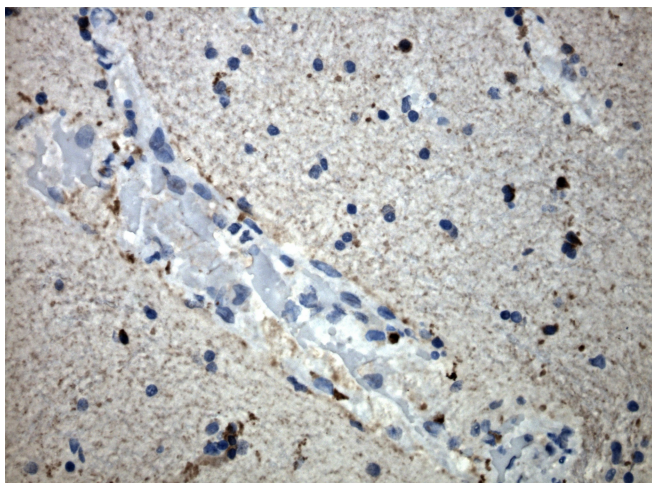
Western blot analysis of extracts (35ug) from 5 cell lines lysates by using anti-EZR monoclonal antibody (1:500).



Equivalent amounts of cell lysates (10 ug per lane) of wild-type HeLa cells (WT, Cat# LC810HELA) and EZR-Knockout HeLa cells (KO, Cat# [LC810256]) were separated by SDS-PAGE and immunoblotted with anti-EZR monoclonal antibody [TA807019] (1:250). Then the blotted membrane was stripped and reprobed with anti-actin antibody as a loading control.

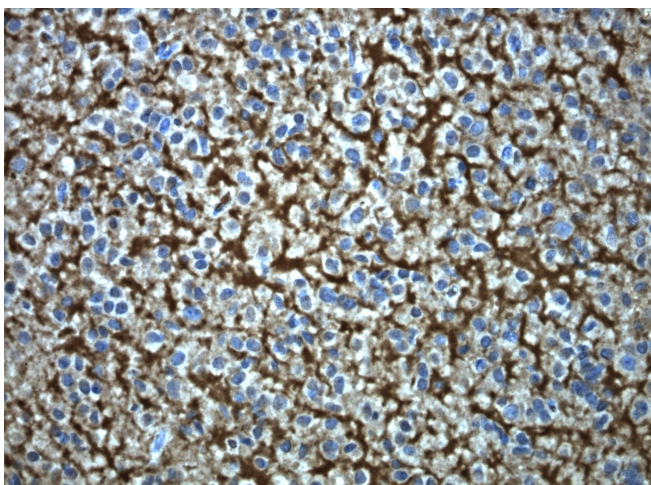


Immunohistochemical staining of paraffin-embedded HER2 positive breast cancer using anti-EZR antibody [TA807019] clone OT11F3 mouse monoclonal antibody. Protocol used HIER TEE pH9.0 (cat# [B21-100]) and anti-EZR at 1:200 dilution. Detection was done with Polink1 Broad Mouse and Rabbit C/N [D11-18] with DAB Kit. Image 40x magnification.

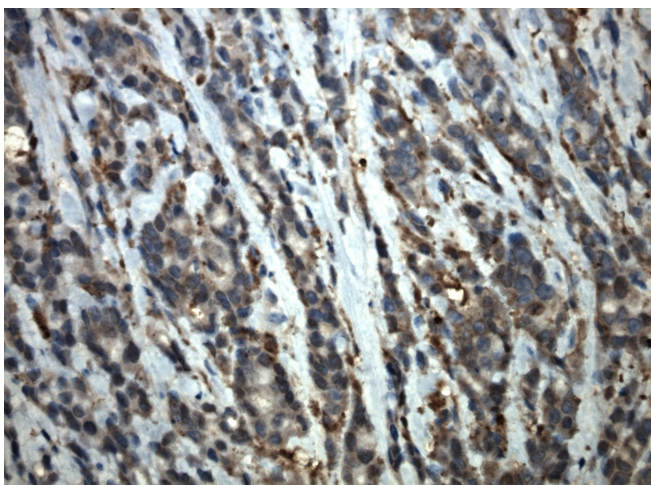


Immunohistochemical staining of paraffin-embedded normal brain using anti-EZR antibody [TA807019] clone OT11F3 mouse monoclonal antibody. Protocol used HIER TEE pH9.0 (cat# [B21-100]) and anti-EZR at 1:200 dilution. Detection was done with Polink1 Broad Mouse and Rabbit C/N [D11-18] with DAB Kit. Image 40x magnification.

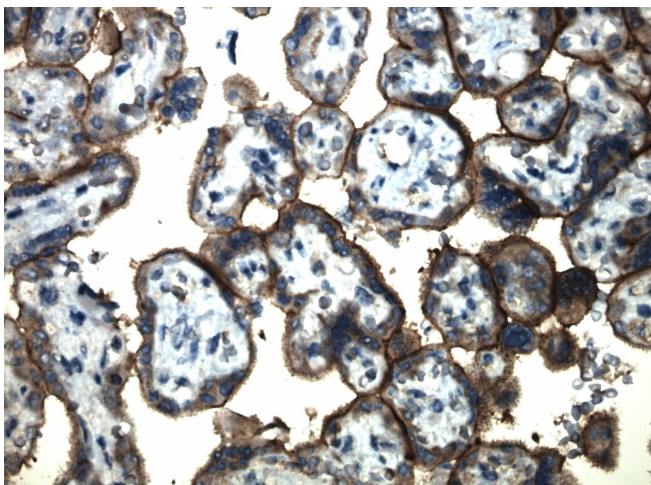




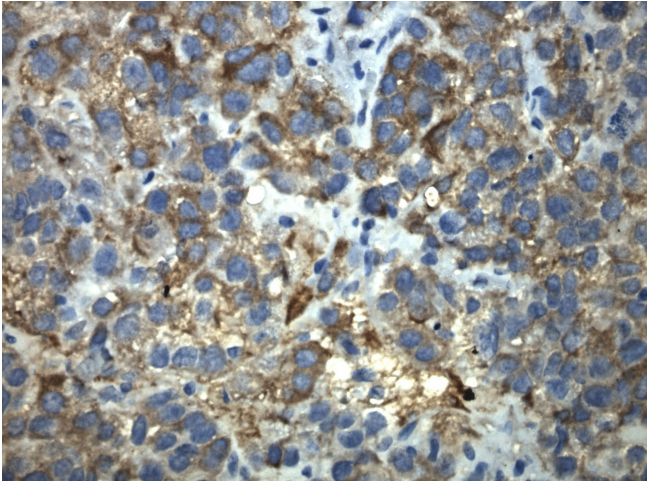
Immunohistochemical staining of paraffin-embedded glioma using anti-EZR antibody [TA807019] clone OT11F3 mouse monoclonal antibody. Protocol used HIER TEE pH9.0 (cat# [B21-100]) and anti-EZR at 1:200 dilution. Detection was done with Polink1 Broad Mouse and Rabbit C/N [D11-18] with DAB Kit. Image 40x magnification.



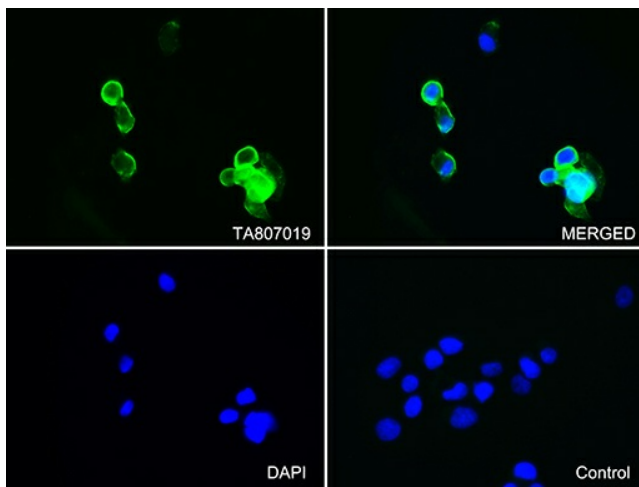
Immunohistochemical staining of paraffin-embedded colon cancer using anti-EZR antibody [TA807019] clone OT11F3 mouse monoclonal antibody. Protocol used HIER TEE pH9.0 (cat# [B21-100]) and anti-EZR at 1:200 dilution. Detection was done with Polink1 Broad Mouse and Rabbit C/N [D11-18] with DAB Kit. Image 40x magnification.



Immunohistochemical staining of paraffin-embedded placenta using anti-EZR antibody [TA807019] clone OT11F3 mouse monoclonal antibody. Protocol used HIER TEE pH9.0 (cat# [B21-100]) and anti-EZR at 1:200 dilution. Detection was done with Polink1 Broad Mouse and Rabbit C/N [D11-18] with DAB Kit. Image 40x magnification.



Immunohistochemical staining of paraffin-embedded endometrial carcinoma using anti-EZR antibody [TA807019] clone OT11F3 mouse monoclonal antibody. Protocol used HIER TEE pH9.0 (cat# [B21-100]) and anti-EZR at 1:200 dilution. Detection was done with Polink1 Broad Mouse and Rabbit C/N [D11-18] with DAB Kit. Image 40x magnification.



Immunofluorescent staining of OVCAR3 cells using anti-EZR mouse monoclonal antibody ([TA807019], green, upper left; merged, upper right) or Isotype control (merged, lower right). Cell nuclei were stained with DAPI (blue, lower left) (1:100).