

## Product datasheet for **CF806910**

### FLT4 Mouse Monoclonal Antibody [Clone ID: OTI9G6]

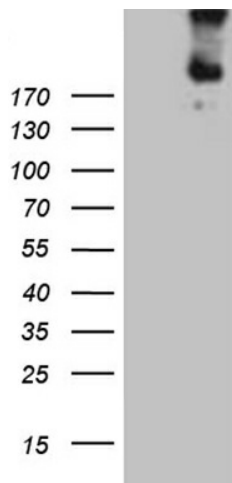
#### Product data:

Product Type:	Primary Antibodies
Clone Name:	OTI9G6
Applications:	WB
Recommended Dilution:	WB 1:2000
Reactivity:	Human, Mouse, Rat
Host:	Mouse
Isotype:	IgG1
Clonality:	Monoclonal
Immunogen:	Human recombinant protein fragment corresponding to amino acids 1063-1363 of human FLT4(NP_891555) produced in E.coli.
Formulation:	Lyophilized powder (original buffer 1X PBS, pH 7.3, 8% trehalose)
Reconstitution Method:	For reconstitution, we recommend adding 100uL distilled water to a final antibody concentration of about 1 mg/mL. To use this carrier-free antibody for conjugation experiment, we strongly recommend performing another round of desalting process. (OriGene recommends Zeba Spin Desalting Columns, 7KMWCO from Thermo Scientific)
Purification:	Purified from mouse ascites fluids or tissue culture supernatant by affinity chromatography (protein A/G)
Conjugation:	Unconjugated
Storage:	Store at -20°C as received.
Stability:	Stable for 12 months from date of receipt.
Predicted Protein Size:	150.2 kDa
Gene Name:	fms related receptor tyrosine kinase 4
Database Link:	<a href="#">NP_891555</a> <a href="#">Entrez Gene 14257 Mouse</a> <a href="#">Entrez Gene 114110 Rat</a> <a href="#">Entrez Gene 2324 Human</a> <a href="#">P35916</a>
Synonyms:	FLT-4; FLT41; LMPH1A; PCL; VEGFR-3; VEGFR3
Protein Families:	Druggable Genome, Protein Kinase, Transmembrane


[View online »](#)

**Protein Pathways:** Cytokine-cytokine receptor interaction, Focal adhesion

**Product images:**



HEK293T cells were transfected with the pCMV6-ENTRY control (Left lane) or pCMV6-ENTRY FLT4 ([RC214285], Right lane) cDNA for 48 hrs and lysed. Equivalent amounts of cell lysates (5 ug per lane) were separated by SDS-PAGE and immunoblotted with anti-FLT4 (1:2000). Positive lysates [LY405313] (100ug) and [LC405313] (20ug) can be purchased separately from OriGene.