

Product datasheet for **CF806811**

PD1 (PDCD1) Mouse Monoclonal Antibody [Clone ID: OTI11B2]

Product data:

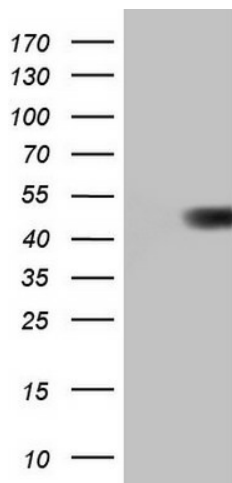
Product Type:	Primary Antibodies
Clone Name:	OTI11B2
Applications:	FC, IF, IHC, WB
Recommended Dilution:	WB 1:2000, IHC 1:150, IF 1:100~900, FLOW 1:50
Reactivity:	Human
Host:	Mouse
Isotype:	IgG2a
Clonality:	Monoclonal
Immunogen:	Full length human recombinant protein of human PDCD1 (NP_005009) produced in HEK293T cell.
Formulation:	Lyophilized powder (original buffer 1X PBS, pH 7.3, 8% trehalose)
Reconstitution Method:	For reconstitution, we recommend adding 100uL distilled water to a final antibody concentration of about 1 mg/mL. To use this carrier-free antibody for conjugation experiment, we strongly recommend performing another round of desalting process. (OriGene recommends Zeba Spin Desalting Columns, 7KMWCO from Thermo Scientific)
Purification:	Purified from mouse ascites fluids or tissue culture supernatant by affinity chromatography (protein A/G)
Conjugation:	Unconjugated
Storage:	Store at -20°C as received.
Stability:	Stable for 12 months from date of receipt.
Predicted Protein Size:	29.2 kDa
Gene Name:	programmed cell death 1
Database Link:	NP_005009 Entrez Gene 5133 Human Q15116
Synonyms:	CD279; hPD-1; hPD-I; hSLE1; PD-1; PD1; SLEB2
Protein Families:	Druggable Genome, Transmembrane



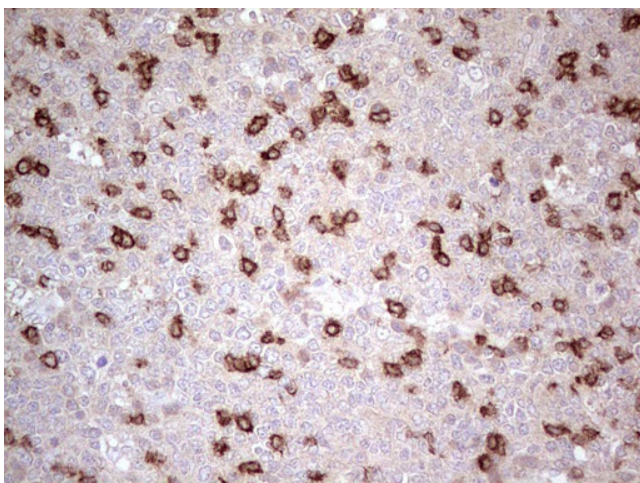
[View online »](#)

Protein Pathways: Cell adhesion molecules (CAMs), T cell receptor signaling pathway

Product images:



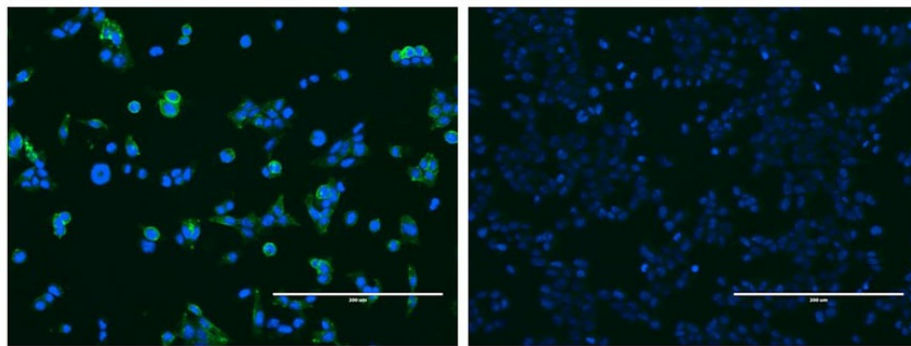
HEK293T cells were transfected with the pCMV6-ENTRY control (Left lane) or pCMV6-ENTRY PDCD1 ([RC210364], Right lane) cDNA for 48 hrs and lysed. Equivalent amounts of cell lysates (5 ug per lane) were separated by SDS-PAGE and immunoblotted with anti-PDCD1. Positive lysates [LY401555] (100ug) and [LC401555] (20ug) can be purchased separately from OriGene.



Immunohistochemical staining of paraffin-embedded Human tonsil using anti-PDCD1 mouse monoclonal antibody. (Heat-induced epitope retrieval by Tris-EDTA, pH8.0, [TA806811])

PD1 cell line

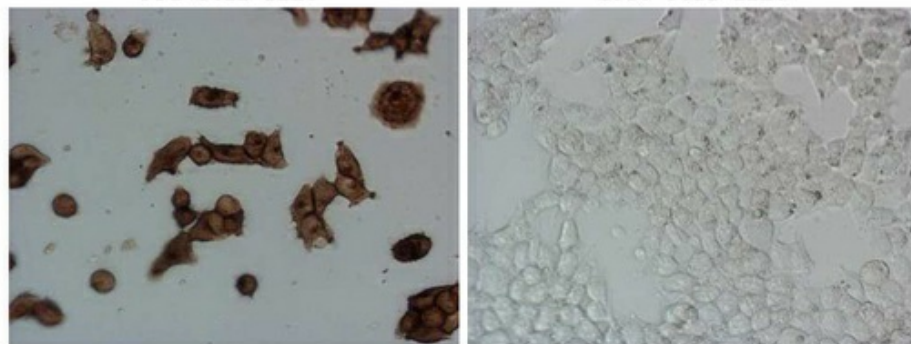
293T cell line



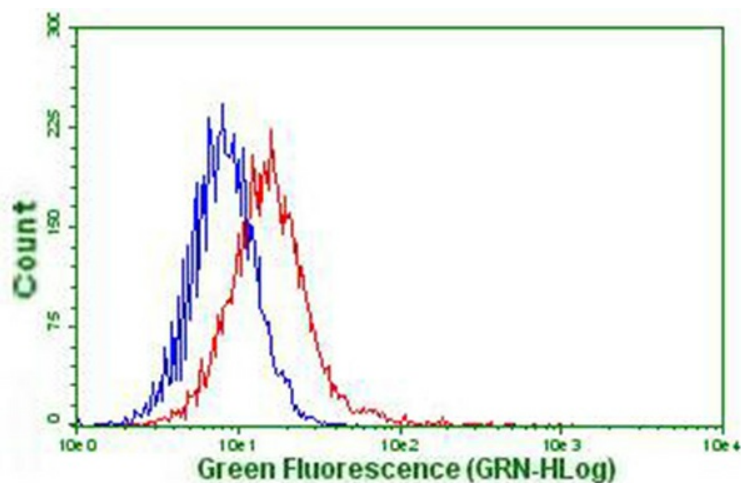
Immunofluorescent staining of PDCD1 ([RC210364])-stable-transfected HEK293T cells (left) labeling PDCD1 with mouse monoclonal antibody [TA806811] (green) and nucleus with Hoechst33342 (blue). HEK293T cells serve as negative control (right) (1:100).

PD1 cell line

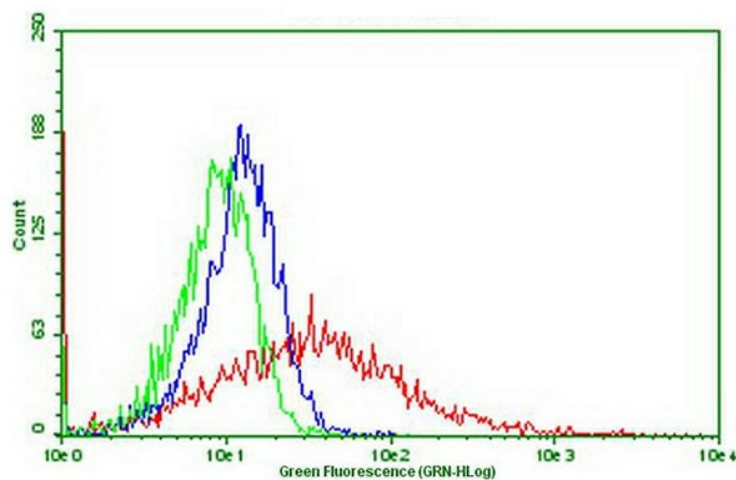
293T cell line



Immunocytochemistry staining of stable expression PD1 cells using anti-PDCD1 mouse monoclonal antibody ([TA806811]) (Left). The right is negative control. (1:100) (1:900)



Flow cytometric Analysis of stable expression PD1 cells using anti-PDCD1 antibody ([TA806811]) (Red) compared to a nonspecific negative control antibody (Blue) (1:50).



HEK293T cells transfected with either mouse PD1 ([MR227347]) overexpress plasmid (Red) or empty vector control plasmid (Blue) were immunostained by anti-PDCD1 antibody ([TA806811]), compared to a nonspecific negative control antibody (green), and then analyzed by flow cytometry (1:50).