

Product datasheet for **CF806807**

PD1 (PDCD1) Mouse Monoclonal Antibody [Clone ID: OTI3C6]

Product data:

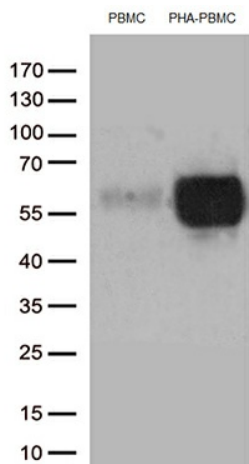
Product Type:	Primary Antibodies
Clone Name:	OTI3C6
Applications:	FC, IHC, WB
Recommended Dilution:	IHC 1:150, FLOW 1:50
Reactivity:	Human
Host:	Mouse
Isotype:	IgG2a
Clonality:	Monoclonal
Immunogen:	Full length human recombinant protein of human PDCD1 (NP_005009) produced in HEK293T cell.
Formulation:	Lyophilized powder (original buffer 1X PBS, pH 7.3, 8% trehalose)
Reconstitution Method:	For reconstitution, we recommend adding 100uL distilled water to a final antibody concentration of about 1 mg/mL. To use this carrier-free antibody for conjugation experiment, we strongly recommend performing another round of desalting process. (OriGene recommends Zeba Spin Desalting Columns, 7KMWCO from Thermo Scientific)
Purification:	Purified from mouse ascites fluids or tissue culture supernatant by affinity chromatography (protein A/G)
Conjugation:	Unconjugated
Storage:	Store at -20°C as received.
Stability:	Stable for 12 months from date of receipt.
Predicted Protein Size:	29.2 kDa
Gene Name:	programmed cell death 1
Database Link:	NP_005009 Entrez Gene 5133 Human Q15116
Synonyms:	CD279; hPD-1; hPD-I; hSLE1; PD-1; PD1; SLEB2
Protein Families:	Druggable Genome, Transmembrane



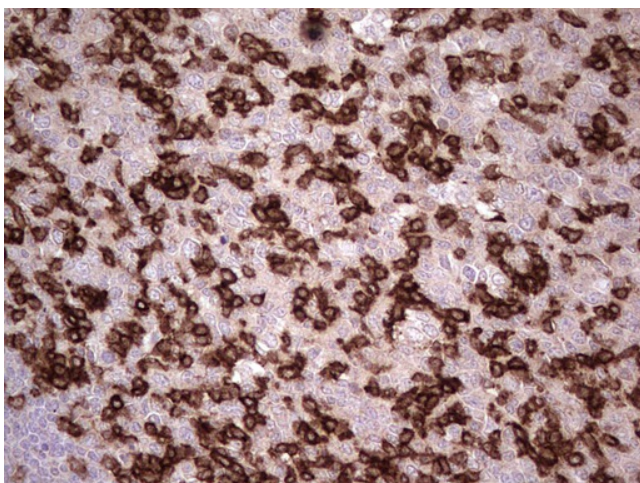
[View online »](#)

Protein Pathways: Cell adhesion molecules (CAMs), T cell receptor signaling pathway

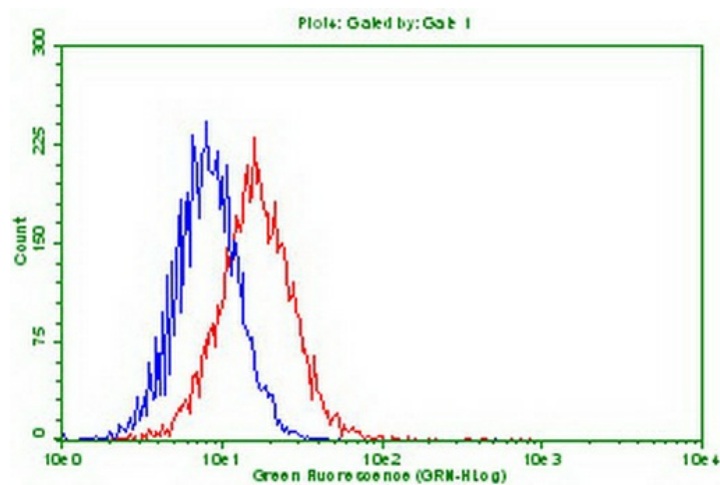
Product images:



Western blot analysis of extracts (35ug) from PBMCs and PHA-stimulated-PBMCs by using anti-PDCD1 monoclonal antibody (1:250).



Immunohistochemical staining of paraffin-embedded Human tonsil using anti-PDCD1 mouse monoclonal antibody. Heat-induced epitope retrieval by EDTA solution buffer pH 8.0 at 120°C for 3 min.



Flow cytometric Analysis of stable expression PD1 cells using anti-PDCD1 antibody ([TA806807]) (Red) compared to a nonspecific negative control antibody (Blue). (1:100) (1:50)