

## Product datasheet for **CF806797**

### CCN2 Mouse Monoclonal Antibody [Clone ID: OTI2C9]

#### Product data:

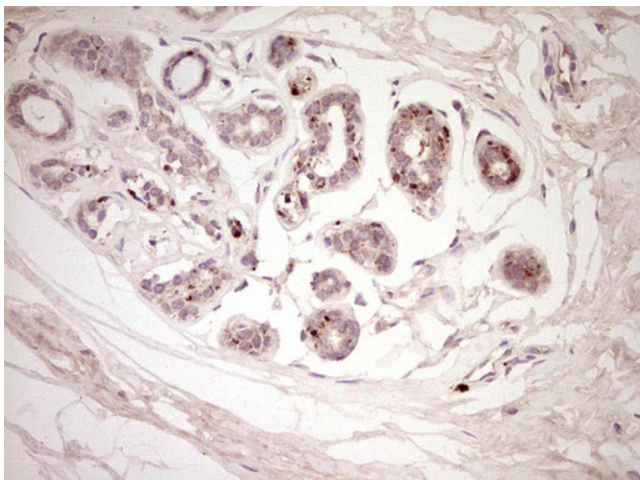
Product Type:	Primary Antibodies
Clone Name:	OTI2C9
Applications:	IHC
Recommend Dilution:	IHC 1:150
Reactivity:	Human
Host:	Mouse
Isotype:	IgG1
Clonality:	Monoclonal
Immunogen:	Human recombinant protein fragment corresponding to amino acids 27-349 of human CTGF(NP_001892) produced in E.coli.
Formulation:	Lyophilized powder (original buffer 1X PBS, pH 7.3, 8% trehalose)
Reconstitution Method:	For reconstitution, we recommend adding 100uL distilled water to a final antibody concentration of about 1 mg/mL. To use this carrier-free antibody for conjugation experiment, we strongly recommend performing another round of desalting process. (OriGene recommends Zeba Spin Desalting Columns, 7KMWCO from Thermo Scientific)
Purification:	Purified from mouse ascites fluids or tissue culture supernatant by affinity chromatography (protein A/G)
Storage:	Store at -20°C as received.
Stability:	Stable for 12 months from date of receipt.
Predicted Protein Size:	37.9 kDa
Gene Name:	Homo sapiens cellular communication network factor 2 (CCN2), mRNA.
Database Link:	<a href="#">NP_001892 Entrez Gene 1490 Human</a>
Background:	The protein encoded by this gene is a mitogen that is secreted by vascular endothelial cells. The encoded protein plays a role in chondrocyte proliferation and differentiation, cell adhesion in many cell types, and is related to platelet-derived growth factor. Certain polymorphisms in this gene have been linked with a higher incidence of systemic sclerosis. [provided by RefSeq, Nov 2009]
Synonyms:	CCN2; HCS24; IGFBP8; NOV2



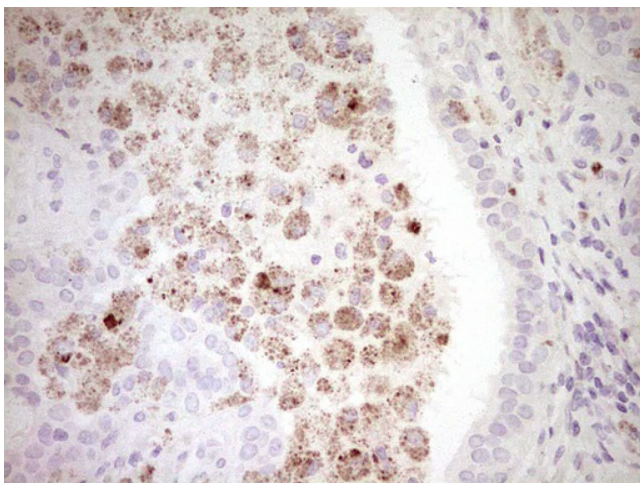
[View online »](#)

Protein Families: Druggable Genome, Secreted Protein

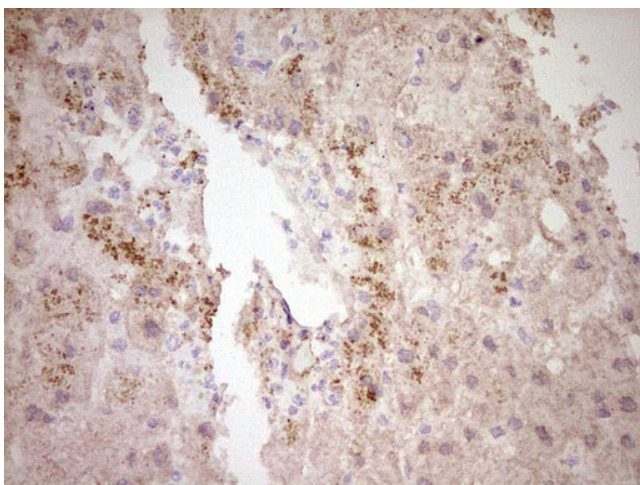
### Product images:



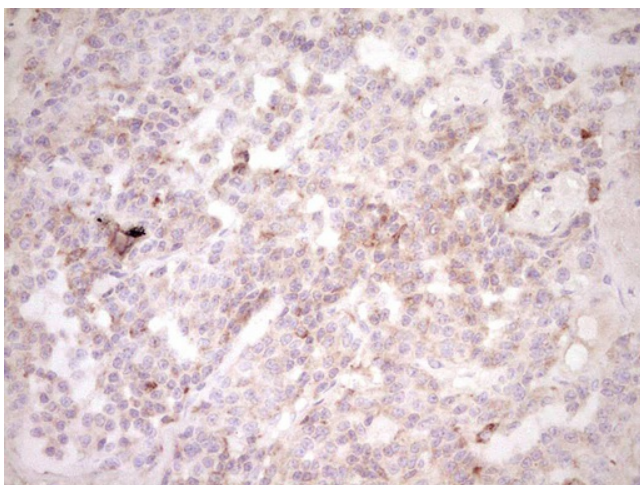
Immunohistochemical staining of paraffin-embedded Human breast tissue within the normal limits using anti-CTGF mouse monoclonal antibody. (Heat-induced epitope retrieval by 1 mM EDTA in 10mM Tris, pH8.5, 120°C for 3min, [TA806797])



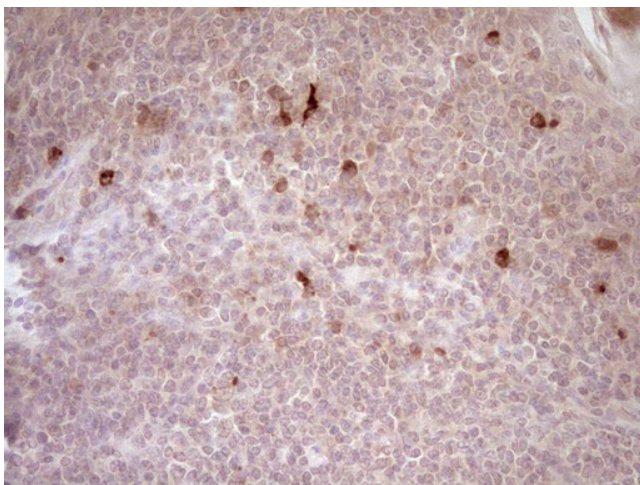
Immunohistochemical staining of paraffin-embedded Adenocarcinoma of Human breast tissue using anti-CTGF mouse monoclonal antibody. (Heat-induced epitope retrieval by 1 mM EDTA in 10mM Tris, pH8.5, 120°C for 3min, [TA806797])



Immunohistochemical staining of paraffin-embedded Human liver tissue within the normal limits using anti-CTGF mouse monoclonal antibody. (Heat-induced epitope retrieval by 1 mM EDTA in 10mM Tris, pH8.5, 120°C for 3min, [TA806797])



Immunohistochemical staining of paraffin-embedded Carcinoma of Human lung tissue using anti-CTGF mouse monoclonal antibody. (Heat-induced epitope retrieval by 1 mM EDTA in 10mM Tris, pH8.5, 120°C for 3min, [TA806797])



Immunohistochemical staining of paraffin-embedded Human tonsil within the normal limits using anti-CTGF mouse monoclonal antibody. (Heat-induced epitope retrieval by 1 mM EDTA in 10mM Tris, pH8.5, 120°C for 3min, [TA806797])